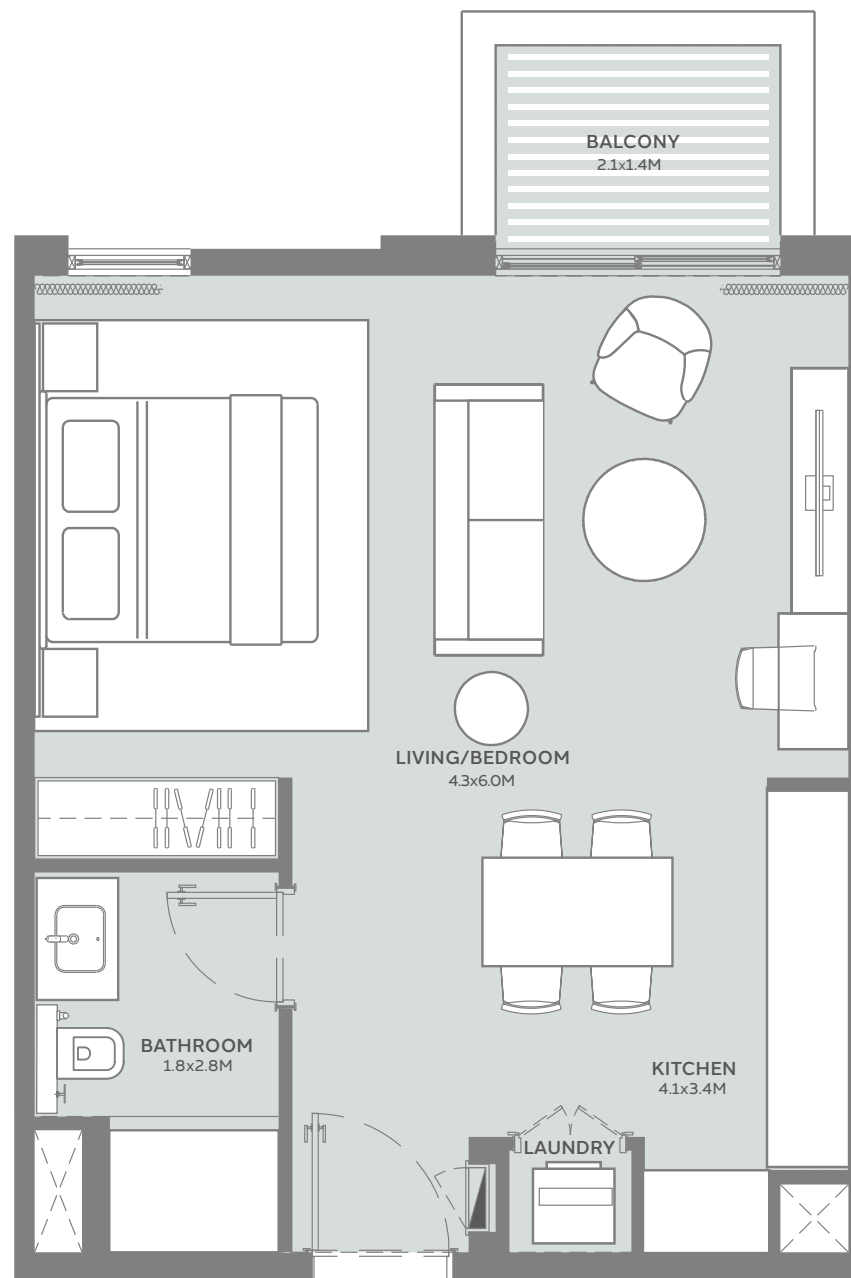
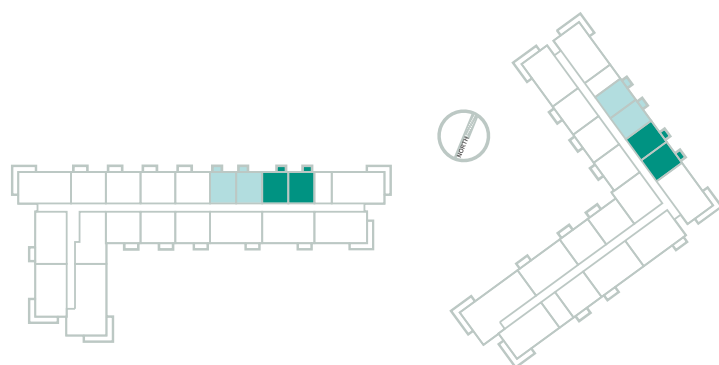


MARASSI TERRACES

STUDIO TYPE 01

SUITE AREA	43.22 sqm
BALCONY AREA	3.57 sqm
TOTAL AREA	46.79sqm



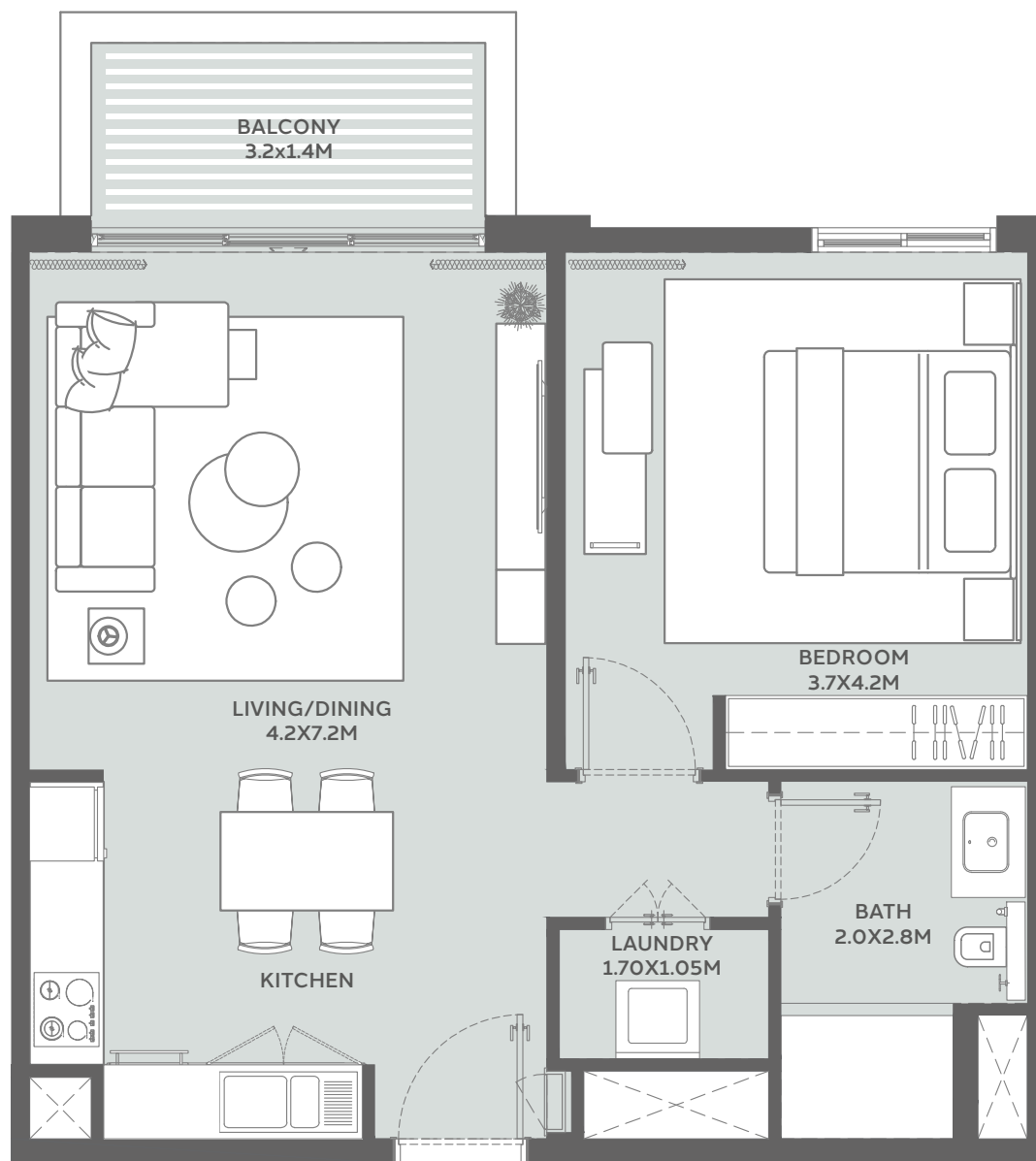
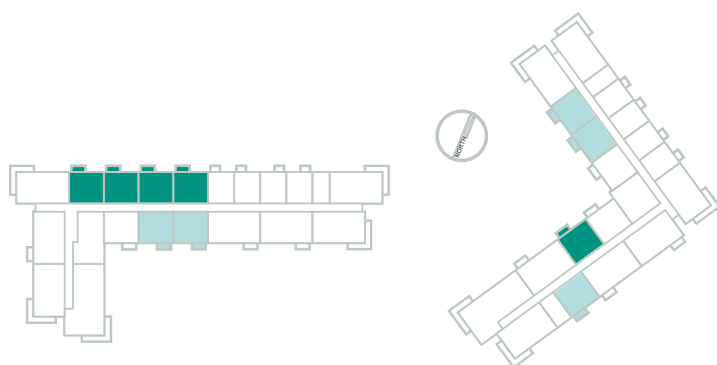
■ Displayed Floor Plan
■ Mirrored Floor Plan

Disclaimer: 1. All room dimensions are measured to structural elements and exclude all finishes and construction tolerances. 2. All materials, dimensions, symbols, and characters indicated on the plans are indicative. 3. The attached plans are for marketing purposes only. Actual suite area may vary from the stated area. Drawings not to scale. The developer reserves the right to make revisions. 4. The areas specified in this unit plan have been calculated based on Bahrain Property Measurement system (BPMS), in general as per the following standards: Inside face of all bounding walls, all centerline of any party walls to adjoining units, excluding the ducts and shafts containing shared building services (refers to Sales and Purchase Agreement). 5. The Unit Site Plan has been prepared for the purpose of identifying the areas of the Unit calculated in accordance with the methodology in note (5). These areas may or may not correspond with any methodologies adopted by the relevant authorities. 6. The units are measured at typical floor in the building. Columns may vary in size depending on the floor level.

MARASSI TERRACES

ONE BEDROOM TYPE 01

SUITE AREA	57.97 sqm
BALCONY AREA	5.44 sqm
TOTAL AREA	63.41 sqm



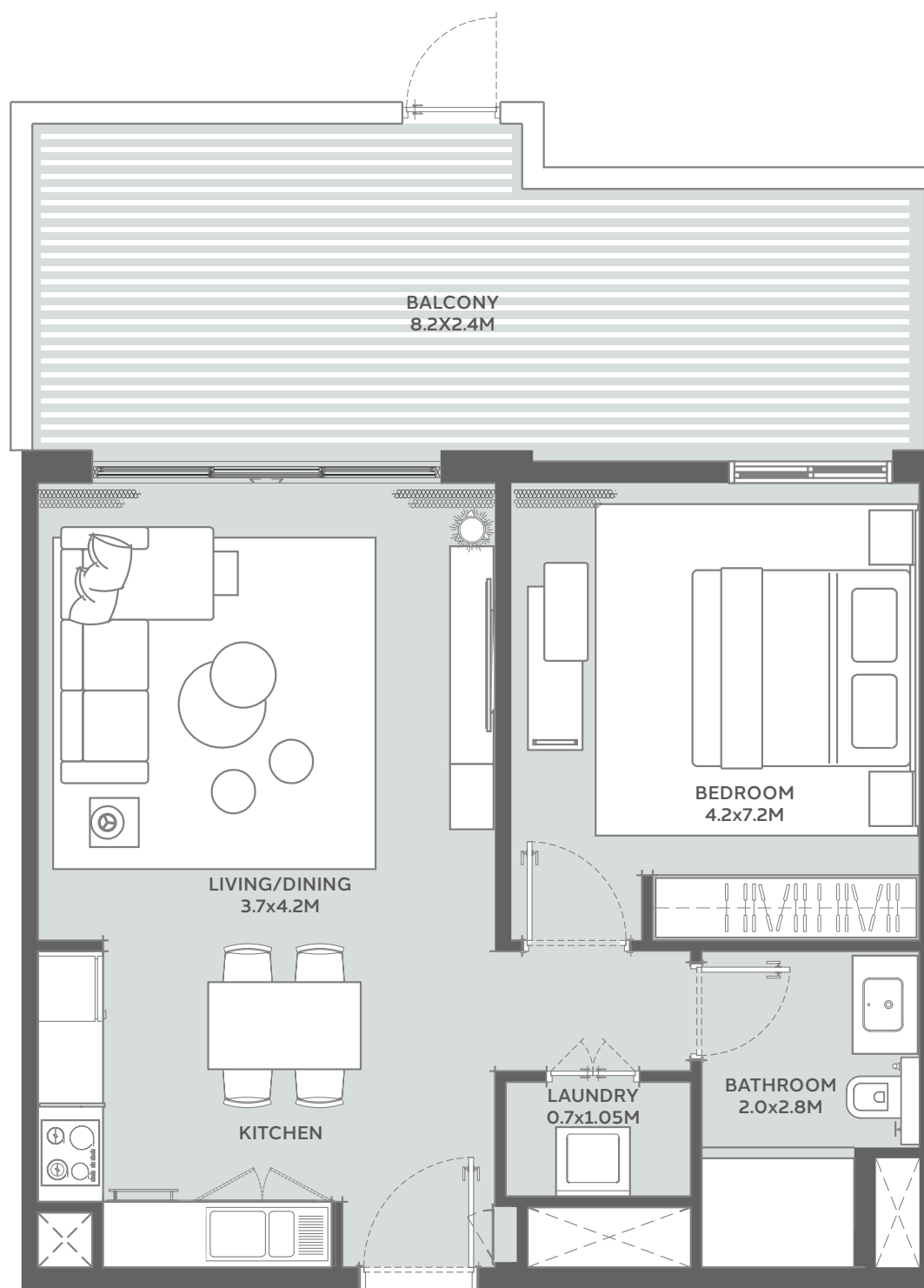
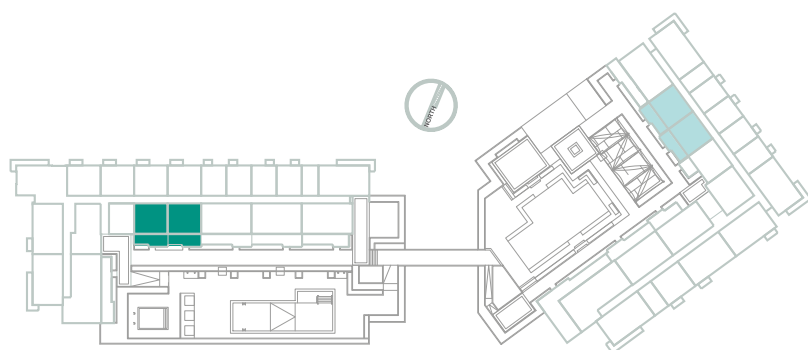
■ Displayed Floor Plan
■ Mirrored Floor Plan

Disclaimer: 1. All room dimensions are measured to structural elements and exclude all finishes and construction tolerances. 2. All materials, dimensions, symbols, and characters indicated on the plans are indicative. 3. The attached plans are for marketing purposes only. Actual suite area may vary from the stated area. Drawings not to scale. The developer reserves the right to make revisions. 4. The areas specified in this unit plan have been calculated based on Bahrain Property Measurement system (BPMS), in general as per the following standards: Inside face of all bounding walls, all centerline of any party walls to adjoining units, excluding the ducts and shafts containing shared building services (refers to Sales and Purchase Agreement). 5. The Unit Site Plan has been prepared for the purpose of identifying the areas of the Unit calculated in accordance with the methodology in note (5). These areas may or may not correspond with any methodologies adopted by the relevant authorities. 6. The units are measured at typical floor in the building. Columns may vary in size depending on the floor level.

MARASSI TERRACES

ONE BEDROOM TYPE 1P

SUITE AREA	57.97 sqm
BALCONY AREA	25.44 sqm
TOTAL AREA	83.41sqm



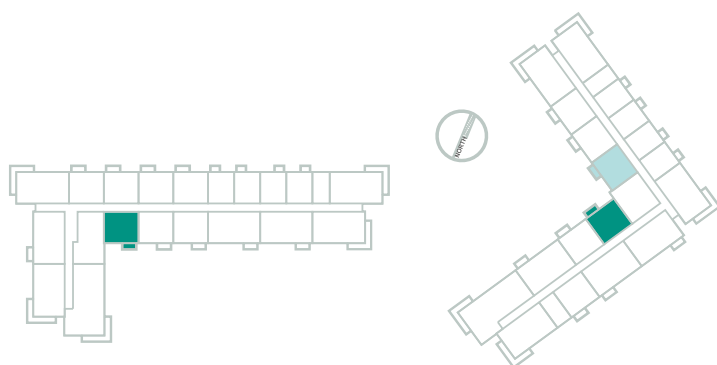
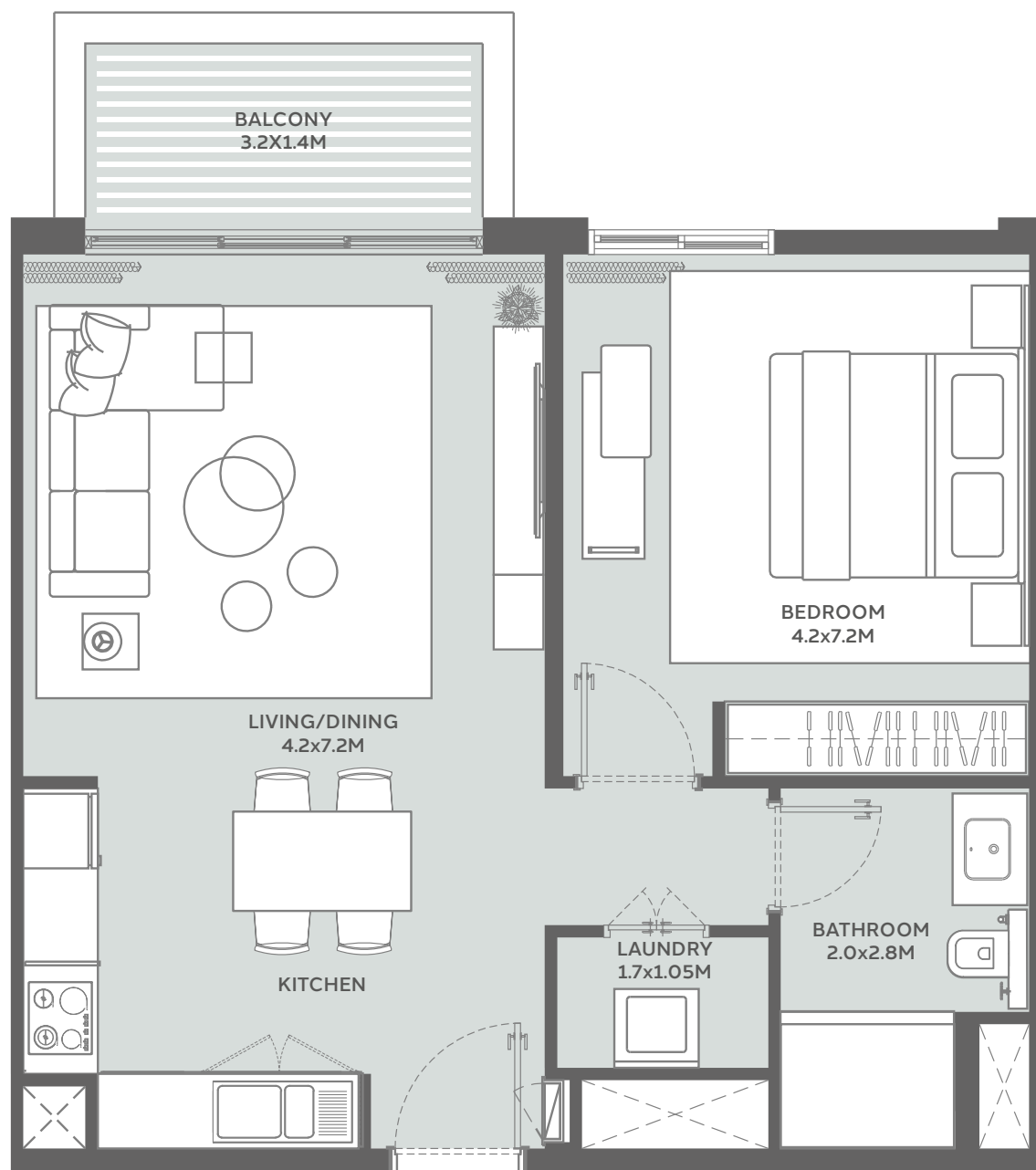
■ Displayed Floor Plan
■ Mirrored Floor Plan

Disclaimer: 1. All room dimensions are measured to structural elements and exclude all finishes and construction tolerances. 2. All materials, dimensions, symbols, and characters indicated on the plans are indicative. 3. The attached plans are for marketing purposes only. Actual suite area may vary from the stated area. Drawings not to scale. The developer reserves the right to make revisions. 4. The areas specified in this unit plan have been calculated based on Bahrain Property Measurement system (BPMS), in general as per the following standards: Inside face of all bounding walls, all centerline of any party walls to adjoining units, excluding the ducts and shafts containing shared building services (refers to Sales and Purchase Agreement). 5. The Unit Site Plan has been prepared for the purpose of identifying the areas of the Unit calculated in accordance with the methodology in note (5). These areas may or may not correspond with any methodologies adopted by the relevant authorities. 6. The units are measured at typical floor in the building. Columns may vary in size depending on the floor level.

MARASSI TERRACES

ONE BEDROOM TYPE 02

SUITE AREA	57.06 sqm
BALCONY AREA	5.44 sqm
TOTAL AREA	62.50 sqm



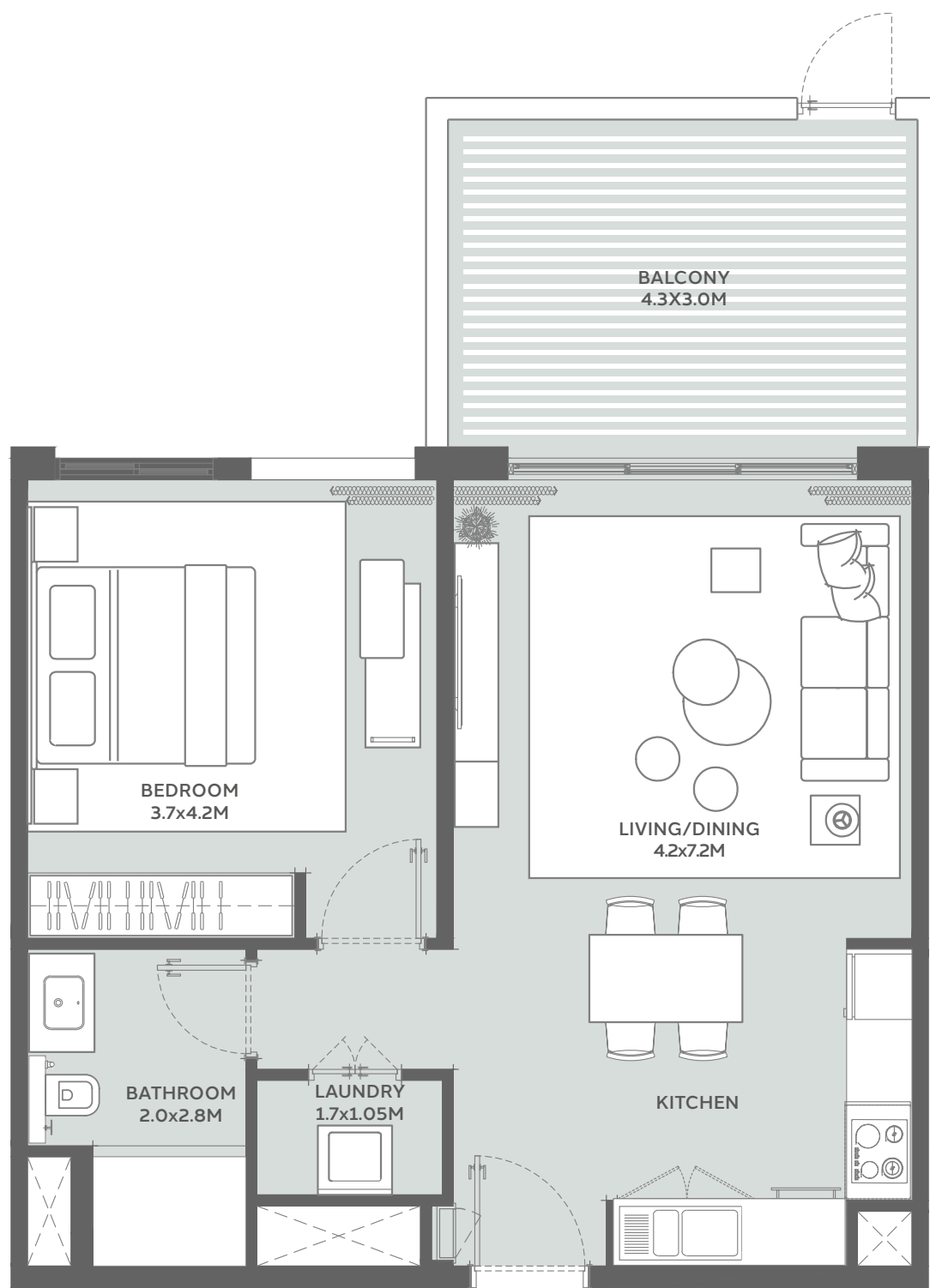
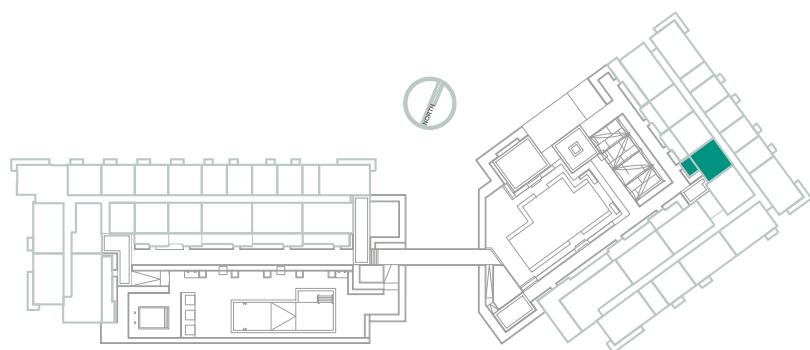
■ Displayed Floor Plan
■ Mirrored Floor Plan

Disclaimer: 1. All room dimensions are measured to structural elements and exclude all finishes and construction tolerances. 2. All materials, dimensions, symbols, and characters indicated on the plans are indicative. 3. The attached plans are for marketing purposes only. Actual suite area may vary from the stated area. Drawings not to scale. The developer reserves the right to make revisions. 4. The areas specified in this unit plan have been calculated based on Bahrain Property Measurement system (BPMS), in general as per the following standards: Inside face of all bounding walls, all centerline of any party walls to adjoining units, excluding the ducts and shafts containing shared building services (refers to Sales and Purchase Agreement). 5. The Unit Site Plan has been prepared for the purpose of identifying the areas of the Unit calculated in accordance with the methodology in note (5). These areas may or may not correspond with any methodologies adopted by the relevant authorities. 6. The units are measured at typical floor in the building. Columns may vary in size depending on the floor level.

MARASSI TERRACES

ONE BEDROOM TYPE 2P

SUITE AREA	57.06 sqm
BALCONY AREA	14.52 sqm
TOTAL AREA	71.58 sqm



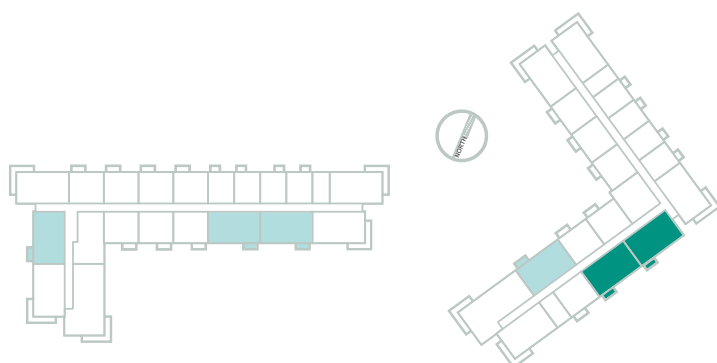
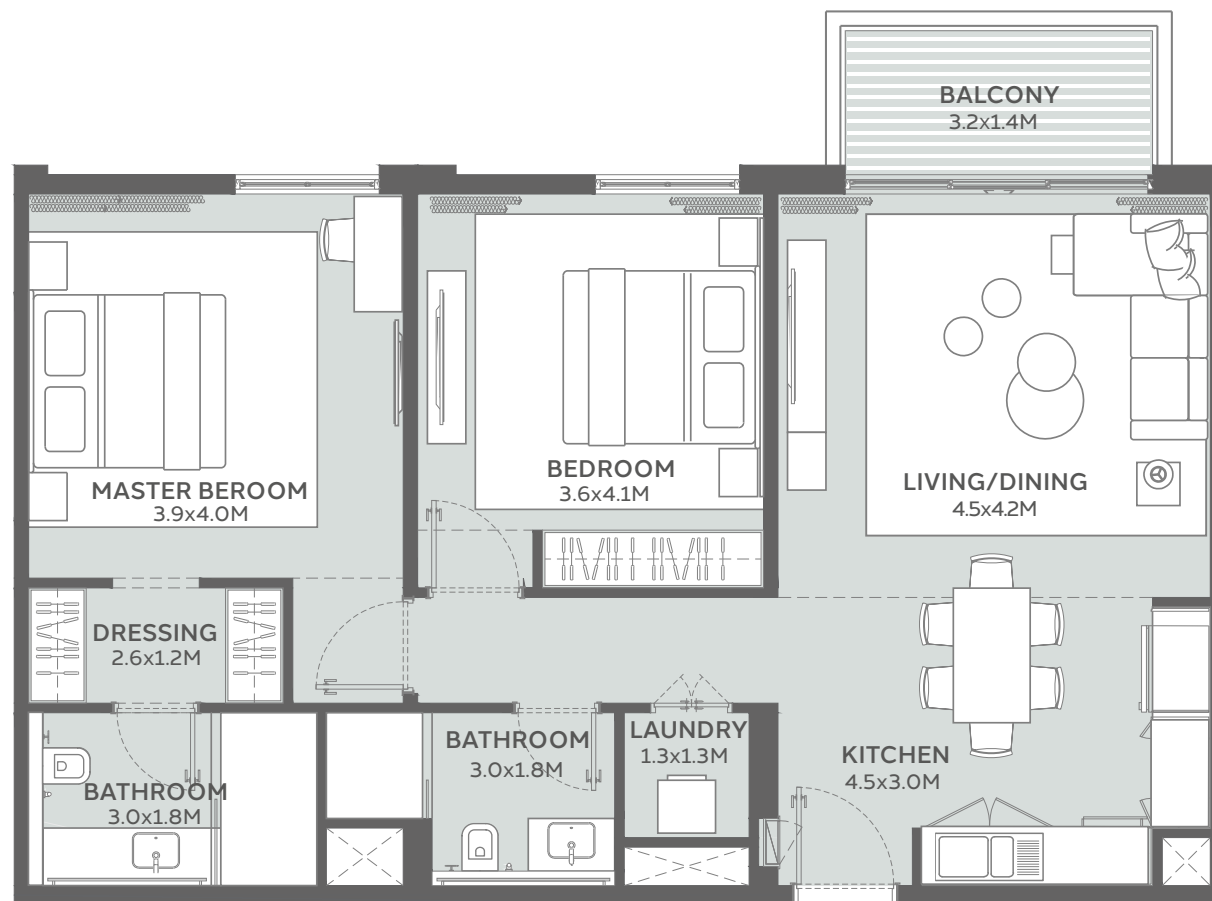
■ Displayed Floor Plan
■ Mirrored Floor Plan

Disclaimer: 1. All room dimensions are measured to structural elements and exclude all finishes and construction tolerances. 2. All materials, dimensions, symbols, and characters indicated on the plans are indicative. 3. The attached plans are for marketing purposes only. Actual suite area may vary from the stated area. Drawings not to scale. The developer reserves the right to make revisions. 4. The areas specified in this unit plan have been calculated based on Bahrain Property Measurement system (BPMS), in general as per the following standards: Inside face of all bounding walls, all centerline of any party walls to adjoining units, excluding the ducts and shafts containing shared building services (refers to Sales and Purchase Agreement). 5. The Unit Site Plan has been prepared for the purpose of identifying the areas of the Unit calculated in accordance with the methodology in note (5). These areas may or may not correspond with any methodologies adopted by the relevant authorities. 6. The units are measured at typical floor in the building. Columns may vary in size depending on the floor level.

MARASSI TERRACES

TWO BEDROOM TYPE 1A

SUITE AREA	87.59 sqm
BALCONY AREA	5.44 sqm
TOTAL AREA	93.03 sqm



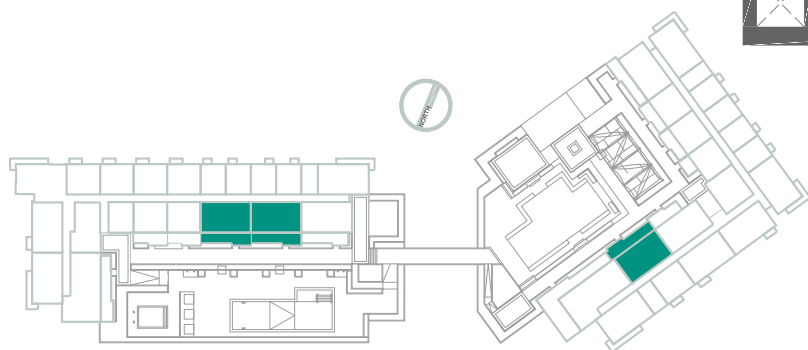
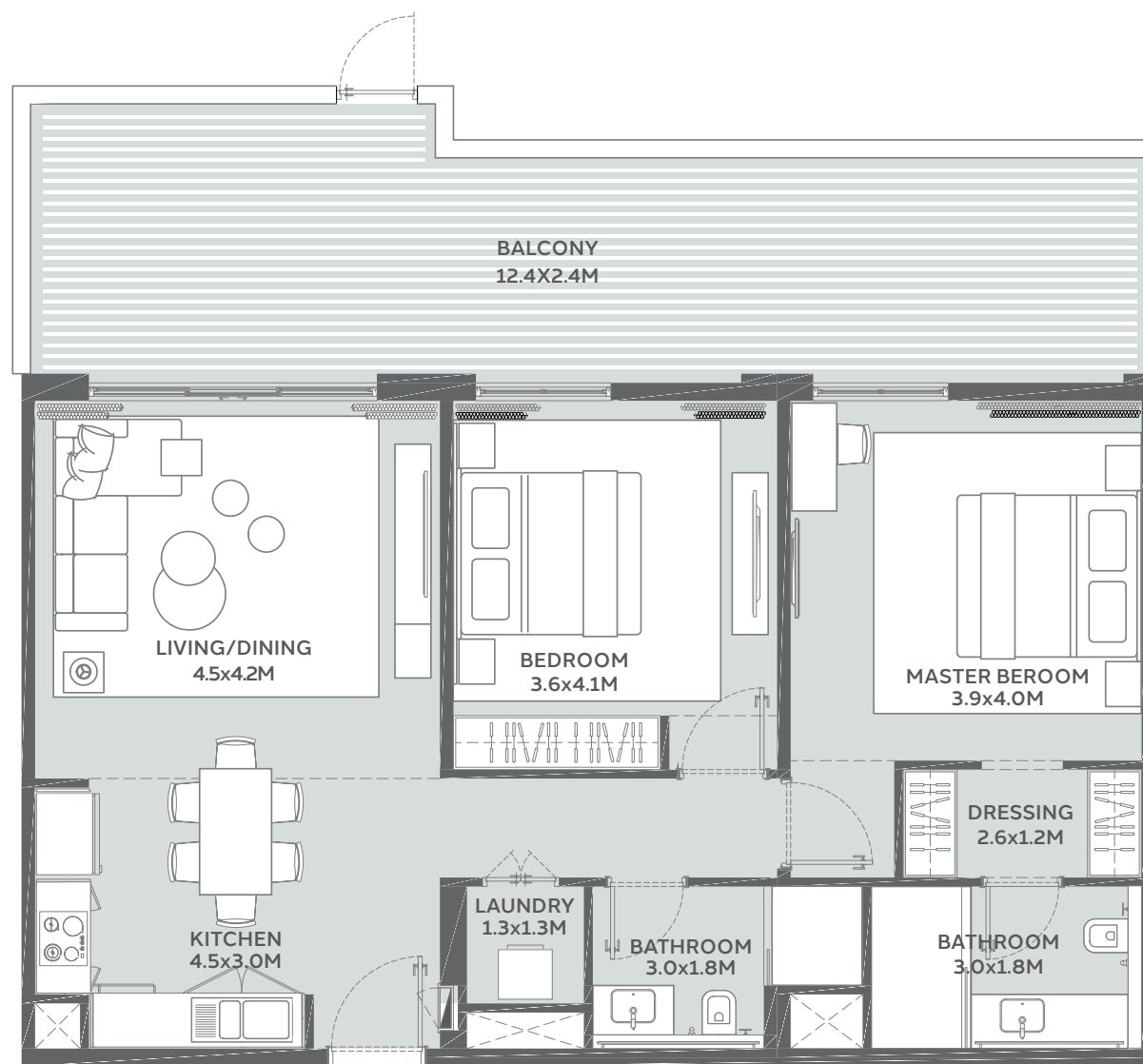
■ Displayed Floor Plan
■ Mirrored Floor Plan

Disclaimer: 1. All room dimensions are measured to structural elements and exclude all finishes and construction tolerances. 2. All materials, dimensions, symbols, and characters indicated on the plans are indicative. 3. The attached plans are for marketing purposes only. Actual suite area may vary from the stated area. Drawings not to scale. The developer reserves the right to make revisions. 4. The areas specified in this unit plan have been calculated based on Bahrain Property Measurement system (BPMS), in general as per the following standards: Inside face of all bounding walls, all centerline of any party walls to adjoining units, excluding the ducts and shafts containing shared building services (refers to Sales and Purchase Agreement). 5. The Unit Site Plan has been prepared for the purpose of identifying the areas of the Unit calculated in accordance with the methodology in note (5). These areas may or may not correspond with any methodologies adopted by the relevant authorities. 6. The units are measured at typical floor in the building. Columns may vary in size depending on the floor level.

MARASSI TERRACES

TWO BEDROOM TYPE 1P

SUITE AREA	88.58 sqm
BALCONY AREA	36.78 sqm
TOTAL AREA	125.36 sqm



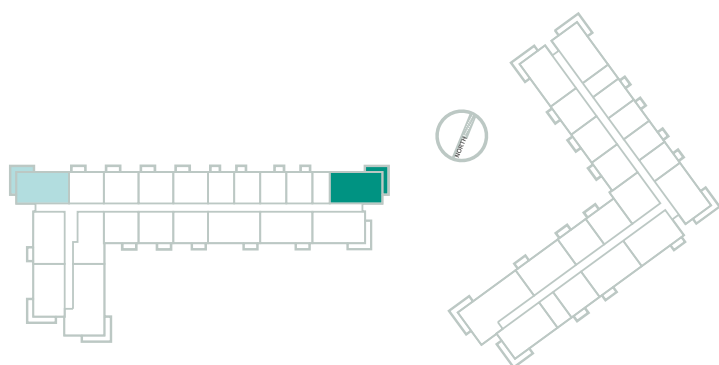
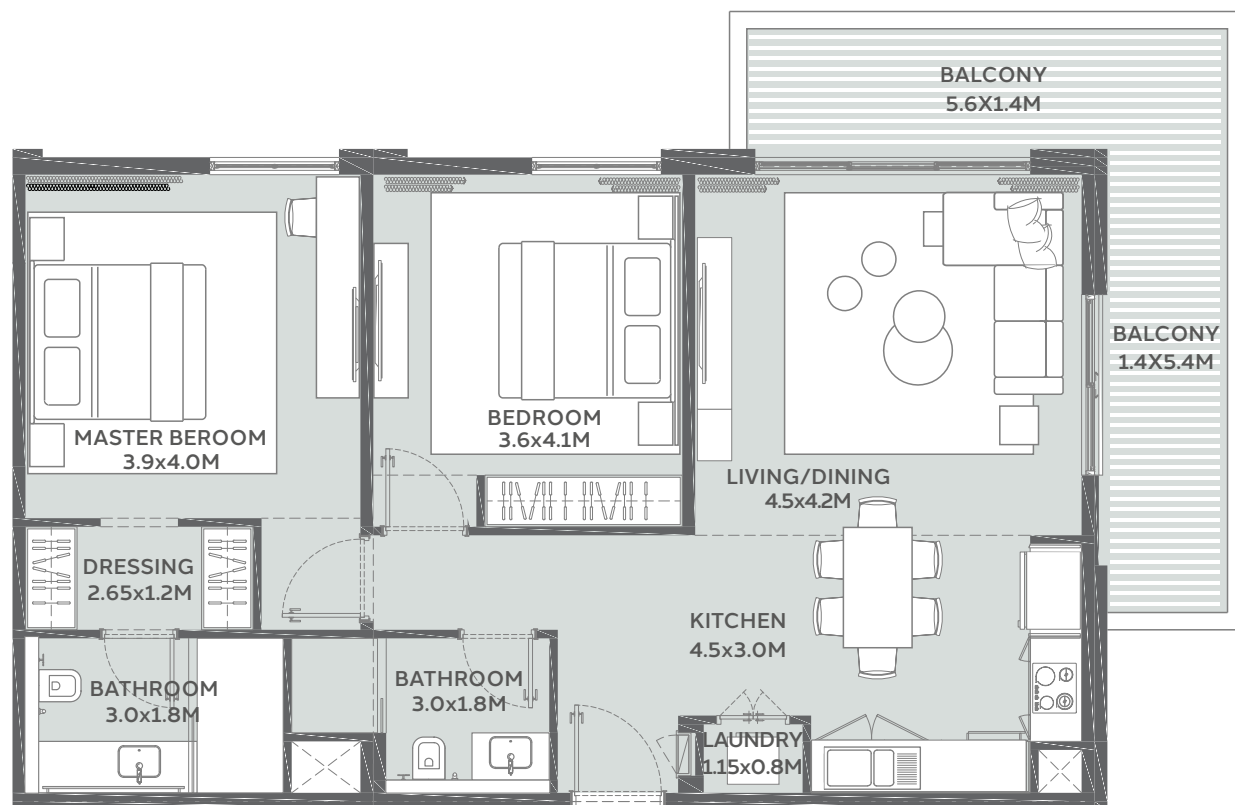
■ Displayed Floor Plan
■ Mirrored Floor Plan

Disclaimer: 1. All room dimensions are measured to structural elements and exclude all finishes and construction tolerances. 2. All materials, dimensions, symbols, and characters indicated on the plans are indicative. 3. The attached plans are for marketing purposes only. Actual suite area may vary from the stated area. Drawings not to scale. The developer reserves the right to make revisions. 4. The areas specified in this unit plan have been calculated based on Bahrain Property Measurement system (BPMS), in general as per the following standards: Inside face of all bounding walls, all centerline of any party walls to adjoining units, excluding the ducts and shafts containing shared building services (refers to Sales and Purchase Agreement). 5. The Unit Site Plan has been prepared for the purpose of identifying the areas of the Unit calculated in accordance with the methodology in note (5). These areas may or may not correspond with any methodologies adopted by the relevant authorities. 6. The units are measured at typical floor in the building. Columns may vary in size depending on the floor level.

MARASSI TERRACES

TWO BEDROOM TYPE 2A

SUITE AREA	87.36 sqm
BALCONY AREA	18.19 sqm
TOTAL AREA	105.55 sqm



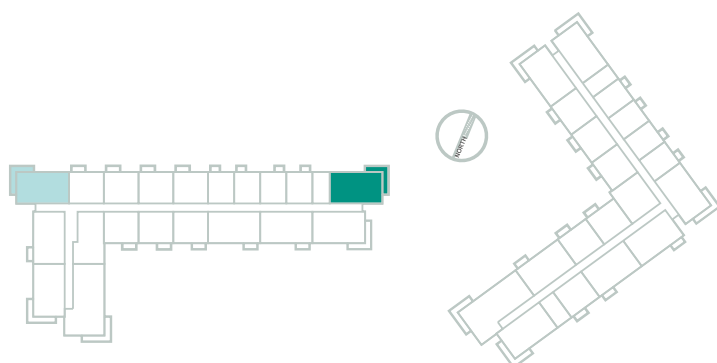
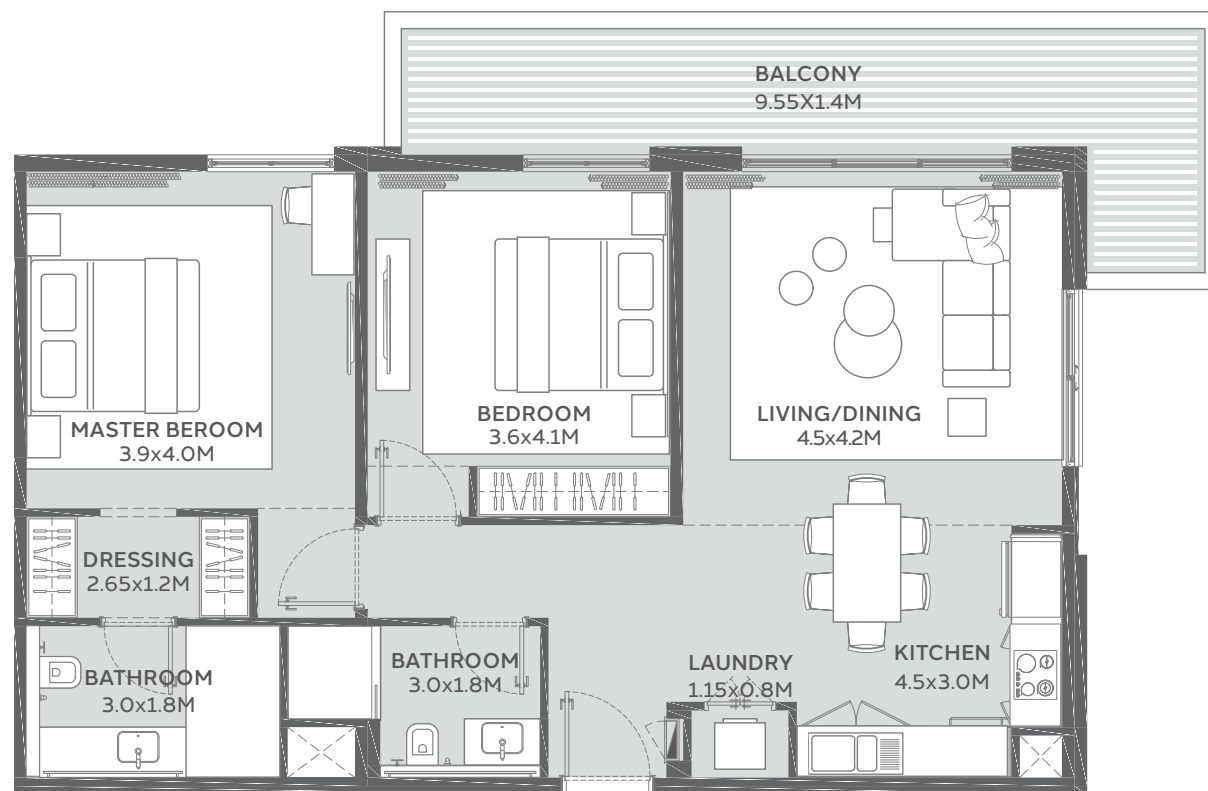
■ Displayed Floor Plan
■ Mirrored Floor Plan

Disclaimer: 1. All room dimensions are measured to structural elements and exclude all finishes and construction tolerances. 2. All materials, dimensions, symbols, and characters indicated on the plans are indicative. 3. The attached plans are for marketing purposes only. Actual suite area may vary from the stated area. Drawings not to scale. The developer reserves the right to make revisions. 4. The areas specified in this unit plan have been calculated based on Bahrain Property Measurement system (BPMS), in general as per the following standards: Inside face of all bounding walls, all centerline of any party walls to adjoining units, excluding the ducts and shafts containing shared building services (refers to Sales and Purchase Agreement). 5. The Unit Site Plan has been prepared for the purpose of identifying the areas of the Unit calculated in accordance with the methodology in note (5). These areas may or may not correspond with any methodologies adopted by the relevant authorities. 6. The units are measured at typical floor in the building. Columns may vary in size depending on the floor level.

MARASSI TERRACES

TWO BEDROOM TYPE 02B

SUITE AREA	87.36 sqm
BALCONY AREA	18.28 sqm
TOTAL AREA	105.64 sqm



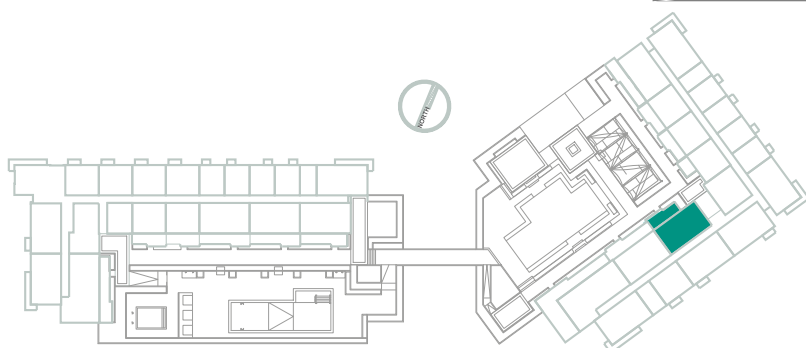
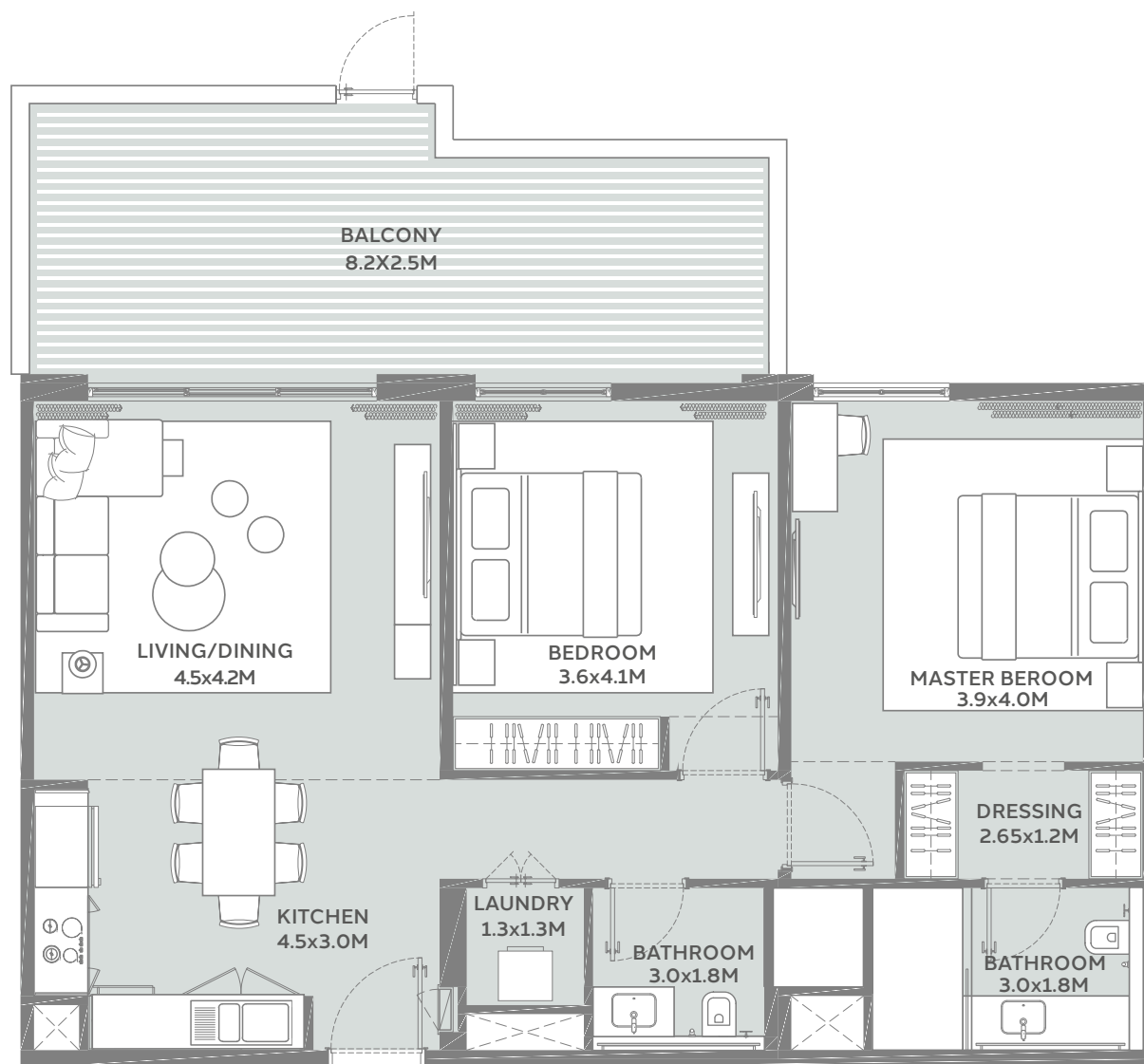
■ Displayed Floor Plan
■ Mirrored Floor Plan

Disclaimer: 1. All room dimensions are measured to structural elements and exclude all finishes and construction tolerances. 2. All materials, dimensions, symbols, and characters indicated on the plans are indicative. 3. The attached plans are for marketing purposes only. Actual suite area may vary from the stated area. Drawings not to scale. The developer reserves the right to make revisions. 4. The areas specified in this unit plan have been calculated based on Bahrain Property Measurement system (BPMS), in general as per the following standards: Inside face of all bounding walls, all centerline of any party walls to adjoining units, excluding the ducts and shafts containing shared building services (refers to Sales and Purchase Agreement). 5. The Unit Site Plan has been prepared for the purpose of identifying the areas of the Unit calculated in accordance with the methodology in note (5). These areas may or may not correspond with any methodologies adopted by the relevant authorities. 6. The units are measured at typical floor in the building. Columns may vary in size depending on the floor level.

MARASSI TERRACES

TWO BEDROOM TYPE 2P

SUITE AREA	87.50 sqm
BALCONY AREA	25.17 sqm
TOTAL AREA	112.67 sqm



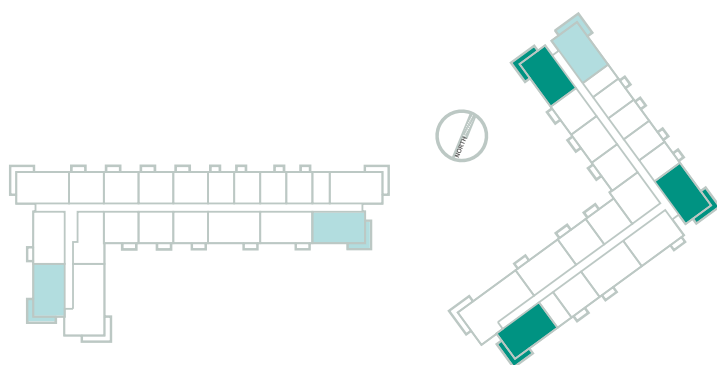
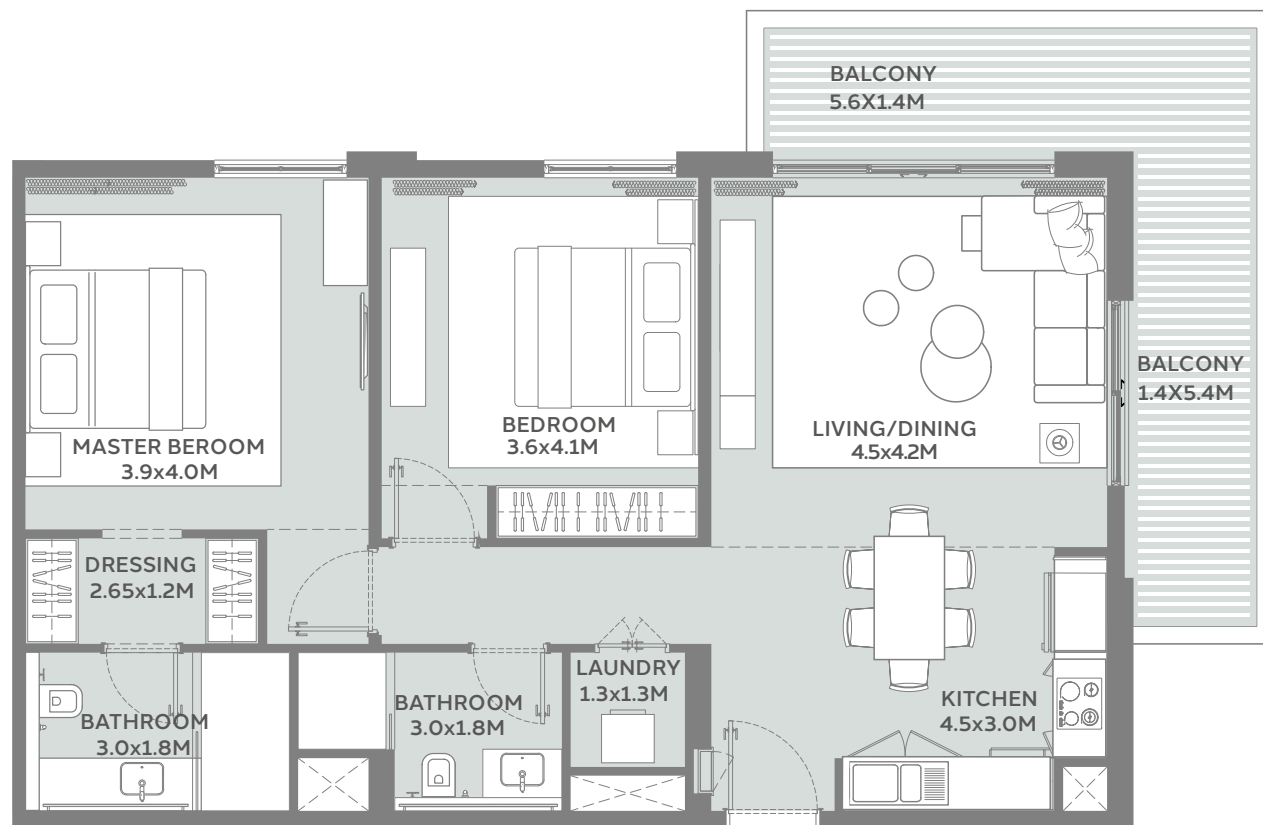
■ Displayed Floor Plan
■ Mirrored Floor Plan

Disclaimer: 1. All room dimensions are measured to structural elements and exclude all finishes and construction tolerances. 2. All materials, dimensions, symbols, and characters indicated on the plans are indicative. 3. The attached plans are for marketing purposes only. Actual suite area may vary from the stated area. Drawings not to scale. The developer reserves the right to make revisions. 4. The areas specified in this unit plan have been calculated based on Bahrain Property Measurement system (BPMS), in general as per the following standards: Inside face of all bounding walls, all centerline of any party walls to adjoining units, excluding the ducts and shafts containing shared building services (refers to Sales and Purchase Agreement). 5. The Unit Site Plan has been prepared for the purpose of identifying the areas of the Unit calculated in accordance with the methodology in note (5). These areas may or may not correspond with any methodologies adopted by the relevant authorities. 6. The units are measured at typical floor in the building. Columns may vary in size depending on the floor level.

MARASSI TERRACES

TWO BEDROOM TYPE 3A

SUITE AREA	86.22 sqm
BALCONY AREA	18.27 sqm
TOTAL AREA	104.49 sqm



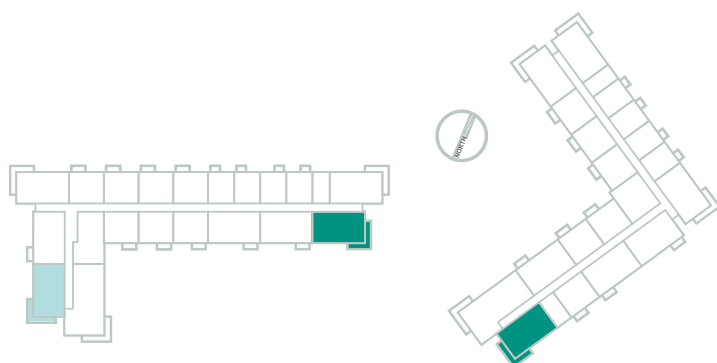
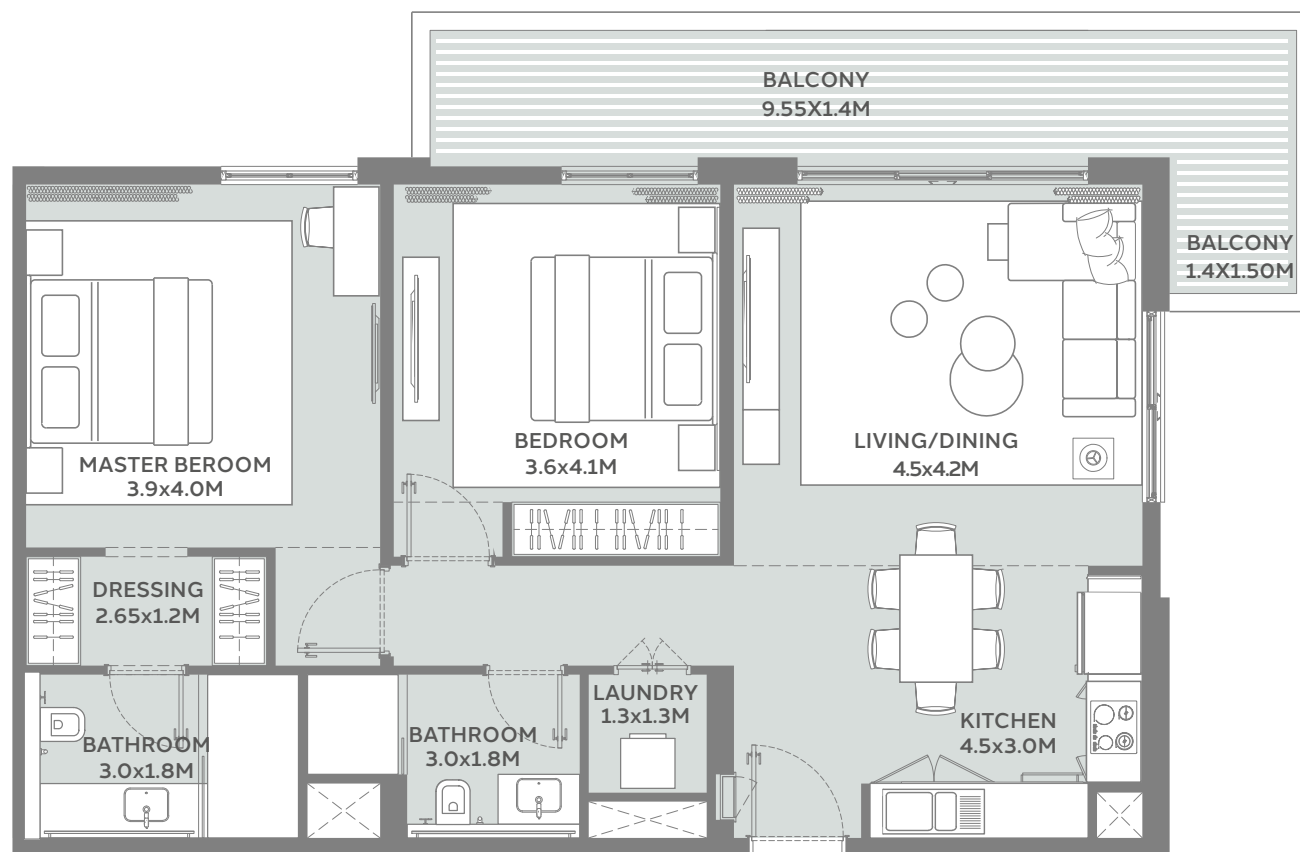
■ Displayed Floor Plan
■ Mirrored Floor Plan

Disclaimer: 1. All room dimensions are measured to structural elements and exclude all finishes and construction tolerances. 2. All materials, dimensions, symbols, and characters indicated on the plans are indicative. 3. The attached plans are for marketing purposes only. Actual suite area may vary from the stated area. Drawings not to scale. The developer reserves the right to make revisions. 4. The areas specified in this unit plan have been calculated based on Bahrain Property Measurement system (BPMS), in general as per the following standards: Inside face of all bounding walls, all centerline of any party walls to adjoining units, excluding the ducts and shafts containing shared building services (refers to Sales and Purchase Agreement). 5. The Unit Site Plan has been prepared for the purpose of identifying the areas of the Unit calculated in accordance with the methodology in note (5). These areas may or may not correspond with any methodologies adopted by the relevant authorities. 6. The units are measured at typical floor in the building. Columns may vary in size depending on the floor level.

MARASSI TERRACES

TWO BEDROOM TYPE 03B

SUITE AREA	87.59 sqm
BALCONY AREA	18.19 sqm
TOTAL AREA	105.78 sqm



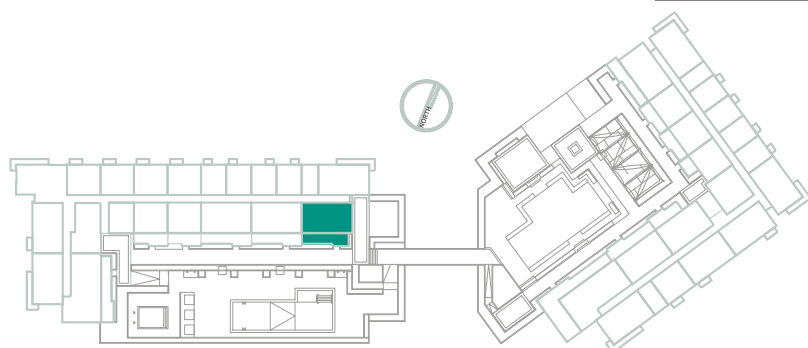
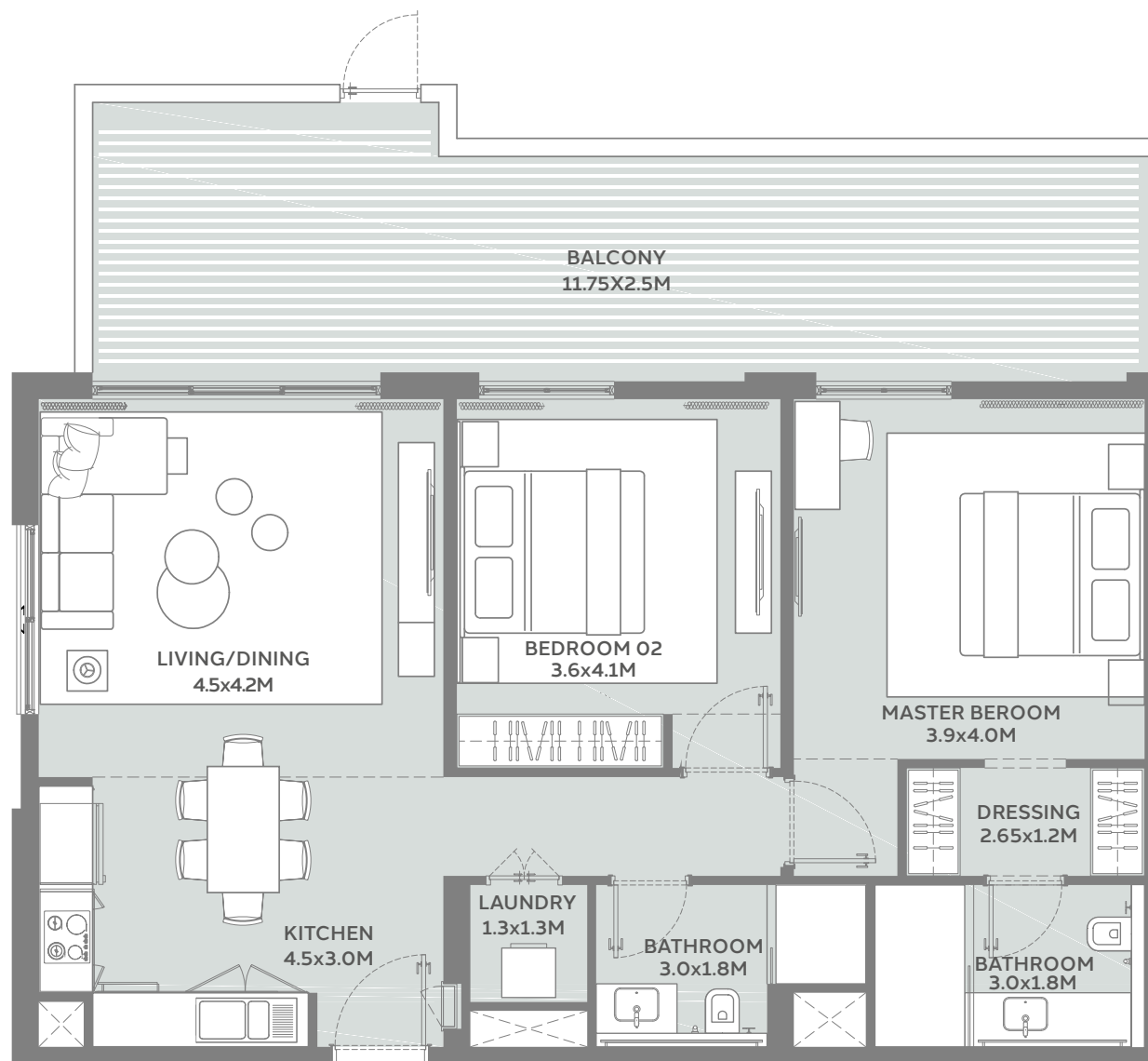
■ Displayed Floor Plan
■ Mirrored Floor Plan

Disclaimer: 1. All room dimensions are measured to structural elements and exclude all finishes and construction tolerances. 2. All materials, dimensions, symbols, and characters indicated on the plans are indicative. 3. The attached plans are for marketing purposes only. Actual suite area may vary from the stated area. Drawings not to scale. The developer reserves the right to make revisions. 4. The areas specified in this unit plan have been calculated based on Bahrain Property Measurement system (BPMS), in general as per the following standards: Inside face of all bounding walls, all centerline of any party walls to adjoining units, excluding the ducts and shafts containing shared building services (refers to Sales and Purchase Agreement). 5. The Unit Site Plan has been prepared for the purpose of identifying the areas of the Unit calculated in accordance with the methodology in note (5). These areas may or may not correspond with any methodologies adopted by the relevant authorities. 6. The units are measured at typical floor in the building. Columns may vary in size depending on the floor level.

MARASSI TERRACES

TWO BEDROOM TYPE 3P

SUITE AREA	87.59 sqm
BALCONY AREA	34.31 sqm
TOTAL AREA	121.90 sqm

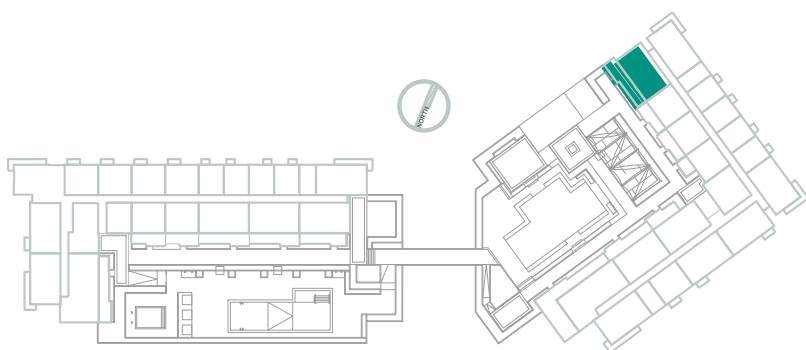
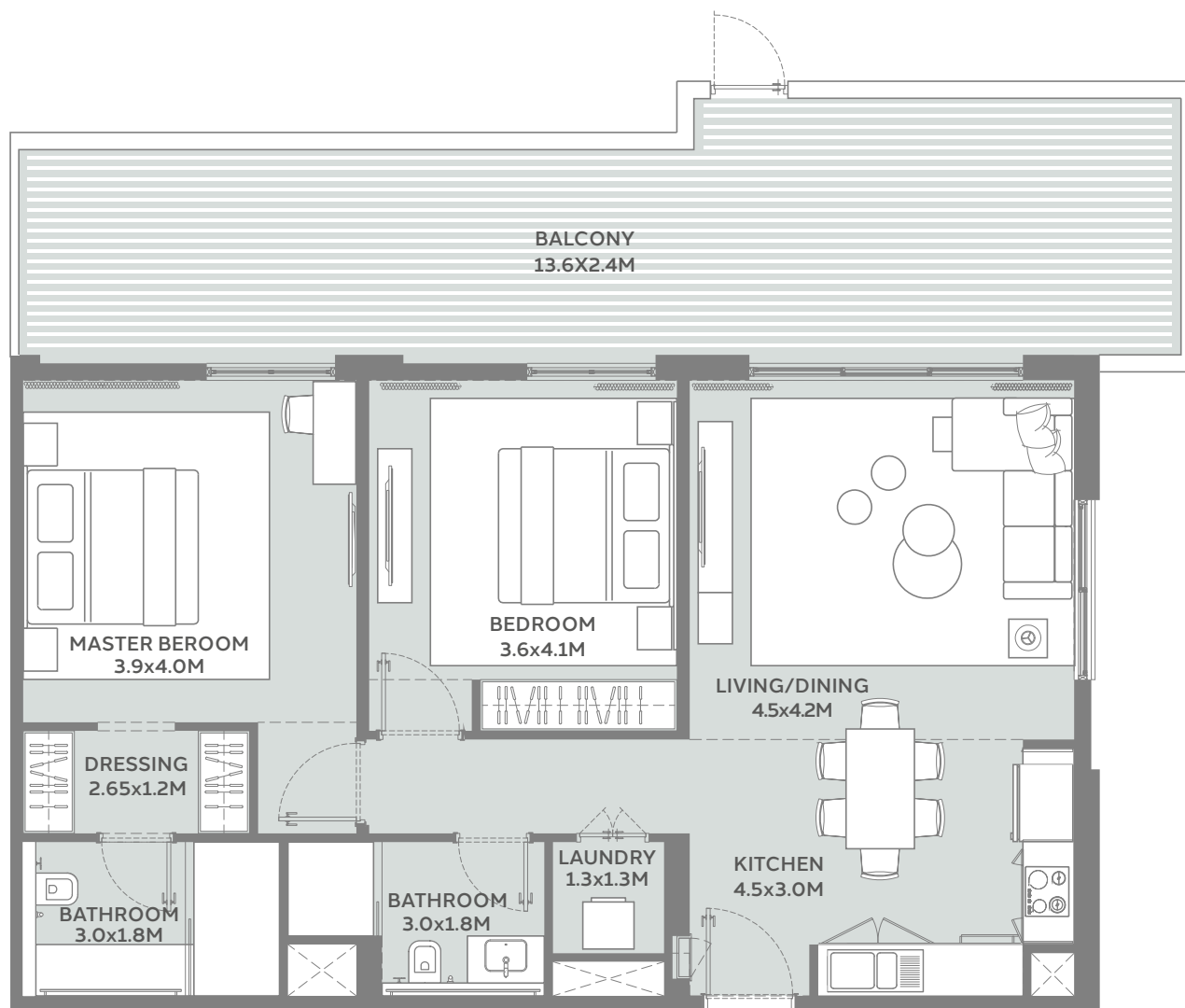


Disclaimer: 1. All room dimensions are measured to structural elements and exclude all finishes and construction tolerances. 2. All materials, dimensions, symbols, and characters indicated on the plans are indicative. 3. The attached plans are for marketing purposes only. Actual suite area may vary from the stated area. Drawings not to scale. The developer reserves the right to make revisions. 4. The areas specified in this unit plan have been calculated based on Bahrain Property Measurement system (BPMS), in general as per the following standards: Inside face of all bounding walls, all centerline of any party walls to adjoining units, excluding the ducts and shafts containing shared building services (refers to Sales and Purchase Agreement). 5. The Unit Site Plan has been prepared for the purpose of identifying the areas of the Unit calculated in accordance with the methodology in note (5). These areas may or may not correspond with any methodologies adopted by the relevant authorities. 6. The units are measured at typical floor in the building. Columns may vary in size depending on the floor level.

MARASSI TERRACES

TWO BEDROOM TYPE 3P1

SUITE AREA	87.59 sqm
BALCONY AREA	40.04 sqm
TOTAL AREA	127.63 sqm



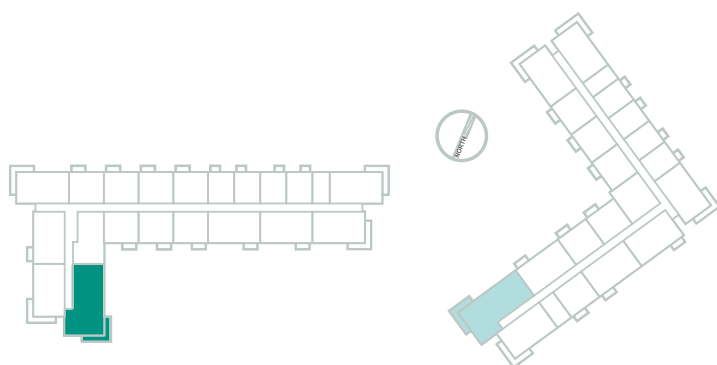
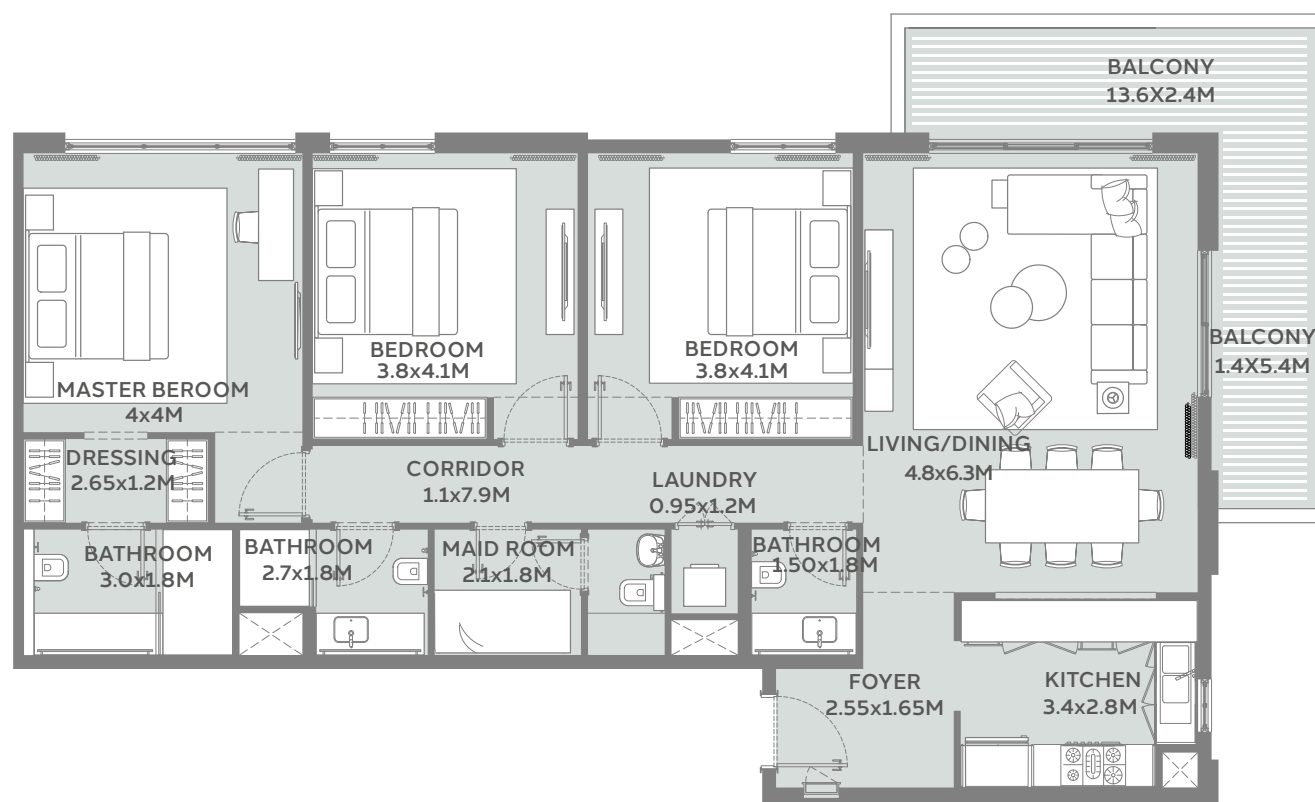
■ Displayed Floor Plan
■ Mirrored Floor Plan

Disclaimer: 1. All room dimensions are measured to structural elements and exclude all finishes and construction tolerances. 2. All materials, dimensions, symbols, and characters indicated on the plans are indicative. 3. The attached plans are for marketing purposes only. Actual suite area may vary from the stated area. Drawings not to scale. The developer reserves the right to make revisions. 4. The areas specified in this unit plan have been calculated based on Bahrain Property Measurement system (BPMS), in general as per the following standards: Inside face of all bounding walls, all centerline of any party walls to adjoining units, excluding the ducts and shafts containing shared building services (refers to Sales and Purchase Agreement). 5. The Unit Site Plan has been prepared for the purpose of identifying the areas of the Unit calculated in accordance with the methodology in note (5). These areas may or may not correspond with any methodologies adopted by the relevant authorities. 6. The units are measured at typical floor in the building. Columns may vary in size depending on the floor level.

MARASSI TERRACES

THREE BEDROOM TYPE 1A

SUITE AREA	130.87 sqm
BALCONY AREA	19.29 sqm
TOTAL AREA	150.16 sqm



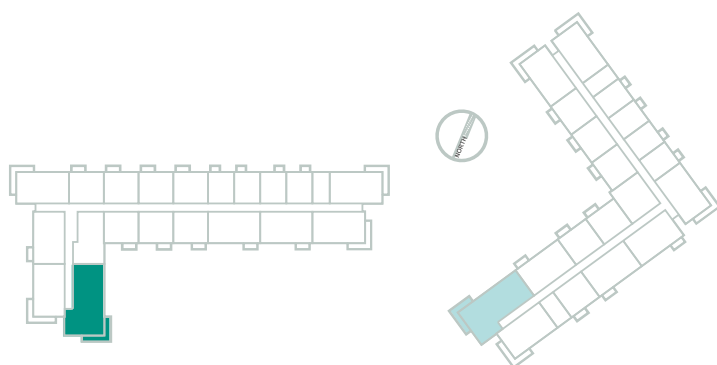
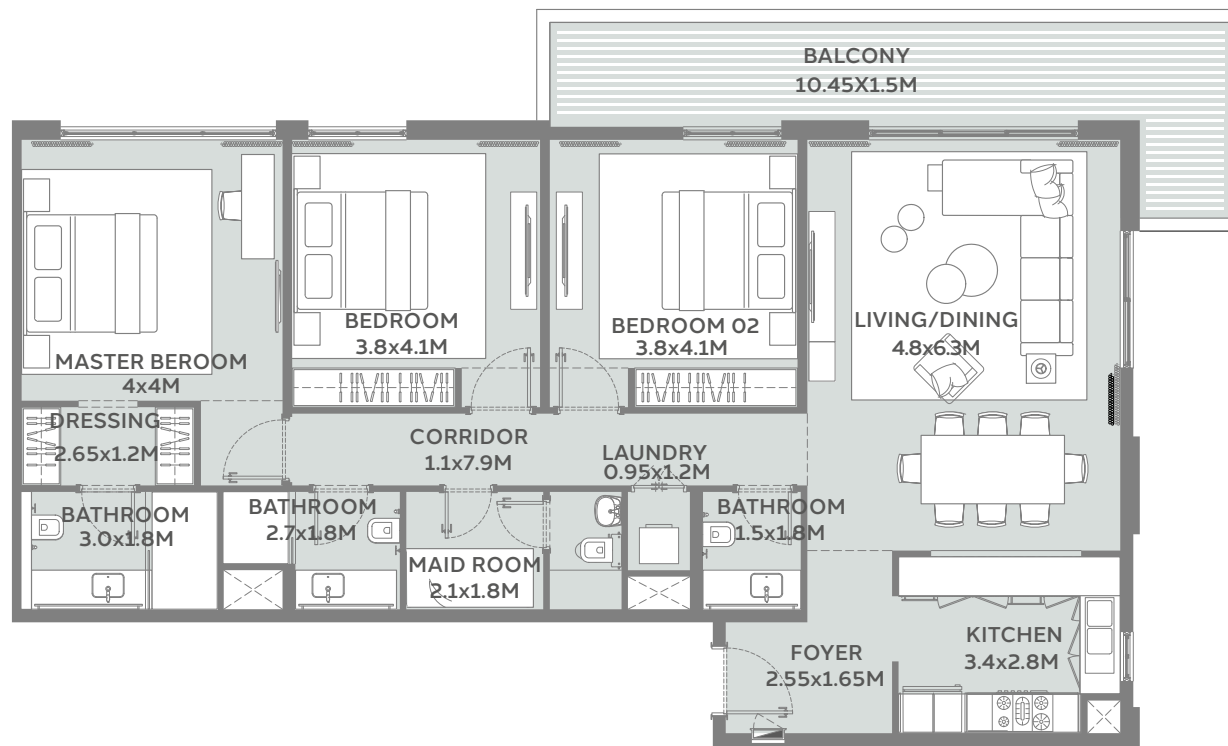
■ Displayed Floor Plan
■ Mirrored Floor Plan

Disclaimer: 1. All room dimensions are measured to structural elements and exclude all finishes and construction tolerances. 2. All materials, dimensions, symbols, and characters indicated on the plans are indicative. 3. The attached plans are for marketing purposes only. Actual suite area may vary from the stated area. Drawings not to scale. The developer reserves the right to make revisions. 4. The areas specified in this unit plan have been calculated based on Bahrain Property Measurement system (BPMS), in general as per the following standards: Inside face of all bounding walls, all centerline of any party walls to adjoining units, excluding the ducts and shafts containing shared building services (refers to Sales and Purchase Agreement). 5. The Unit Site Plan has been prepared for the purpose of identifying the areas of the Unit calculated in accordance with the methodology in note (5). These areas may or may not correspond with any methodologies adopted by the relevant authorities. 6. The units are measured at typical floor in the building. Columns may vary in size depending on the floor level.

MARASSI TERRACES

THREE BEDROOM TYPE 1B

SUITE AREA	130.87 sqm
BALCONY AREA	19.29 sqm
TOTAL AREA	150.16 sqm



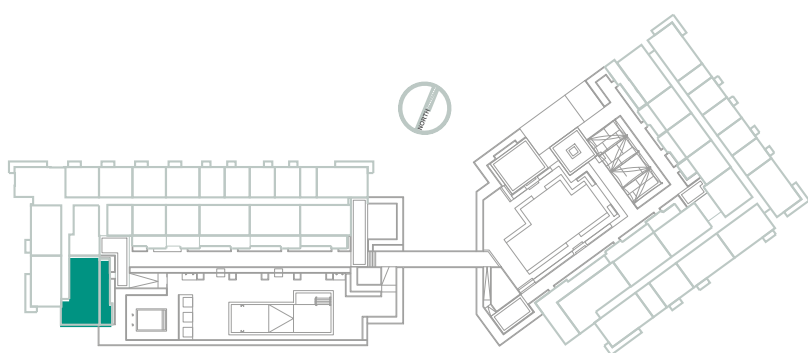
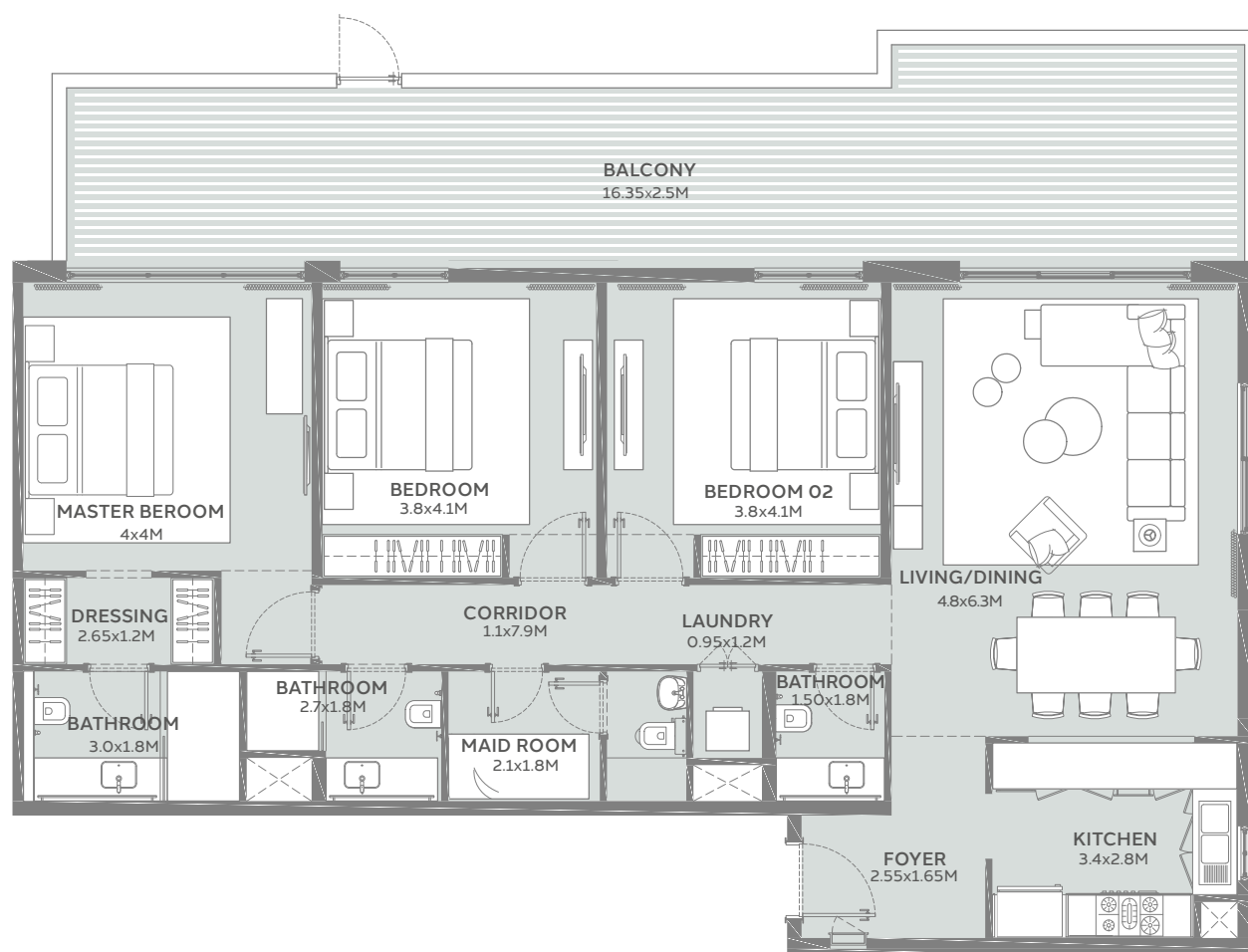
■ Displayed Floor Plan
■ Mirrored Floor Plan

Disclaimer: 1. All room dimensions are measured to structural elements and exclude all finishes and construction tolerances. 2. All materials, dimensions, symbols, and characters indicated on the plans are indicative. 3. The attached plans are for marketing purposes only. Actual suite area may vary from the stated area. Drawings not to scale. The developer reserves the right to make revisions. 4. The areas specified in this unit plan have been calculated based on Bahrain Property Measurement system (BPMS), in general as per the following standards: Inside face of all bounding walls, all centerline of any party walls to adjoining units, excluding the ducts and shafts containing shared building services (refers to Sales and Purchase Agreement). 5. The Unit Site Plan has been prepared for the purpose of identifying the areas of the Unit calculated in accordance with the methodology in note (5). These areas may or may not correspond with any methodologies adopted by the relevant authorities. 6. The units are measured at typical floor in the building. Columns may vary in size depending on the floor level.

MARASSI TERRACES

THREE BEDROOM TYPE 1P

SUITE AREA	130.86 sqm
BALCONY AREA	47.09 sqm
TOTAL AREA	177.95 sqm



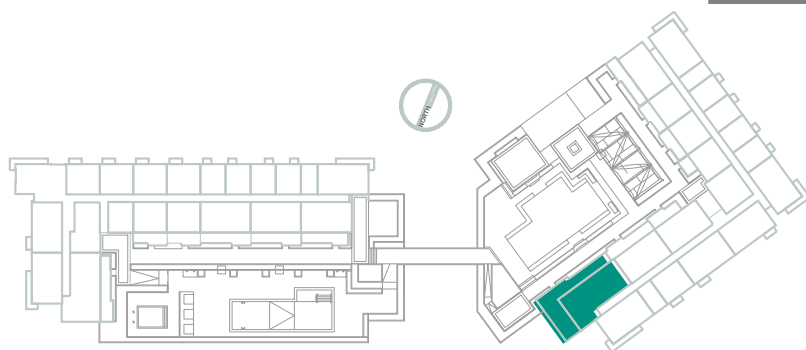
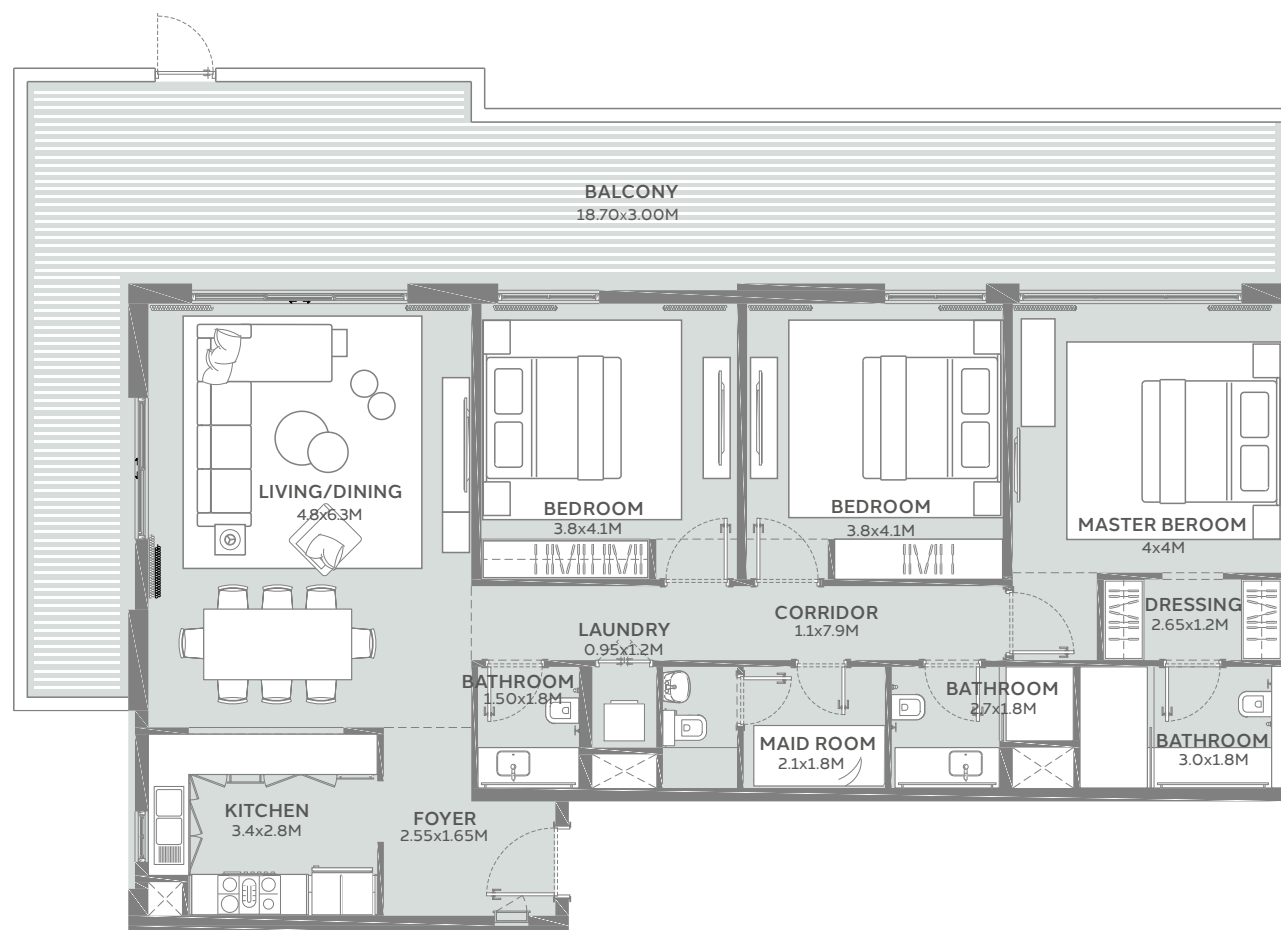
■ Displayed Floor Plan
■ Mirrored Floor Plan

Disclaimer: 1. All room dimensions are measured to structural elements and exclude all finishes and construction tolerances. 2. All materials, dimensions, symbols, and characters indicated on the plans are indicative. 3. The attached plans are for marketing purposes only. Actual suite area may vary from the stated area. Drawings not to scale. The developer reserves the right to make revisions. 4. The areas specified in this unit plan have been calculated based on Bahrain Property Measurement system (BPMS), in general as per the following standards: Inside face of all bounding walls, all centerline of any party walls to adjoining units, excluding the ducts and shafts containing shared building services (refers to Sales and Purchase Agreement). 5. The Unit Site Plan has been prepared for the purpose of identifying the areas of the Unit calculated in accordance with the methodology in note (5). These areas may or may not correspond with any methodologies adopted by the relevant authorities. 6. The units are measured at typical floor in the building. Columns may vary in size depending on the floor level.

MARASSI TERRACES

THREE BEDROOM TYPE 2P

SUITE AREA	131.95 sqm
BALCONY AREA	64.98 sqm
TOTAL AREA	196.93 sqm



■ Displayed Floor Plan
■ Mirrored Floor Plan

Disclaimer: 1. All room dimensions are measured to structural elements and exclude all finishes and construction tolerances. 2. All materials, dimensions, symbols, and characters indicated on the plans are indicative. 3. The attached plans are for marketing purposes only. Actual suite area may vary from the stated area. Drawings not to scale. The developer reserves the right to make revisions. 4. The areas specified in this unit plan have been calculated based on Bahrain Property Measurement system (BPMS), in general as per the following standards: Inside face of all bounding walls, all centerline of any party walls to adjoining units, excluding the ducts and shafts containing shared building services (refers to Sales and Purchase Agreement). 5. The Unit Site Plan has been prepared for the purpose of identifying the areas of the Unit calculated in accordance with the methodology in note (5). These areas may or may not correspond with any methodologies adopted by the relevant authorities. 6. The units are measured at typical floor in the building. Columns may vary in size depending on the floor level.