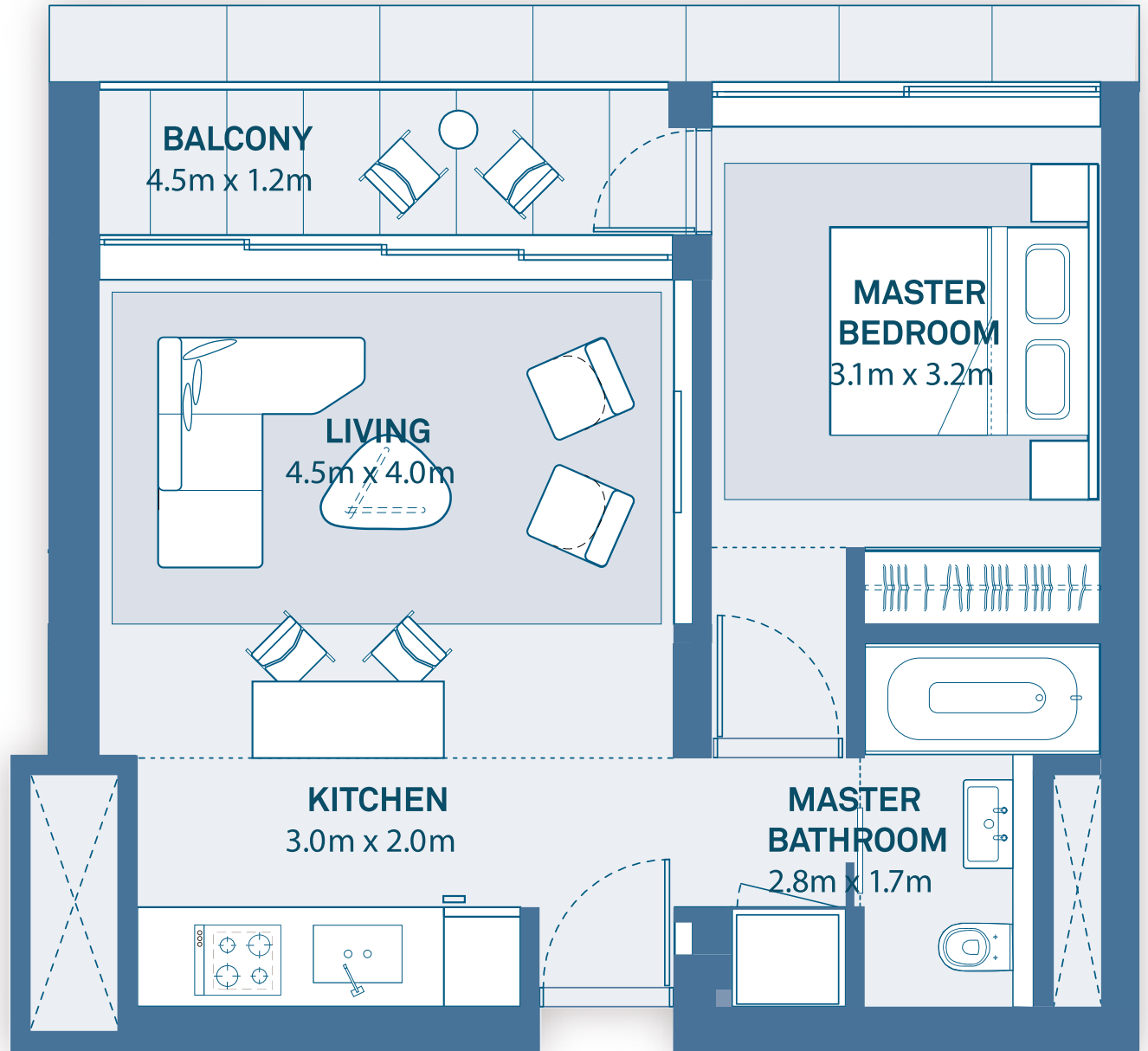


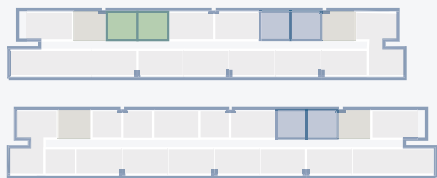
**TYPICAL 1 BEDROOM  
 NORTHERLY ASPECT**

Residential Towers 1,2  
 Tower 1: Level 1 - Level 8  
 Tower 2: Level 2 - Level 8

Suite Area	55 sq. m
Balcony Area	5 sq. m
Total Area	60 sq. m



**KEY PLAN**



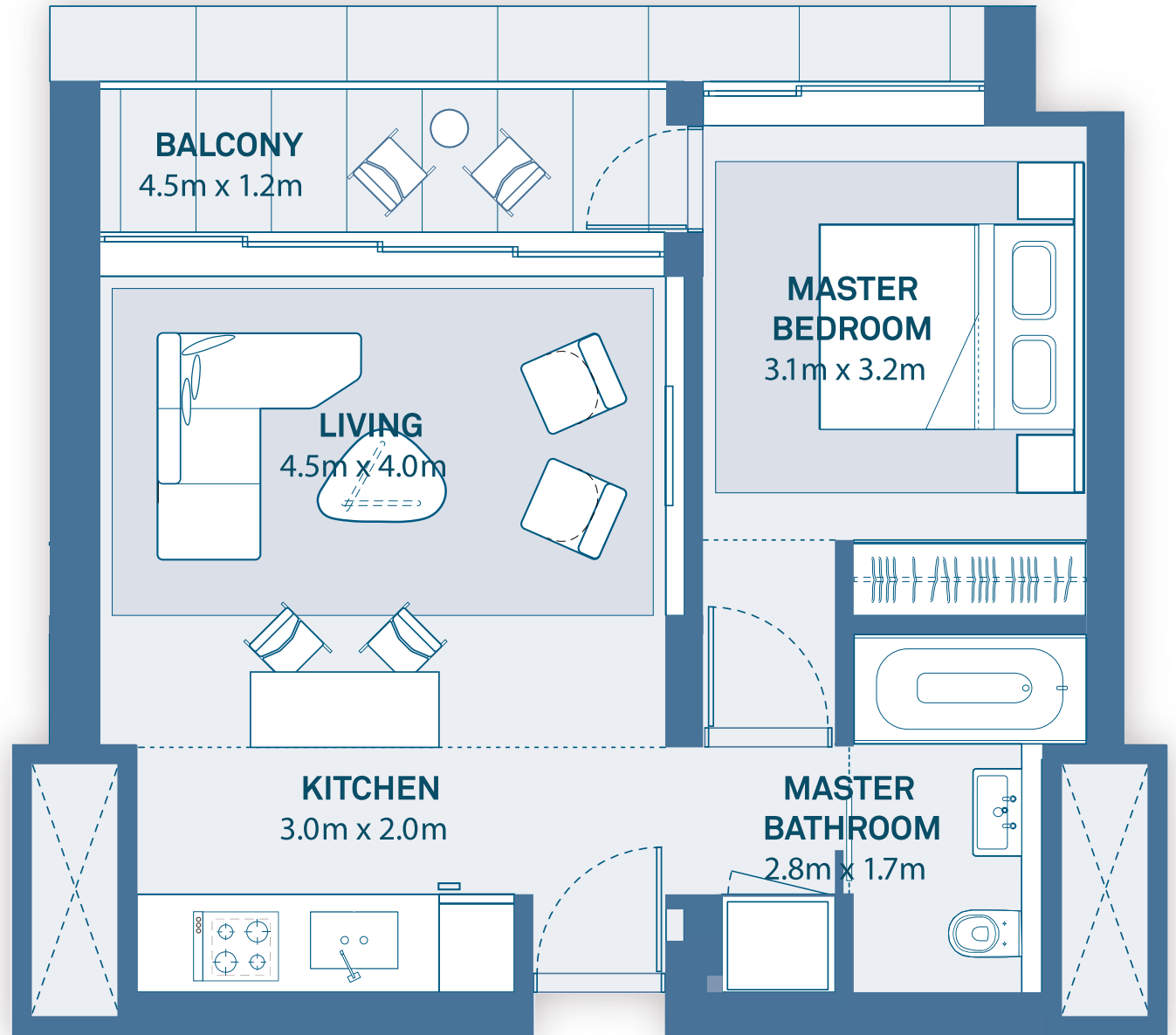
Blue – Displayed Floor Plan  
 Green – Mirrored Floor Plan

Disclaimer: 1. All room dimensions are measured to structural elements and exclude all finishes and construction tolerances. 2. All dimensions have been provided by our consultant architects. 3. All materials, dimensions and drawings are approximate. Information is subject to change without notice. 4. The attached plans are for marketing purposes only. Actual suite area may vary from the stated area. Drawings not to scale. The developer reserves the right to make revisions. 5. The suite area is measured as the area bounded by the centerlines of demising of party walls separating one unit from another unit, the centerline surface of the exterior walls, and the centerline surface of the corridor wall enclosing and abutting the Unit. 6. The balcony area is measured as the area bounded by the inner face of a solid masonry demising or party walls separating one unit from another unit, the centerline of the enclosing guard and the centerline of the suite abutting the balcony. Where a balcony is split to service two adjacent units and the split is constructed using a glazed panel, the balcony area of each unit is measured to the centerline of the glazed panel. 7. The units are measured at typical floor in the building. Columns may vary in size depending on the floor level.

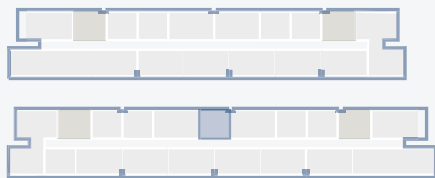
**TYPICAL 1 BEDROOM  
 NORTHERLY ASPECT**

Residential Tower 2  
 Level 2 - Level 9

Suite Area	55 sq. m
Balcony Area	5 sq. m
Total Area	60 sq. m



**KEY PLAN**



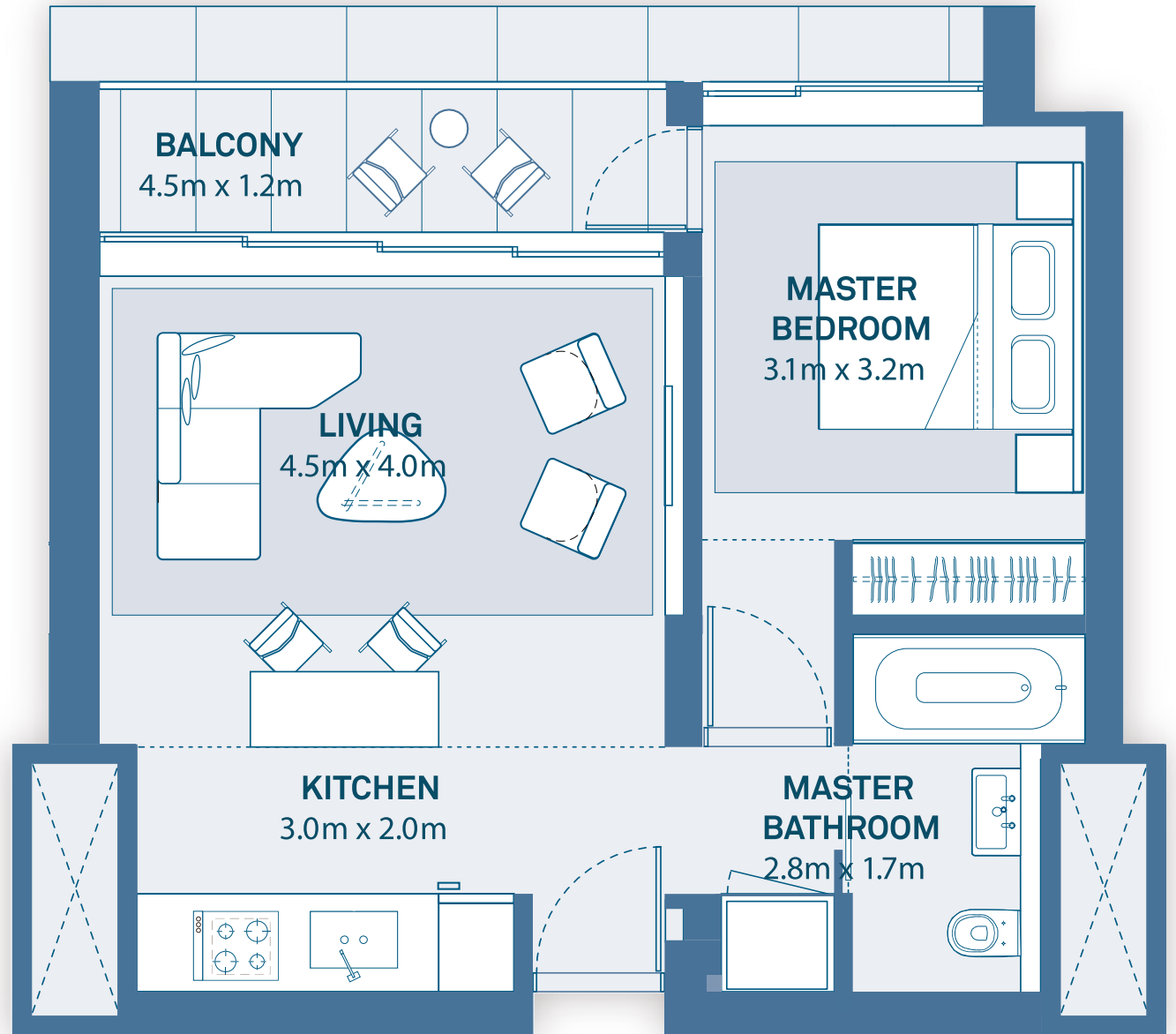
Blue – Displayed Floor Plan  
 Green – Mirrored Floor Plan

Disclaimer: 1. All room dimensions are measured to structural elements and exclude all finishes and construction tolerances. 2. All dimensions have been provided by our consultant architects. 3. All materials, dimensions and drawings are approximate. Information is subject to change without notice. 4. The attached plans are for marketing purposes only. Actual suite area may vary from the stated area. Drawings not to scale. The developer reserves the right to make revisions. 5. The suite area is measured as the area bounded by the centerlines of demising of party walls separating one unit from another unit, the centerline surface of the exterior walls, and the centerline surface of the corridor wall enclosing and abutting the Unit. 6. The balcony area is measured as the area bounded by the inner face of a solid masonry demising or party walls separating one unit from another unit, the centerline of the enclosing guard and the centerline of the suite abutting the balcony. Where a balcony is split to service two adjacent units and the split is constructed using a glazed panel, the balcony area of each unit is measured to the centerline of the glazed panel. 7. The units are measured at typical floor in the building. Columns may vary in size depending on the floor level.

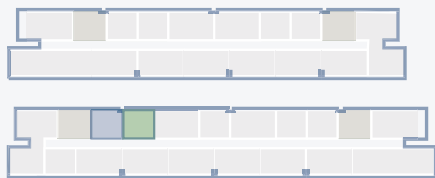
**TYPICAL 1 BEDROOM  
 NORTHERLY ASPECT**

Residential Towers 2  
 Level 2 - Level 8

Suite Area	55 sq. m
Balcony Area	5 sq. m
Total Area	60 sq. m



**KEY PLAN**



Blue – Displayed Floor Plan  
 Green – Mirrored Floor Plan

Disclaimer: 1. All room dimensions are measured to structural elements and exclude all finishes and construction tolerances. 2. All dimensions have been provided by our consultant architects. 3. All materials, dimensions and drawings are approximate. Information is subject to change without notice. 4. The attached plans are for marketing purposes only. Actual suite area may vary from the stated area. Drawings not to scale. The developer reserves the right to make revisions. 5. The suite area is measured as the area bounded by the centerlines of demising of party walls separating one unit from another unit, the centerline surface of the exterior walls, and the centerline surface of the corridor wall enclosing and abutting the Unit. 6. The balcony area is measured as the area bounded by the inner face of a solid masonry demising or party walls separating one unit from another unit, the centerline of the enclosing guard and the centerline of the suite abutting the balcony. Where a balcony is split to service two adjacent units and the split is constructed using a glazed panel, the balcony area of each unit is measured to the centerline of the glazed panel. 7. The units are measured at typical floor in the building. Columns may vary in size depending on the floor level.

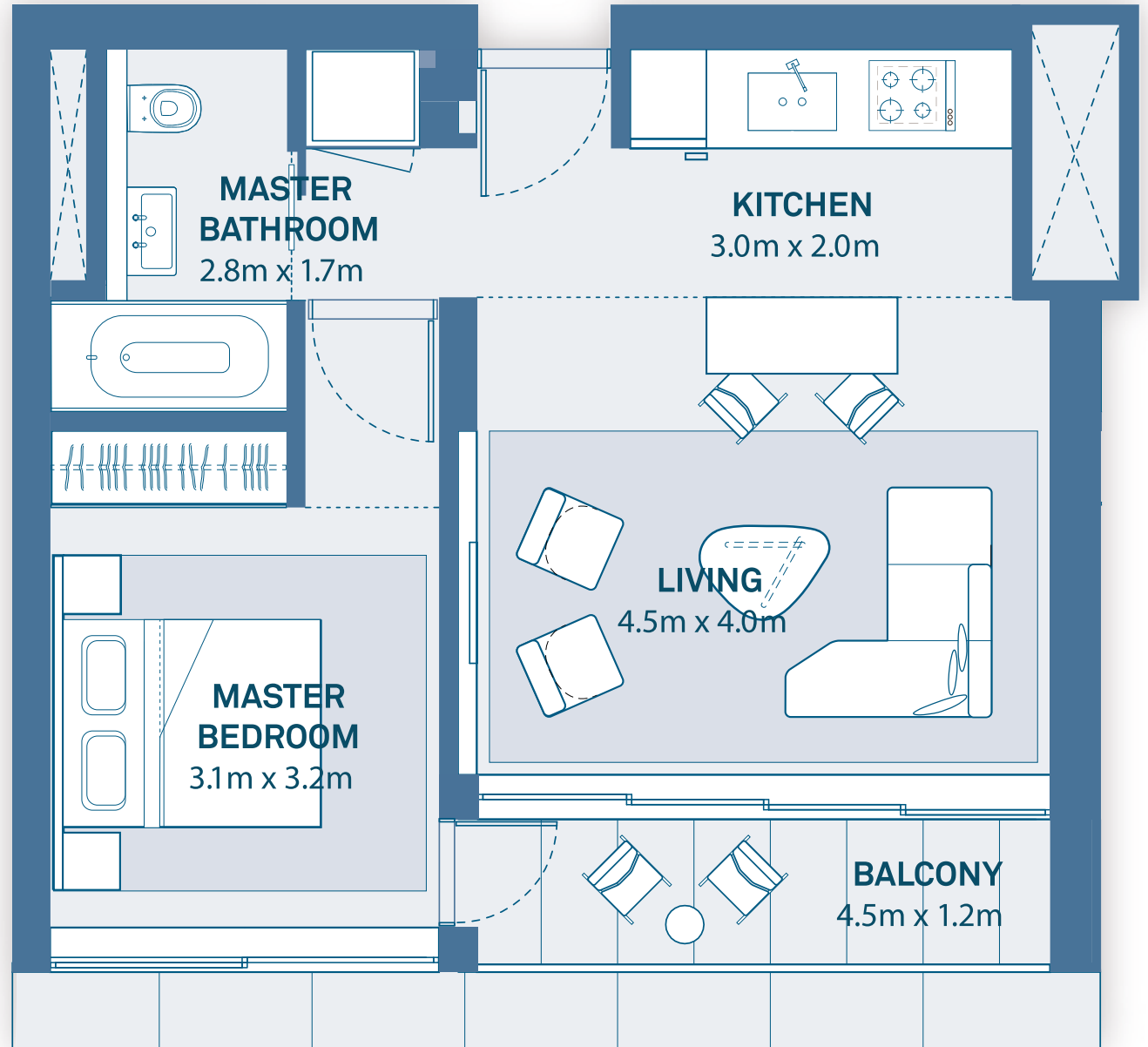
**TYPICAL 1 BEDROOM  
 SOUTHERLY ASPECT**

Residential Tower 2  
 Level 3 - Level 9

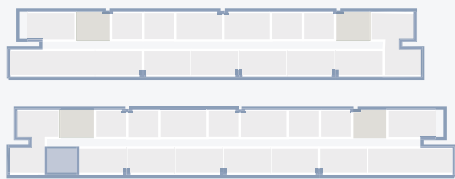
Suite Area 55 sq. m

Balcony Area 5 sq. m

Total Area 60 sq. m



**KEY PLAN**



Blue – Displayed Floor Plan  
 Green – Mirrored Floor Plan

Disclaimer: 1. All room dimensions are measured to structural elements and exclude all finishes and construction tolerances. 2. All dimensions have been provided by our consultant architects. 3. All materials, dimensions and drawings are approximate. Information is subject to change without notice. 4. The attached plans are for marketing purposes only. Actual suite area may vary from the stated area. Drawings not to scale. The developer reserves the right to make revisions. 5. The suite area is measured as the area bounded by the centerlines of demising of party walls separating one unit from another unit, the centerline surface of the exterior walls, and the centerline surface of the corridor wall enclosing and abutting the Unit. 6. The balcony area is measured as the area bounded by the inner face of a solid masonry demising or party walls separating one unit from another unit, the centerline of the enclosing guard and the centerline of the suite abutting the balcony. Where a balcony is split to service two adjacent units and the split is constructed using a glazed panel, the balcony area of each unit is measured to the centerline of the glazed panel. 7. The units are measured at typical floor in the building. Columns may vary in size depending on the floor level.

**TYPICAL 1 BEDROOM  
 SOUTHERLY ASPECT**

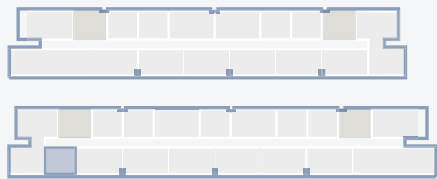
Residential Tower 2 - Terrace  
 Level 2

Suite Area 55 sq. m

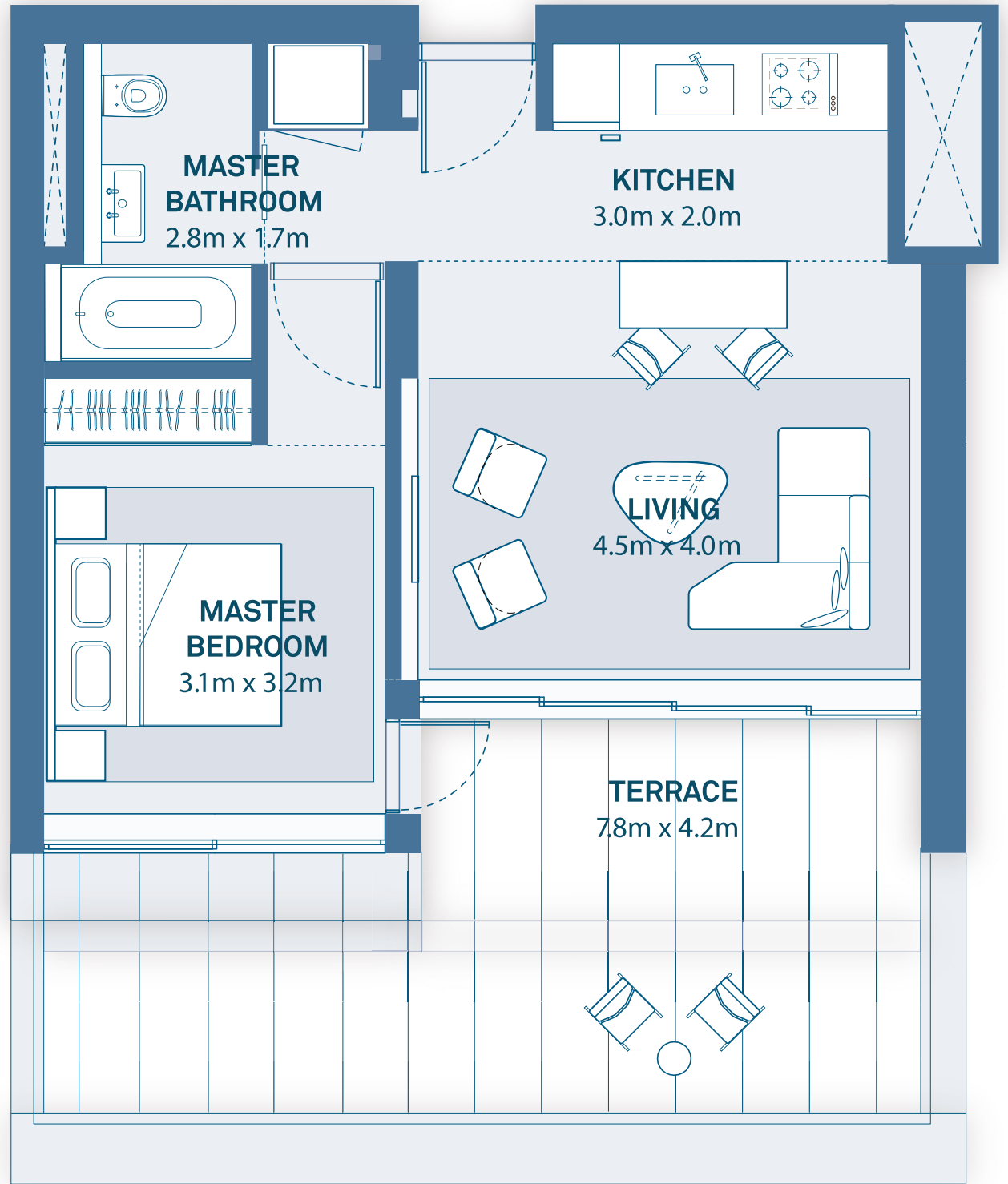
Balcony Area 30 sq. m

Total Area 85 sq. m

**KEY PLAN**



Blue – Displayed Floor Plan  
 Green – Mirrored Floor Plan

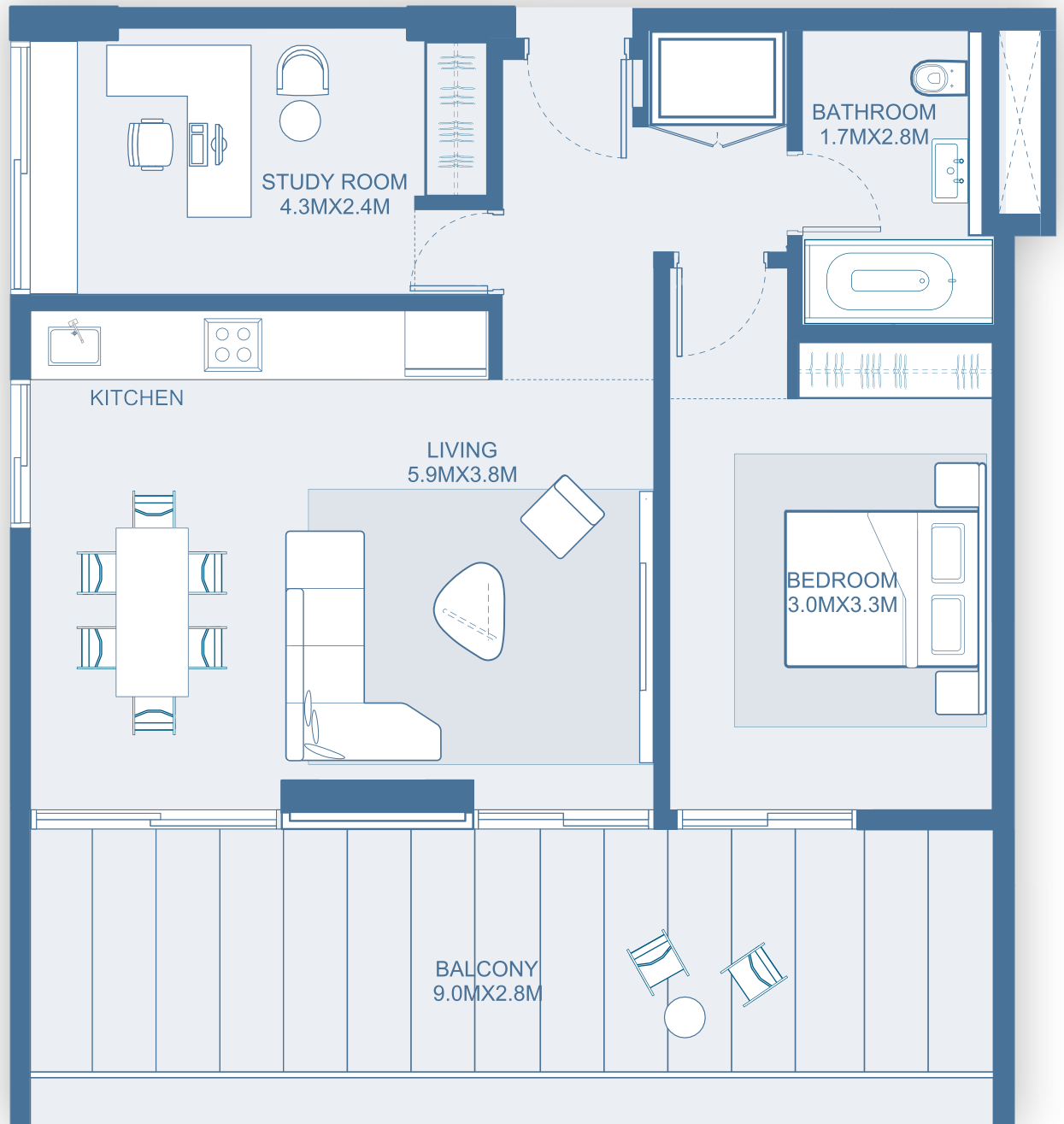


Disclaimer: 1. All room dimensions are measured to structural elements and exclude all finishes and construction tolerances. 2. All dimensions have been provided by our consultant architects. 3. All materials, dimensions and drawings are approximate. Information is subject to change without notice. 4. The attached plans are for marketing purposes only. Actual suite area may vary from the stated area. Drawings not to scale. The developer reserves the right to make revisions. 5. The suite area is measured as the area bounded by the centerlines of demising of party walls separating one unit from another unit, the centerline surface of the exterior walls, and the centerline surface of the corridor wall enclosing and abutting the Unit. 6. The balcony area is measured as the area bounded by the inner face of a solid masonry demising or party walls separating one unit from another unit, the centerline of the enclosing guard and the centerline of the suite abutting the balcony. Where a balcony is split to service two adjacent units and the split is constructed using a glazed panel, the balcony area of each unit is measured to the centerline of the glazed panel. 7. The units are measured at typical floor in the building. Columns may vary in size depending on the floor level.

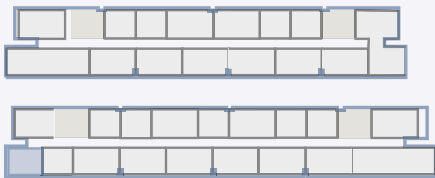
**TYPICAL 1 BEDROOM  
 NORTHERLY ASPECT**

Residential Tower 2  
 Level 2

Suite Area	72 sq. m
Balcony Area	6 sq. m
Total Area	98 sq. m



**KEY PLAN**



Blue – Displayed Floor Plan  
 Green – Mirrored Floor Plan

Disclaimer: 1. All room dimensions are measured to structural elements and exclude all finishes and construction tolerances. 2. All dimensions have been provided by our consultant architects. 3. All materials, dimensions and drawings are approximate. Information is subject to change without notice. 4. The attached plans are for marketing purposes only. Actual suite area may vary from the stated area. Drawings not to scale. The developer reserves the right to make revisions. 5. The suite area is measured as the area bounded by the centerlines of demising of party walls separating one unit from another unit, the centerline surface of the exterior walls, and the centerline surface of the corridor wall enclosing and abutting the Unit. 6. The balcony area is measured as the area bounded by the inner face of a solid masonry demising or party walls separating one unit from another unit, the centerline of the enclosing guard and the centerline of the suite abutting the balcony. Where a balcony is split to service two adjacent units and the split is constructed using a glazed panel, the balcony area of each unit is measured to the centerline of the glazed panel. 7. The units are measured at typical floor in the building. Columns may vary in size depending on the floor level.