



# THE ADDRESS

RESIDENCES  
MARASSI AL BAHRAIN

## THREE BEDROOM TYPE 01

SUITE AREA 131 sqm

BALCONY AREA 13 sqm

TOTAL AREA 144 sqm

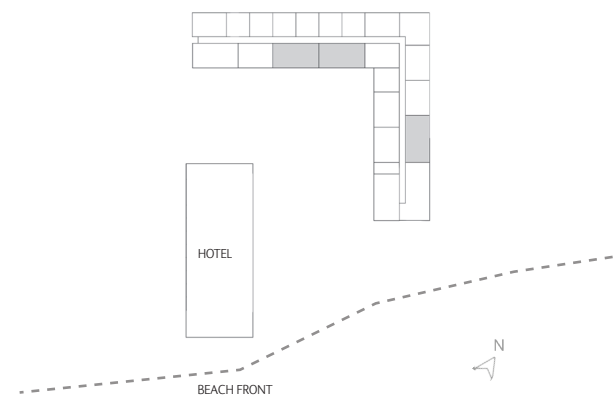
Disclaimer: 1. All room dimensions are measured to structural elements and exclude all finishes and construction tolerances. 2. All dimensions have been provided by our consultant architects. 3. All materials, dimensions and drawings are approximate. Information is subject to change without notice. 4. The attached plans are for marketing purposes only. Actual suite area may vary from the stated area. Drawings not to scale. The developer reserves the right to make revisions. 5. The suite area is measured as the area bounded by the centrelines of demising or party walls separating one unit from another unit, the centreline surface of the exterior walls, and the centreline surface of the corridor wall enclosing and abutting the Unit. 6. The balcony area is measured as the area bounded by the inner face of a solid masonry demising or party walls separating one unit from another unit, the centreline of the enclosing guard and the centreline of the suite abutting the balcony. Where a balcony is split to service two adjacent units and the split is constructed using a glazed panel, the balcony area of each unit is measured to the centreline of the glazed panel. 7. The units are measured at typical floor in the building. Columns may vary in size depending on the floor level.



مراسي البحرين  
MARASSI AL BAHRAIN



EAGLE  
HILLS





# THE ADDRESS

RESIDENCES  
MARASSI AL BAHRAIN

## THREE BEDROOM TYPE 02

SUITE AREA 133 sqm

BALCONY AREA 26 sqm

TOTAL AREA 159 sqm

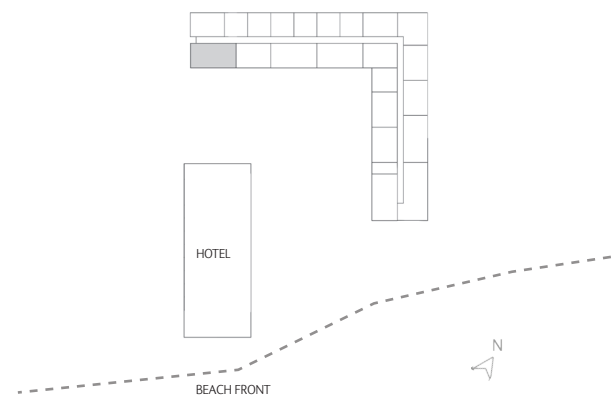
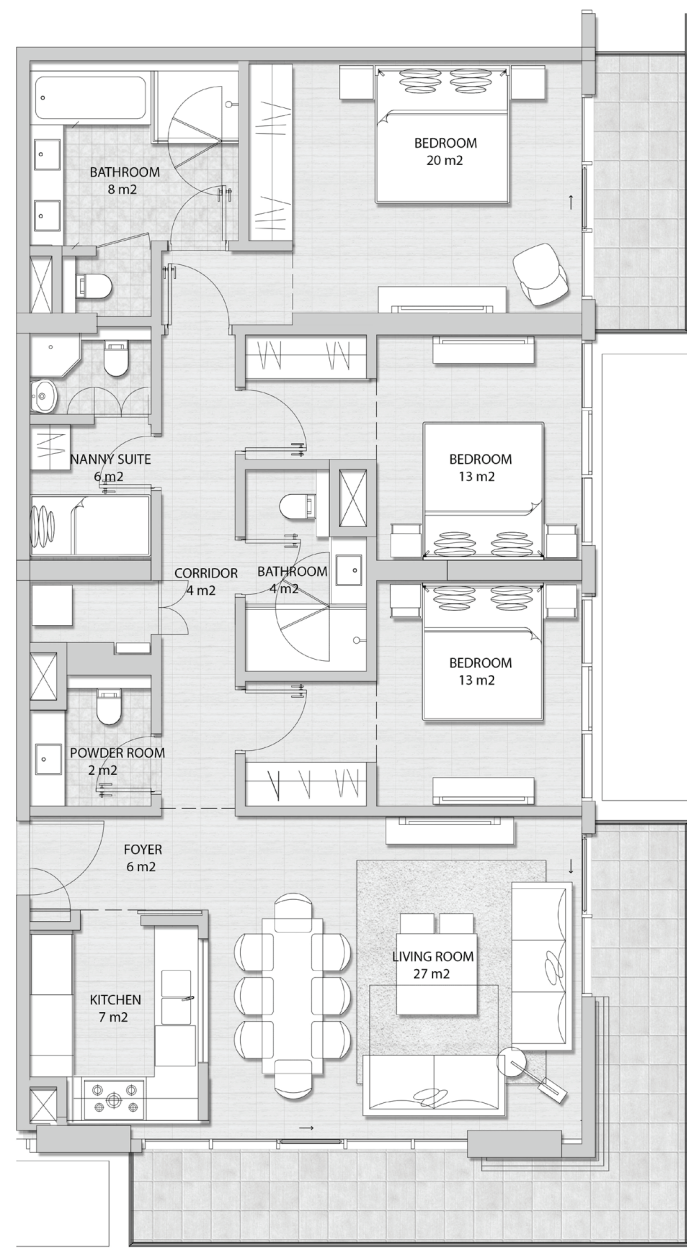
Disclaimer: 1. All room dimensions are measured to structural elements and exclude all finishes and construction tolerances. 2. All dimensions have been provided by our consultant architects. 3. All materials, dimensions and drawings are approximate. Information is subject to change without notice. 4. The attached plans are for marketing purposes only. Actual suite area may vary from the stated area. Drawings not to scale. The developer reserves the right to make revisions. 5. The suite area is measured as the area bounded by the centrelines of demising of party walls separating one unit from another unit, the centreline surface of the exterior walls, and the centreline surface of the corridor wall enclosing and abutting the Unit. 6. The balcony area is measured as the area bounded by the inner face of a solid masonry demising or party walls separating one unit from another unit, the centreline of the enclosing guard and the centreline of the suite abutting the balcony. Where a balcony is split to service two adjacent units and the split is constructed using a glazed panel, the balcony area of each unit is measured to the centreline of the glazed panel. 7. The units are measured at typical floor in the building. Columns may vary in size depending on the floor level.



مراسي البحرين  
MARASSI AL BAHRAIN



EAGLE  
HILLS





# THE ADDRESS

RESIDENCES  
MARASSI AL BAHRAIN

## THREE BEDROOM TYPE 03

SUITE AREA 130 sqm

BALCONY AREA 27 sqm

TOTAL AREA 157 sqm

Disclaimer: 1. All room dimensions are measured to structural elements and exclude all finishes and construction tolerances. 2. All dimensions have been provided by our consultant architects. 3. All materials, dimensions and drawings are approximate. Information is subject to change without notice. 4. The attached plans are for marketing purposes only. Actual suite area may vary from the stated area. Drawings not to scale. The developer reserves the right to make revisions. 5. The suite area is measured as the area bounded by the centrelines of demising or party walls separating one unit from another unit, the centreline surface of the exterior walls, and the centreline surface of the corridor wall enclosing and abutting the Unit. 6. The balcony area is measured as the area bounded by the inner face of a solid masonry demising or party walls separating one unit from another unit, the centreline of the enclosing guard and the centreline of the suite abutting the balcony. Where a balcony is split to service two adjacent units and the split is constructed using a glazed panel, the balcony area of each unit is measured to the centreline of the glazed panel. 7. The units are measured at typical floor in the building. Columns may vary in size depending on the floor level.



مراسي البحرين  
MARASSI AL BAHRAIN



EAGLE  
HILLS

