



# THE ADDRESS

RESIDENCES

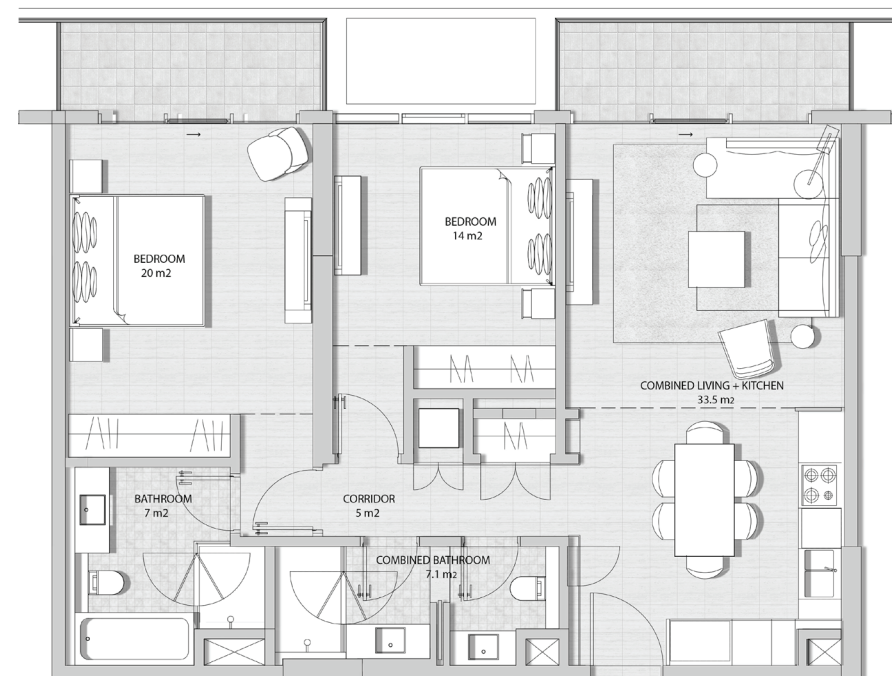
MARASSI AL BAHRAIN

## TWO BEDROOM TYPE 01

SUITE AREA 98 sqm

BALCONY AREA 13 sqm

TOTAL AREA 111 sqm



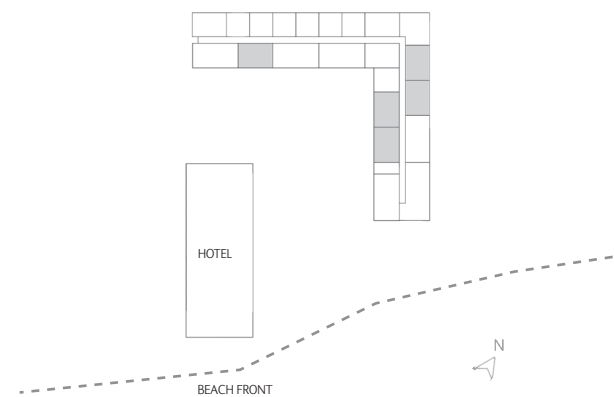
Disclaimer: 1. All room dimensions are measured to structural elements and exclude all finishes and construction tolerances. 2. All dimensions have been provided by our consultant architects. 3. All materials, dimensions and drawings are approximate. Information is subject to change without notice. 4. The attached plans are for marketing purposes only. Actual suite area may vary from the stated area. Drawings not to scale. The developer reserves the right to make revisions. 5. The suite area is measured as the area bounded by the centrelines of demising or party walls separating one unit from another unit, the centreline surface of the exterior walls, and the centreline surface of the corridor wall enclosing and abutting the Unit. 6. The balcony area is measured as the area bounded by the inner face of a solid masonry demising or party walls separating one unit from another unit, the centreline of the enclosing guard and the centreline of the suite abutting the balcony. Where a balcony is split to service two adjacent units and the split is constructed using a glazed panel, the balcony area of each unit is measured to the centreline of the glazed panel. 7. The units are measured at typical floor in the building. Columns may vary in size depending on the floor level.



مراسي البحرين  
MARASSI AL BAHRAIN



EAGLE  
HILLS





# THE ADDRESS

RESIDENCES

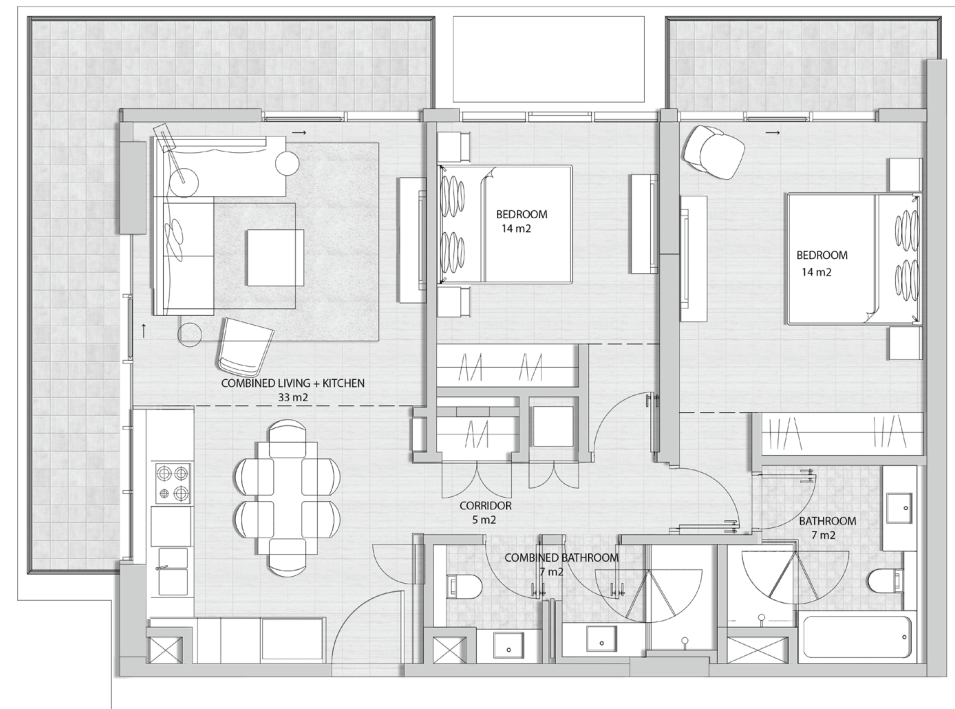
MARASSI AL BAHRAIN

## TWO BEDROOM TYPE 02

SUITE AREA 102 sqm

BALCONY AREA 25 sqm

TOTAL AREA 127 sqm



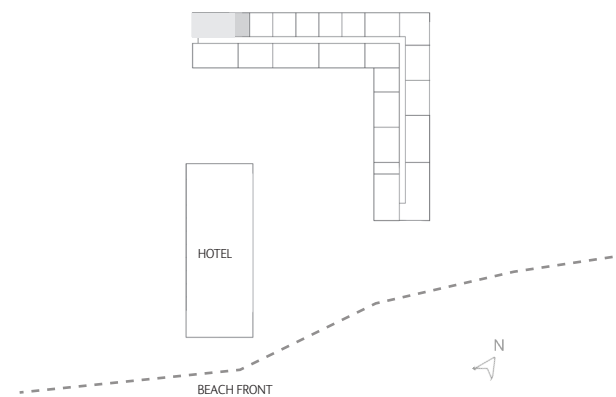
Disclaimer: 1. All room dimensions are measured to structural elements and exclude all finishes and construction tolerances. 2. All dimensions have been provided by our consultant architects. 3. All materials, dimensions and drawings are approximate. Information is subject to change without notice. 4. The attached plans are for marketing purposes only. Actual suite area may vary from the stated area. Drawings not to scale. The developer reserves the right to make revisions. 5. The suite area is measured as the area bounded by the centrelines of demising or party walls separating one unit from another unit, the centreline surface of the exterior walls, and the centreline surface of the corridor wall enclosing and abutting the Unit. 6. The balcony area is measured as the area bounded by the inner face of a solid masonry demising or party walls separating one unit from another unit, the centreline of the enclosing guard and the centreline of the suite abutting the balcony. Where a balcony is split to service two adjacent units and the split is constructed using a glazed panel, the balcony area of each unit is measured to the centreline of the glazed panel. 7. The units are measured at typical floor in the building. Columns may vary in size depending on the floor level.



مراسي البحرين  
MARASSI AL BAHRAIN



EAGLE  
HILLS





# THE ADDRESS

RESIDENCES

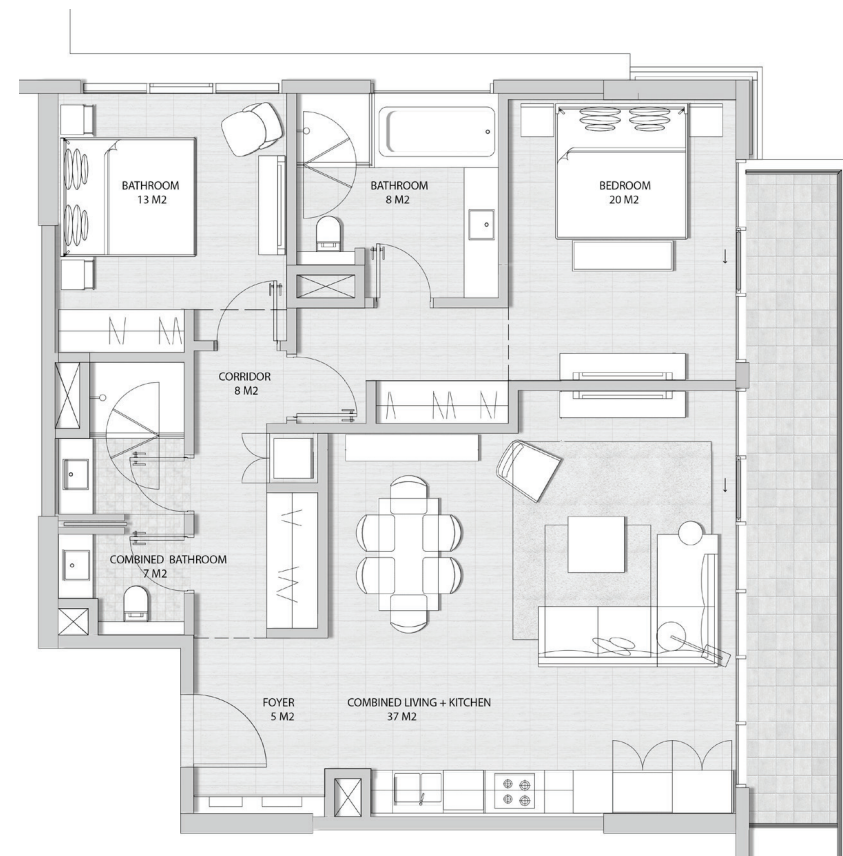
MARASSI AL BAHRAIN

## TWO BEDROOM TYPE 03

SUITE AREA 108 sqm

BALCONY AREA 15 sqm

TOTAL AREA 123 sqm



Disclaimer: 1. All room dimensions are measured to structural elements and exclude all finishes and construction tolerances. 2. All dimensions have been provided by our consultant architects. 3. All materials, dimensions and drawings are approximate. Information is subject to change without notice. 4. The attached plans are for marketing purposes only. Actual suite area may vary from the stated area. Drawings not to scale. The developer reserves the right to make revisions. 5. The suite area is measured as the area bounded by the centrelines of demising or party walls separating one unit from another unit, the centreline surface of the exterior walls, and the centreline surface of the corridor wall enclosing and abutting the Unit. 6. The balcony area is measured as the area bounded by the inner face of a solid masonry demising or party walls separating one unit from another unit, the centreline of the enclosing guard and the centreline of the suite abutting the balcony. Where a balcony is split to service two adjacent units and the split is constructed using a glazed panel, the balcony area of each unit is measured to the centreline of the glazed panel. 7. The units are measured at typical floor in the building. Columns may vary in size depending on the floor level.



مراسي البحرين  
MARASSI AL BAHRAIN



EAGLE  
HILLS

