

# MR

مراسي رزیدنسز  
Marassi Residences

## TYPICAL 1 BEDROOM NORTHERLY ASPECT

Residential Towers 1,2

Tower 1: Level 1 - Level 8

Tower 2: Level 2 - Level 8

Suite Area 55 sq. m

Balcony Area 5 sq. m

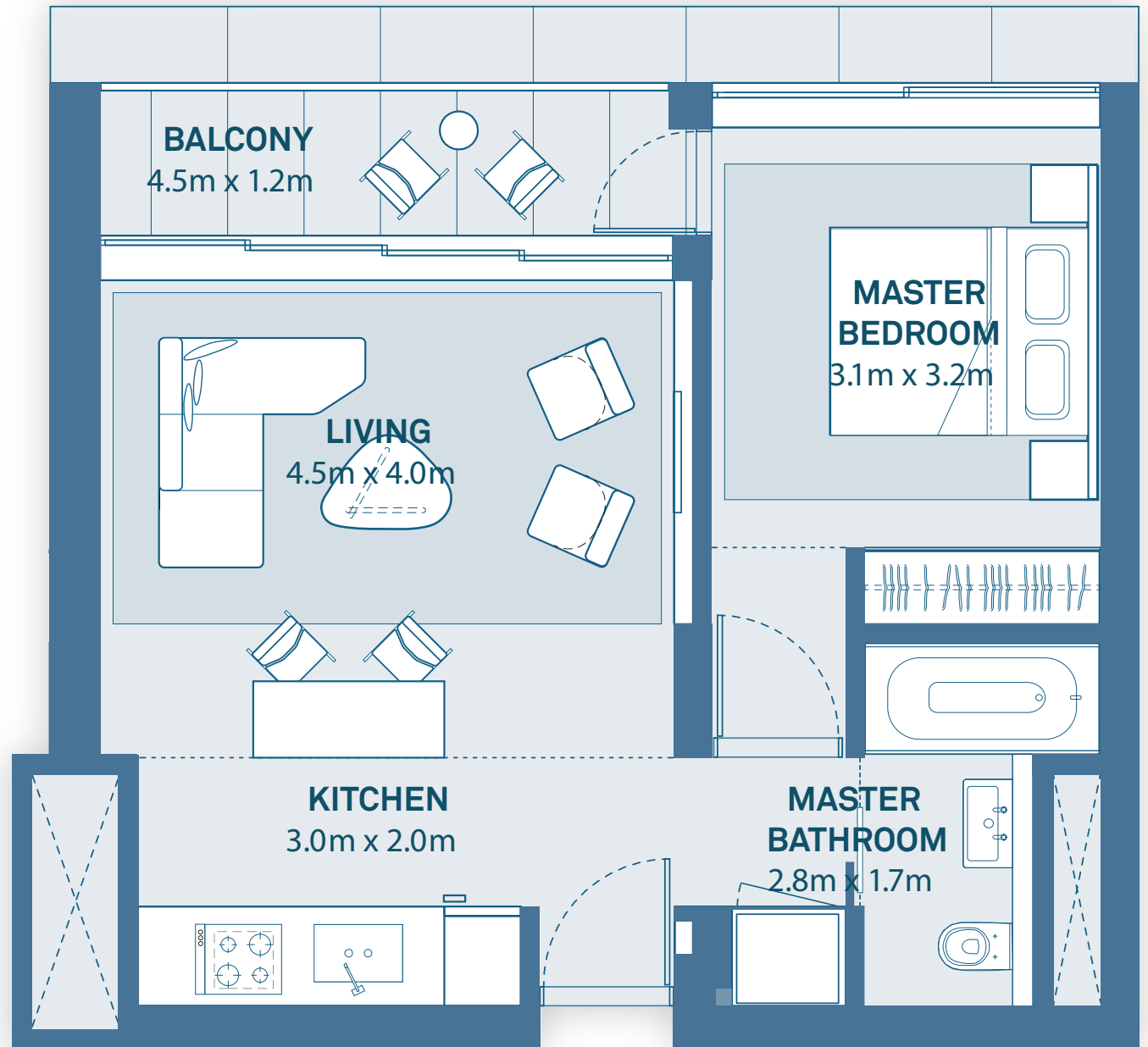
Total Area 60 sq. m

### KEY PLAN



Blue – Displayed Floor Plan

Green – Mirrored Floor Plan



Disclaimer: 1. All room dimensions are measured to structural elements and exclude all finishes and construction tolerances. 2. All dimensions have been provided by our consultant architects. 3. All materials, dimensions and drawings are approximate. Information is subject to change without notice. 4. Actual suite area may vary from the stated area. The developer reserves the right to make revisions. 5. Calculation of suite area is measured as the area bounded by the centre line of the demising or partition walls separating one unit from another unit, the exterior face of all exterior walls, and the exterior face of the corridor wall enclosing the adjoining unit. 6. Calculation of balcony area is measured as the area bounded by the centre line of the demising or partition walls separating one unit from another unit, the outmost face of the enclosing guard and the external face of the unit adjoining the balcony. 7. The units are measured at typical floor in the building. Columns may vary in size depending on the floor level.



مراسي البحرين  
MARASSI AL BAHRAIN

# MR

مراسي رزیدنسز  
Marassi Residences

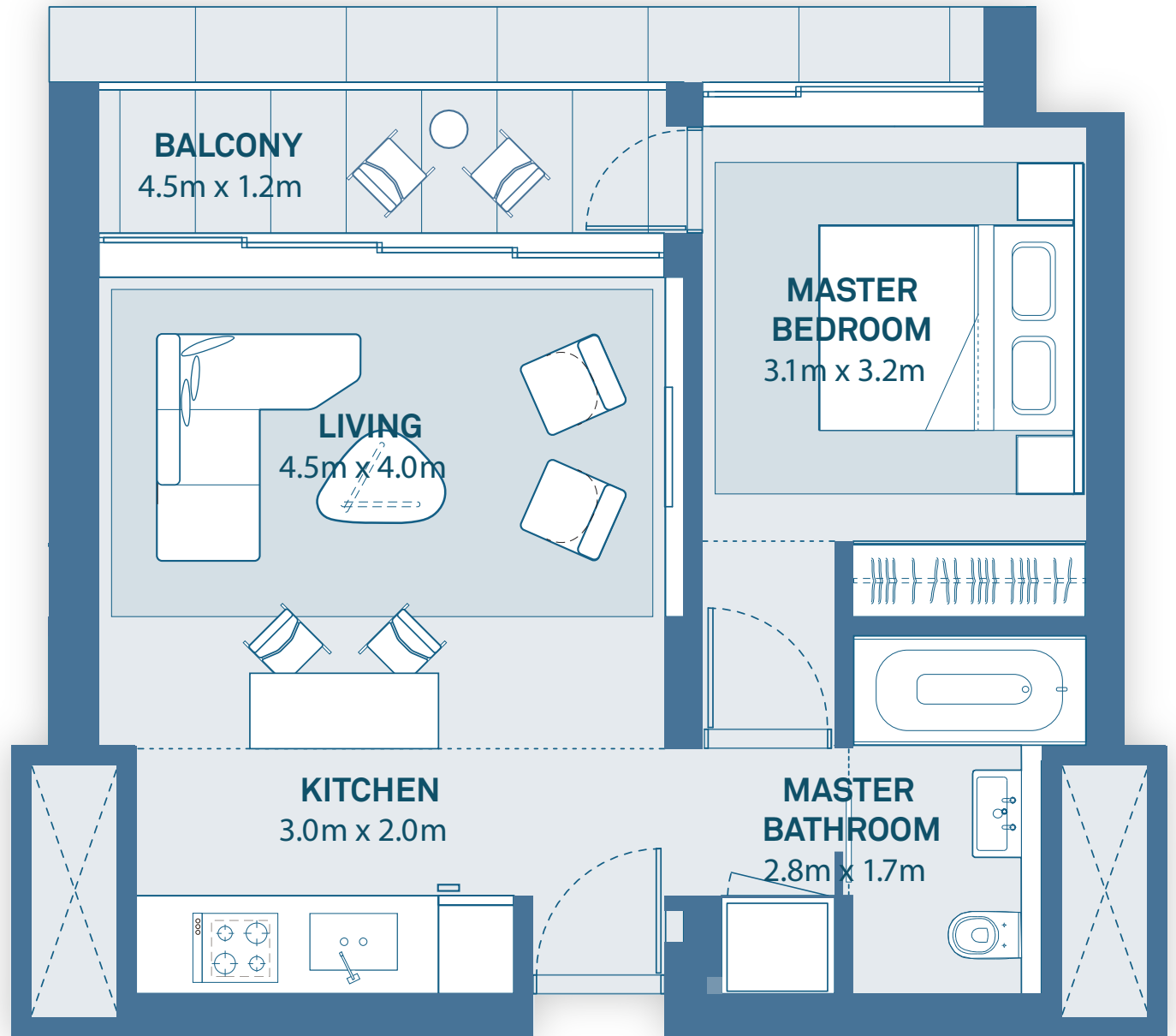
## TYPICAL 1 BEDROOM NORTHERLY ASPECT

Residential Tower 2  
Level 2 - Level 9

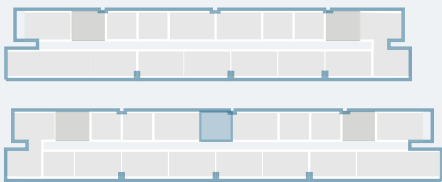
Suite Area 55 sq. m

Balcony Area 5 sq. m

Total Area 60 sq. m



### KEY PLAN



Blue – Displayed Floor Plan  
Green – Mirrored Floor Plan

Disclaimer: 1. All room dimensions are measured to structural elements and exclude all finishes and construction tolerances. 2. All dimensions have been provided by our consultant architects. 3. All materials, dimensions and drawings are approximate. Information is subject to change without notice. 4. Actual suite area may vary from the stated area. Drawings not to scale. The developer reserves the right to make revisions. 5. Calculation of suite area is measured as the area bounded by the centre line of the demising or partition walls separating one unit from another unit, the exterior face of all exterior walls, and the exterior face of the corridor wall enclosing the adjoining unit. 6. Calculation of balcony area is measured as the area bounded by the centre line of the demising or partition walls separating one unit from another unit, the outmost face of the enclosing guard and the external face of the unit adjoining the balcony. 7. The units are measured at typical floor in the building. Columns may vary in size depending on the floor level.



مراسي البحرين  
MARASSI AL BAHRAIN

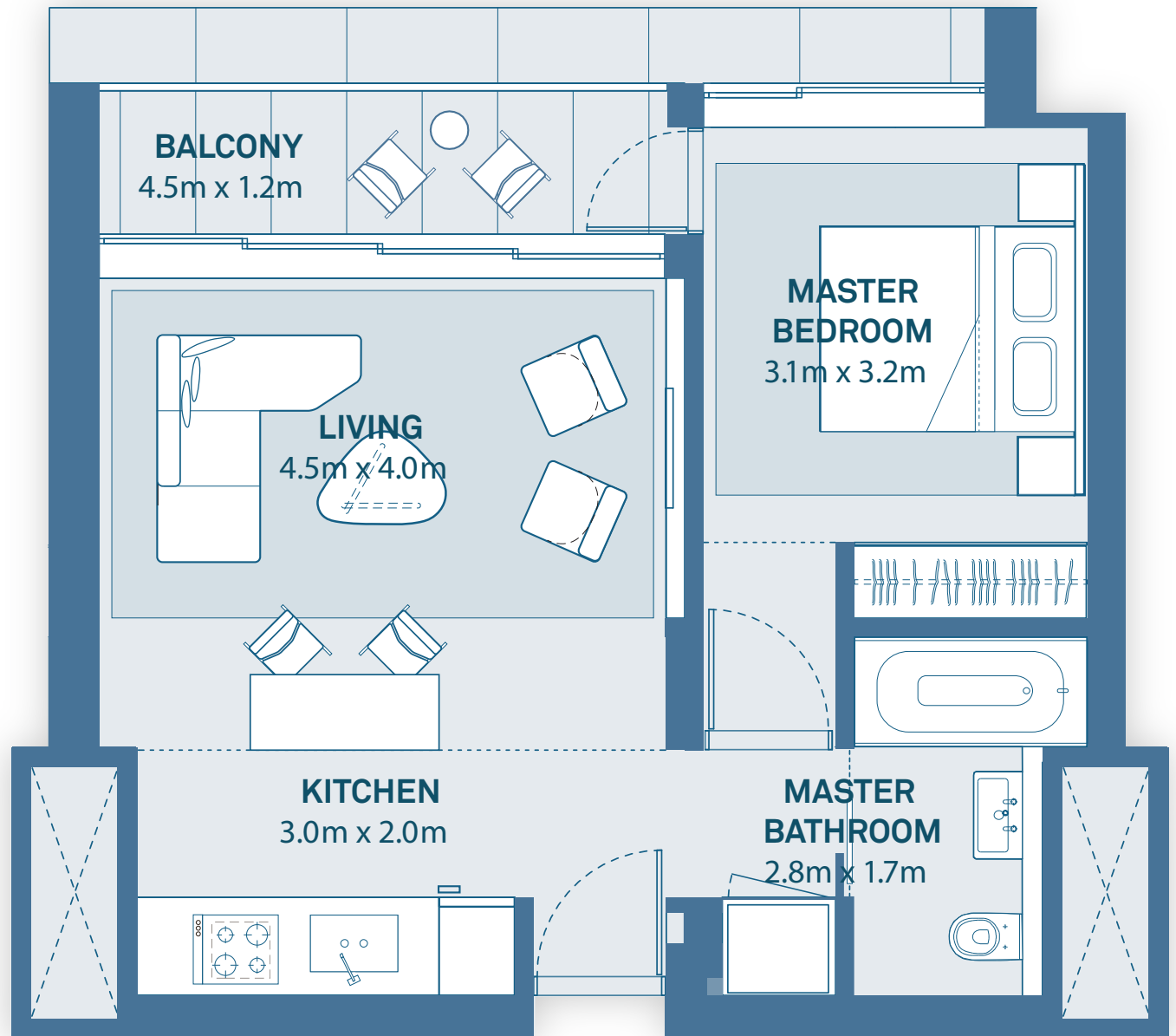
# MR

مراسي رزیدنسز  
Marassi Residences

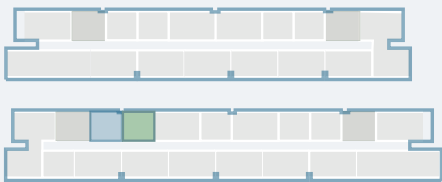
## TYPICAL 1 BEDROOM NORTHERLY ASPECT

Residential Towers 2  
Level 2 - Level 8

Suite Area	55 sq. m
Balcony Area	5 sq. m
Total Area	60 sq. m



### KEY PLAN



Blue – Displayed Floor Plan  
Green – Mirrored Floor Plan

Disclaimer: 1. All room dimensions are measured to structural elements and exclude all finishes and construction tolerances. 2. All dimensions have been provided by our consultant architects. 3. All materials, dimensions and drawings are approximate. Information is subject to change without notice. 4. Actual suite area may vary from the stated area. Drawings not to scale. The developer reserves the right to make revisions. 5. Calculation of suite area is measured as the area bounded by the centre line of the demising or partition walls separating one unit from another unit, the exterior face of all exterior walls, and the exterior face of the corridor wall enclosing the adjoining unit. 6. Calculation of balcony area is measured as the area bounded by the centre line of the demising or partition walls separating one unit from another unit, the outmost face of the enclosing guard and the external face of the unit adjoining the balcony. 7. The units are measured at typical floor in the building. Columns may vary in size depending on the floor level.

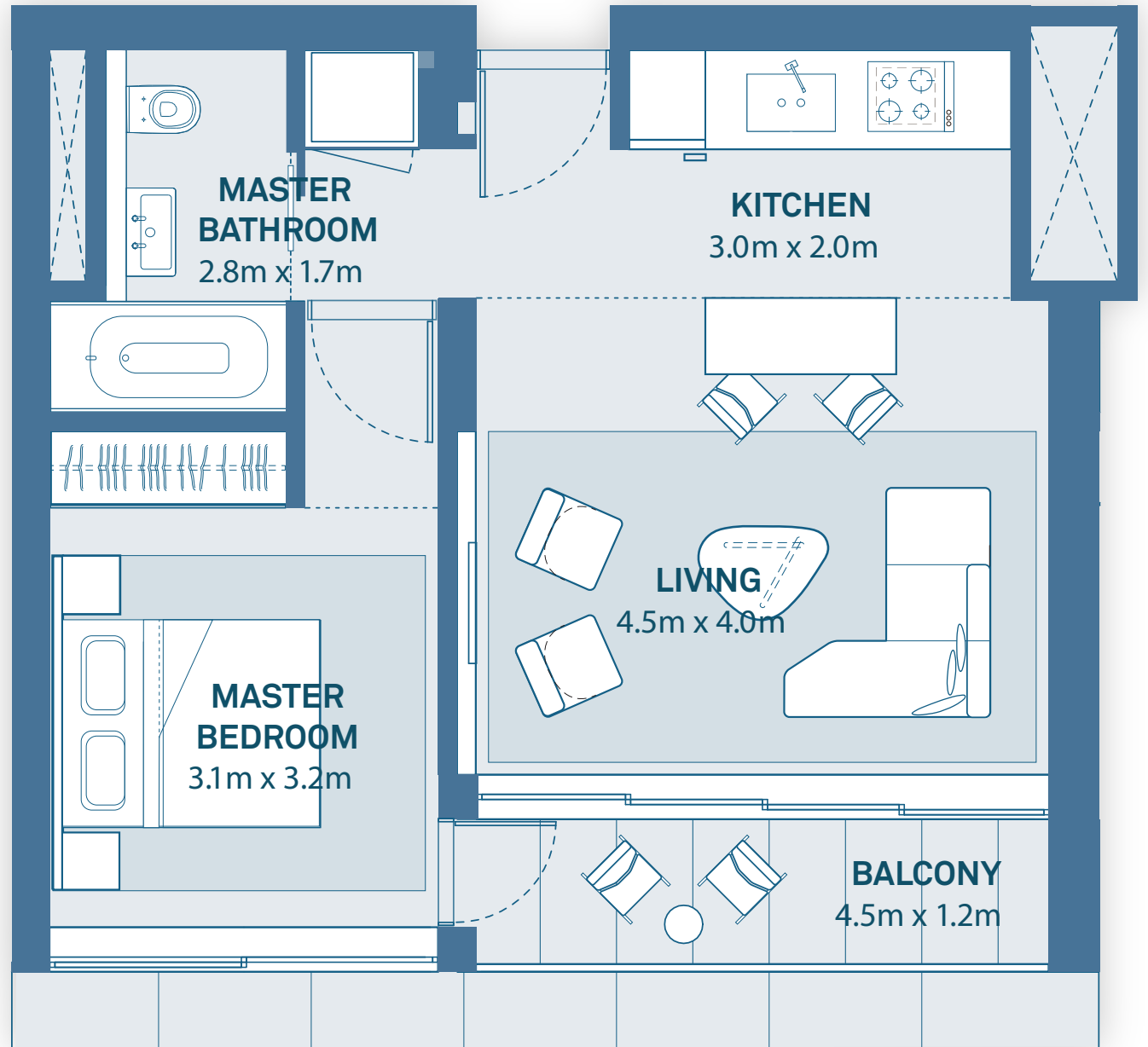


مراسي البحرين  
MARASSI AL BAHRAIN

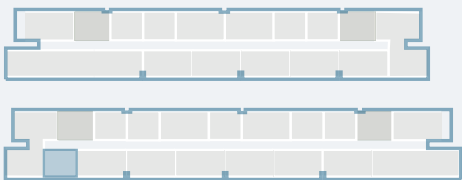
**TYPICAL 1 BEDROOM  
 SOUTHERLY ASPECT**

Residential Tower 2  
 Level 3 - Level 9

Suite Area	55 sq. m
Balcony Area	5 sq. m
Total Area	60 sq. m



**KEY PLAN**



Blue – Displayed Floor Plan  
 Green – Mirrored Floor Plan

Disclaimer: 1. All room dimensions are measured to structural elements and exclude all finishes and construction tolerances. 2. All dimensions have been provided by our consultant architects. 3. All materials, dimensions and drawings are approximate. Information is subject to change without notice. 4. Actual suite area may vary from the stated area. Drawings not to scale. The developer reserves the right to make revisions. 5. Calculation of suite area is measured as the area bounded by the centre line of the demising or partition walls separating one unit from another unit, the exterior face of all exterior walls, and the exterior face of the corridor wall enclosing the adjoining unit. 6. Calculation of balcony area is measured as the area bounded by the centre line of the demising or partition walls separating one unit from another unit, the outmost face of the enclosing guard and the external face of the unit adjoining the balcony. 7. The units are measured at typical floor in the building. Columns may vary in size depending on the floor level.

# MR

مراسي رزیدنسز  
Marassi Residences

## TYPICAL 1 BEDROOM SOUTHERLY ASPECT

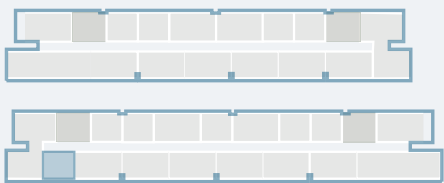
Residential Tower 2 - Terrace  
Level 2

Suite Area 55 sq. m

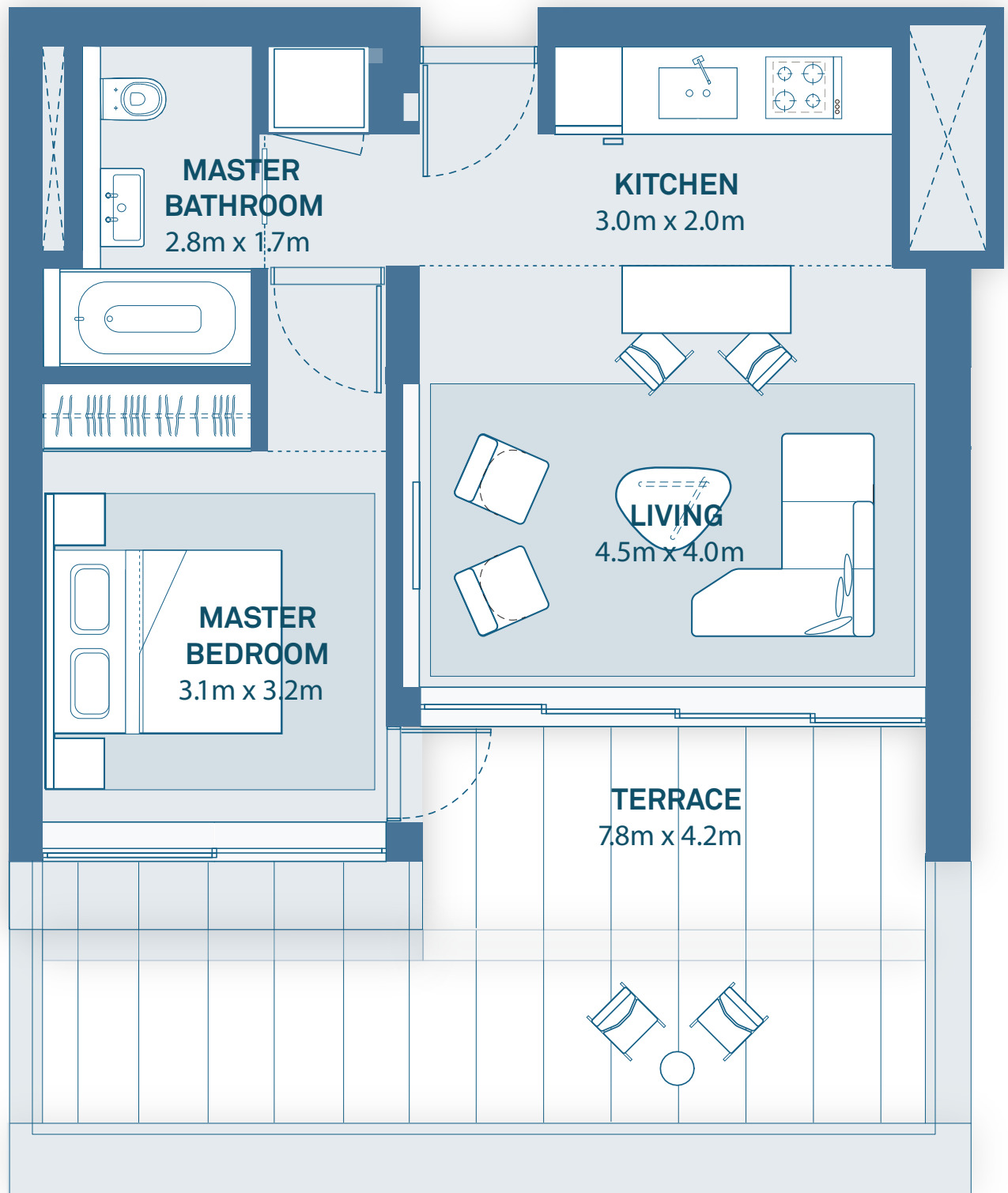
Balcony Area 30 sq. m

Total Area 85 sq. m

### KEY PLAN



Blue – Displayed Floor Plan  
Green – Mirrored Floor Plan



Disclaimer: 1. All room dimensions are measured to structural elements and exclude all finishes and construction tolerances. 2. All dimensions have been provided by our consultant architects. 3. All materials, dimensions and drawings are approximate. Information is subject to change without notice. 4. Actual suite area may vary from the stated area. Drawings not to scale. The developer reserves the right to make revisions. 5. Calculation of suite area is measured as the area bounded by the centre line of the demising or partition walls separating one unit from another unit, the exterior face of all exterior walls, and the exterior face of the corridor wall enclosing the adjoining unit. 6. Calculation of balcony area is measured as the area bounded by the centre line of the demising or partition walls separating one unit from another unit, the outmost face of the enclosing guard and the external face of the unit adjoining the balcony. 7. The units are measured at typical floor in the building. Columns may vary in size depending on the floor level.

EAGLE  
HILLS

مراسي البحرين  
MARASSI AL BAHRAIN

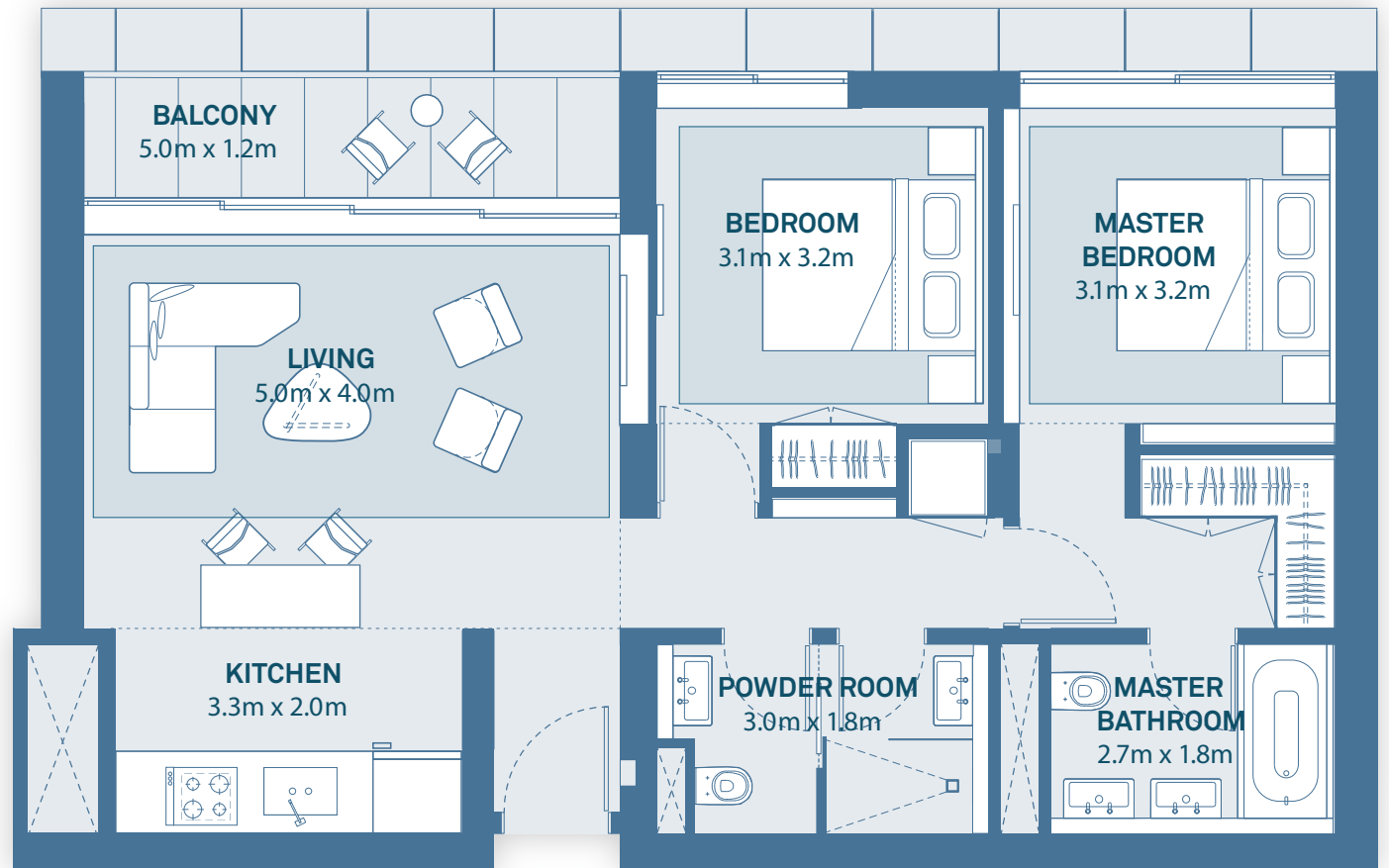
## TYPICAL 2 BEDROOM NORTHERLY ASPECT

Residential Tower 2  
 Level 2 - Level 9

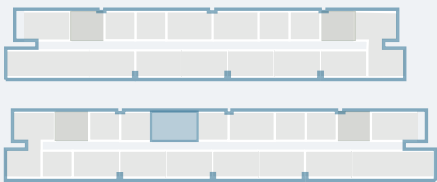
Suite Area 84.5 sq. m

Balcony Area 6 sq. m

Total Area 90.5 sq. m



### KEY PLAN



Blue – Displayed Floor Plan  
 Green – Mirrored Floor Plan

Disclaimer: 1. All room dimensions are measured to structural elements and exclude all finishes and construction tolerances. 2. All dimensions have been provided by our consultant architects. 3. All materials, dimensions and drawings are approximate. Information is subject to change without notice. 4. Actual suite area may vary from the stated area. Drawings not to scale. The developer reserves the right to make revisions. 5. Calculation of suite area is measured as the area bounded by the centre line of the demising or partition walls separating one unit from another unit, the exterior face of all exterior walls, and the exterior face of the corridor wall enclosing the adjoining unit. 6. Calculation of balcony area is measured as the area bounded by the centre line of the demising or partition walls separating one unit from another unit, the outmost face of the enclosing guard and the external face of the unit adjoining the balcony. 7. The units are measured at typical floor in the building. Columns may vary in size depending on the floor level.

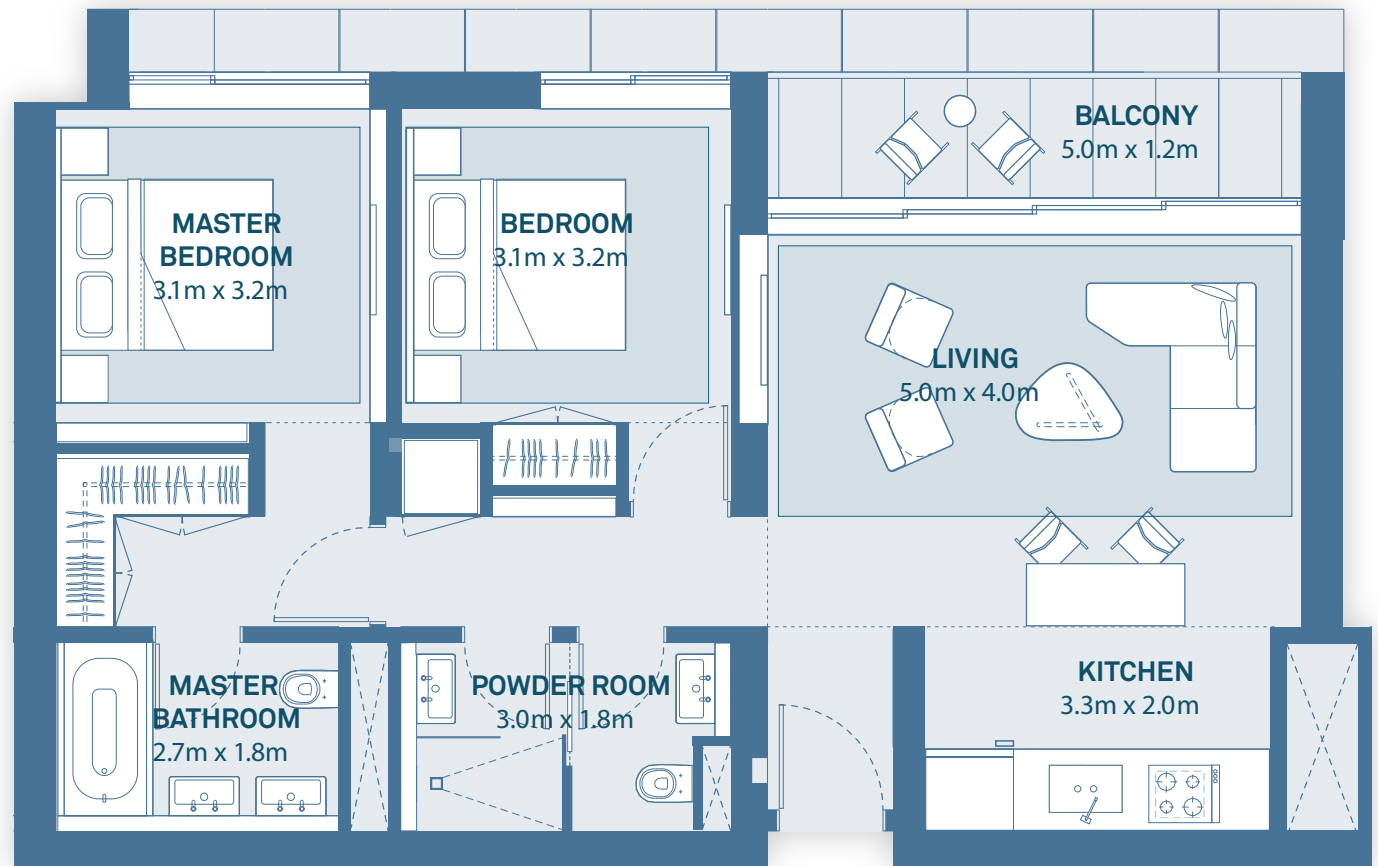
# MR

مراسي رزیدنسز  
Marassi Residences

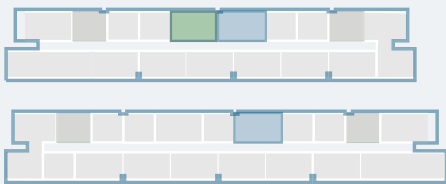
## TYPICAL 2 BEDROOM NORTHERLY ASPECT

Residential Towers 1,2  
Tower 1: Level 1 - Level 9  
Tower 2: Level 2 - Level 9

Suite Area	84.5 sq. m
Balcony Area	6 sq. m
Total Area	90.5 sq. m



## KEY PLAN



Blue – Displayed Floor Plan  
Green – Mirrored Floor Plan

Disclaimer: 1. All room dimensions are measured to structural elements and exclude all finishes and construction tolerances. 2. All dimensions have been provided by our consultant architects. 3. All materials, dimensions and drawings are approximate. Information is subject to change without notice. 4. Actual suite area may vary from the stated area. Drawings not to scale. The developer reserves the right to make revisions. 5. Calculation of suite area is measured as the area bounded by the centre line of the demising or partition walls separating one unit from another unit, the exterior face of all exterior walls, and the exterior face of the corridor wall enclosing the adjoining unit. 6. Calculation of balcony area is measured as the area bounded by the centre line of the demising or partition walls separating one unit from another unit, the outmost face of the enclosing guard and the external face of the unit adjoining the balcony. 7. The units are measured at typical floor in the building. Columns may vary in size depending on the floor level.

  
EAGLE  
HILLS

  
مراسي البحرين  
MARASSI AL BAHRAIN

# MR

مراسي رزیدنسز  
Marassi Residences

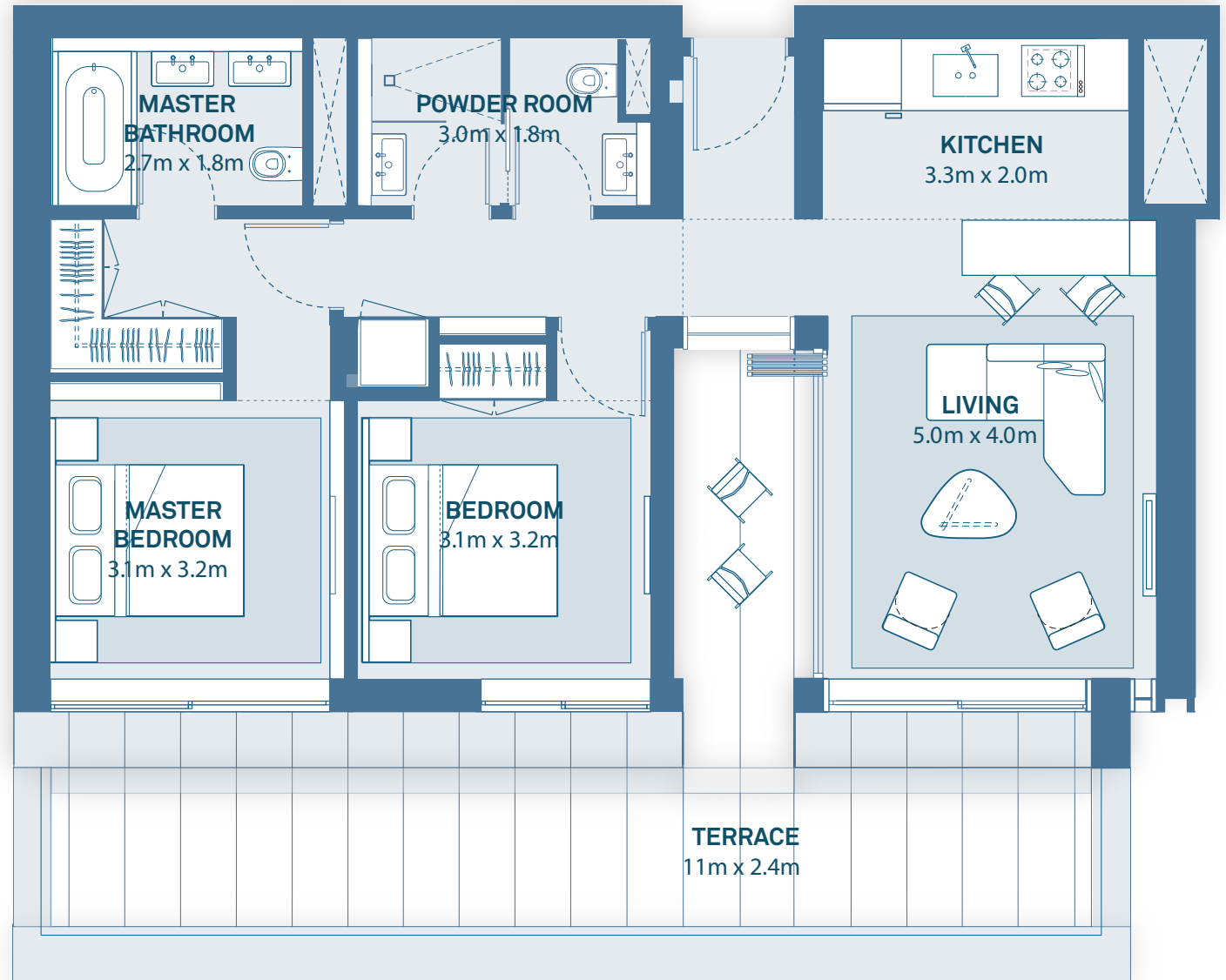
## TYPICAL 2 BEDROOM SOUTHERLY ASPECT

Residential Towers 1, 2 - Terrace  
Level 2

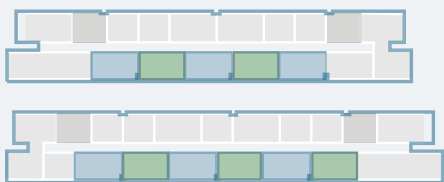
Suite Area 84.5 sq. m

Balcony Area 40 sq. m

Total Area 124.5 sq. m



## KEY PLAN



Blue – Displayed Floor Plan  
Green – Mirrored Floor Plan

Disclaimer: 1. All room dimensions are measured to structural elements and exclude all finishes and construction tolerances. 2. All dimensions have been provided by our consultant architects. 3. All materials, dimensions and drawings are approximate. Information is subject to change without notice. 4. Actual suite area may vary from the stated area. Drawings not to scale. The developer reserves the right to make revisions. 5. Calculation of suite area is measured as the area bounded by the centre line of the demising or partition walls separating one unit from another unit, the exterior face of all exterior walls, and the exterior face of the corridor wall enclosing the adjoining unit. 6. Calculation of balcony area is measured as the area bounded by the centre line of the demising or partition walls separating one unit from another unit, the outmost face of the enclosing guard and the external face of the unit adjoining the balcony. 7. The units are measured at typical floor in the building. Columns may vary in size depending on the floor level.

EAGLE  
HILLS

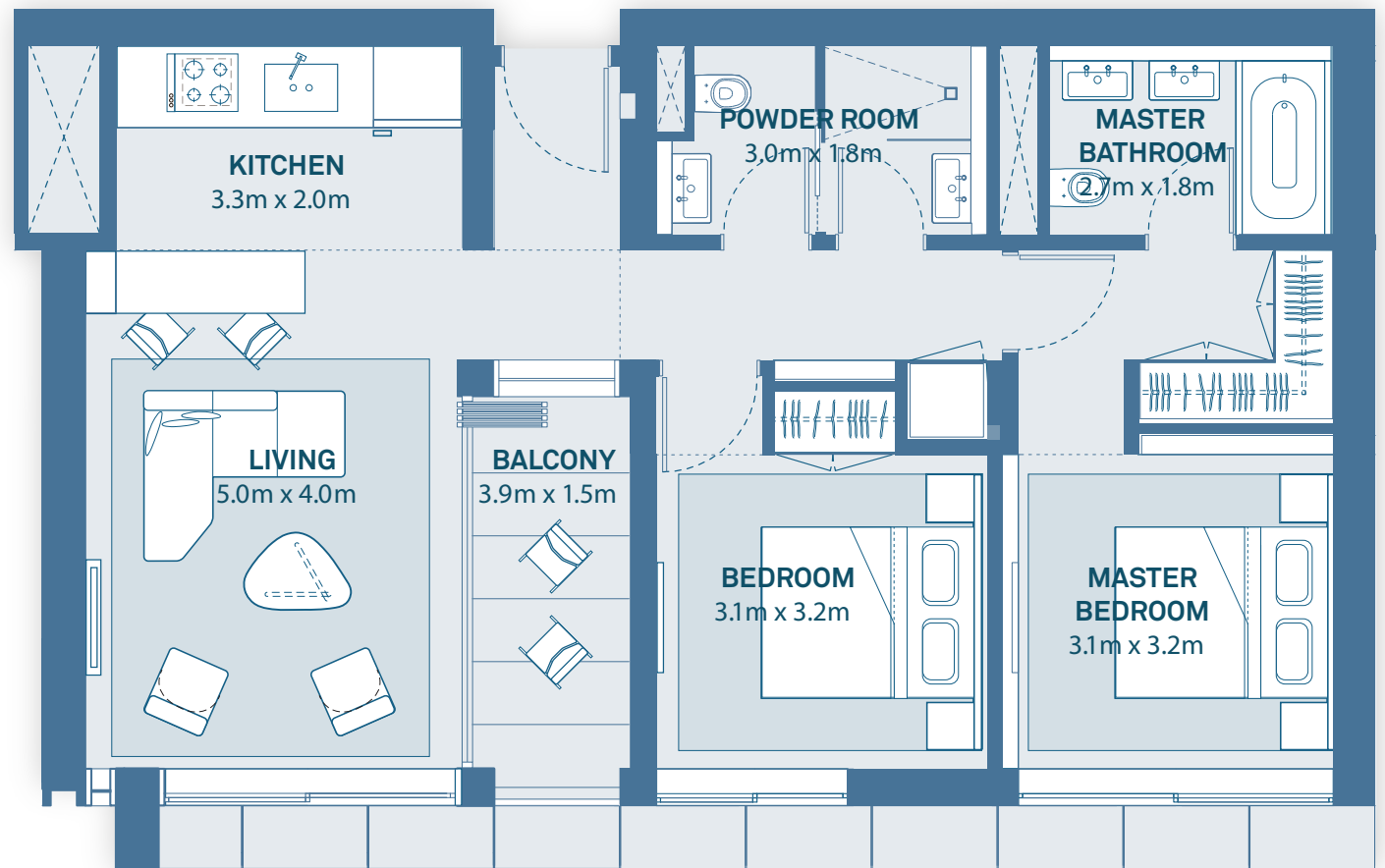
مراسي البحرين  
MARASSI AL BAHRAIN



## TYPICAL 2 BEDROOM SOUTHERLY ASPECT

Residential Tower 1,2  
 Level 3 - Level 9

Suite Area	84.5 sq. m
Balcony Area	6 sq. m
Total Area	90.5 sq. m



### KEY PLAN

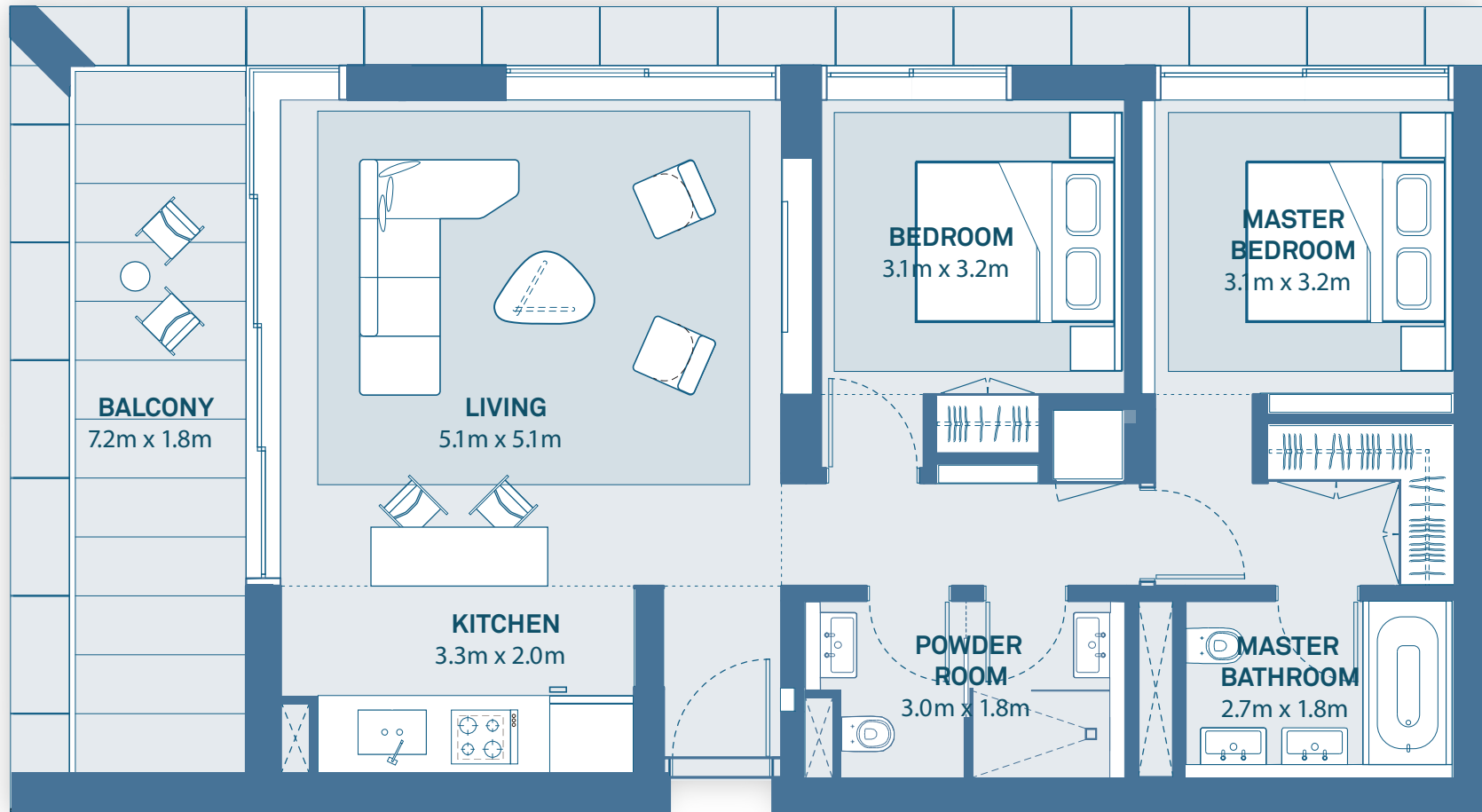


Blue – Displayed Floor Plan  
 Green – Mirrored Floor Plan

Disclaimer: 1. All room dimensions are measured to structural elements and exclude all finishes and construction tolerances. 2. All dimensions have been provided by our consultant architects. 3. All materials, dimensions and drawings are approximate. Information is subject to change without notice. 4. Actual suite area may vary from the stated area. Drawings not to scale. The developer reserves the right to make revisions. 5. Calculation of suite area is measured as the area bounded by the centre line of the demising or partition walls separating one unit from another unit, the exterior face of all exterior walls, and the exterior face of the corridor wall enclosing the adjoining unit. 6. Calculation of balcony area is measured as the area bounded by the centre line of the demising or partition walls separating one unit from another unit, the outmost face of the enclosing guard and the external face of the unit adjoining the balcony. 7. The units are measured at typical floor in the building. Columns may vary in size depending on the floor level.

**TYPICAL 2 BEDROOM  
 NORTHERLY ASPECT**

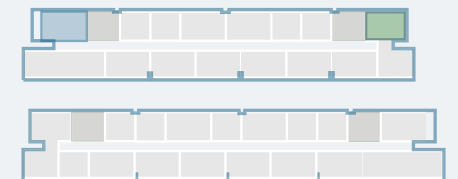
Residential Tower 1,2  
 Tower 1: Level 1 - Level 9  
 Tower 2: Level 2 - Level 9



Suite Area	91 sq. m
Balcony Area	14 sq. m
Total Area	105 sq. m

**KEY PLAN**

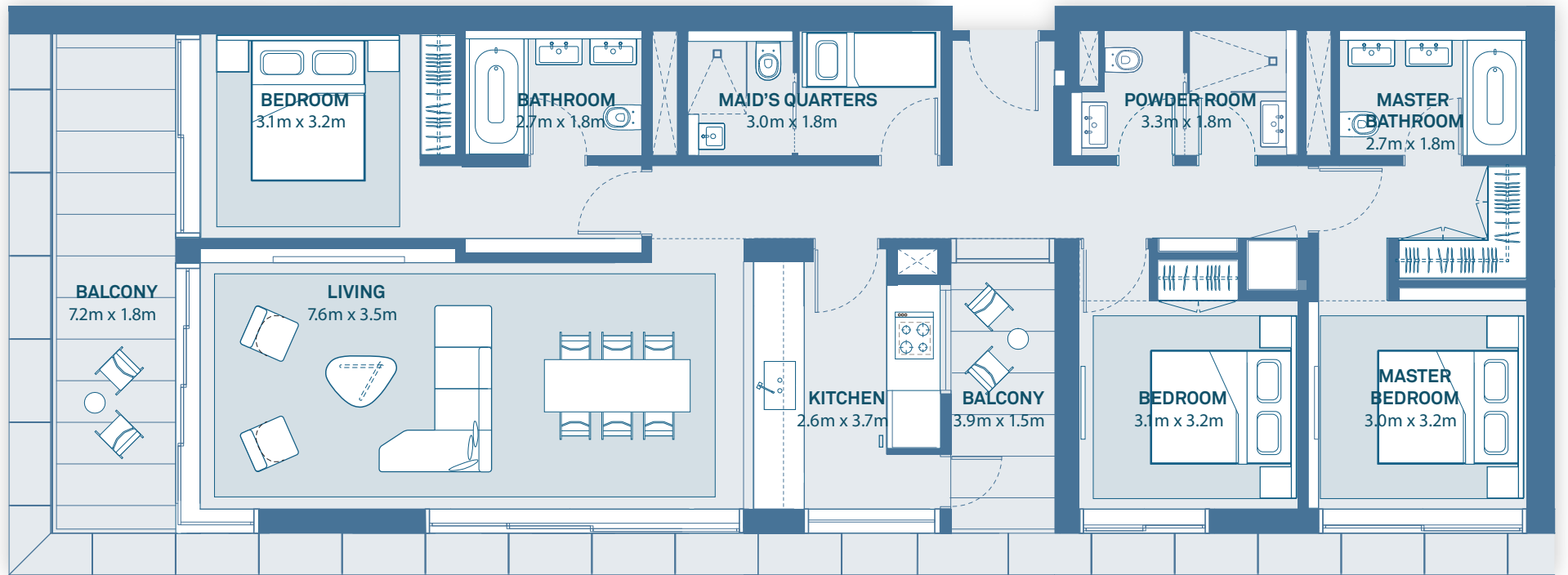
Blue – Displayed Floor Plan  
 Green – Mirrored Floor Plan



Disclaimer: 1. All room dimensions are measured to structural elements and exclude all finishes and construction tolerances. 2. All dimensions have been provided by our consultant architects. 3. All materials, dimensions and drawings are approximate. Information is subject to change without notice. 4. Actual suite area may vary from the stated area. Drawings not to scale. The developer reserves the right to make revisions. 5. Calculation of suite area is measured as the area bounded by the centre line of the demising or partition walls separating one unit from another unit, the exterior face of all exterior walls, and the exterior face of the corridor wall enclosing the adjoining unit. 6. Calculation of balcony area is measured as the area bounded by the centre line of the demising or partition walls separating one unit from another unit, the outmost face of the enclosing guard and the external face of the unit adjoining the balcony. 7. The units are measured at typical floor in the building. Columns may vary in size depending on the floor level.

**TYPICAL 3 BEDROOM  
CORNER ASPECT**

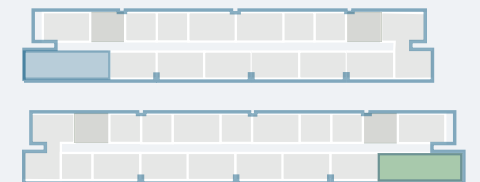
Residential Tower 1,2  
Tower 1: Level 3 - Level 9  
Tower 2: Level 3 - Level 9



Suite Area	139 sq. m
Balcony Area	20 sq. m
Total Area	159 sq. m

**KEY PLAN**

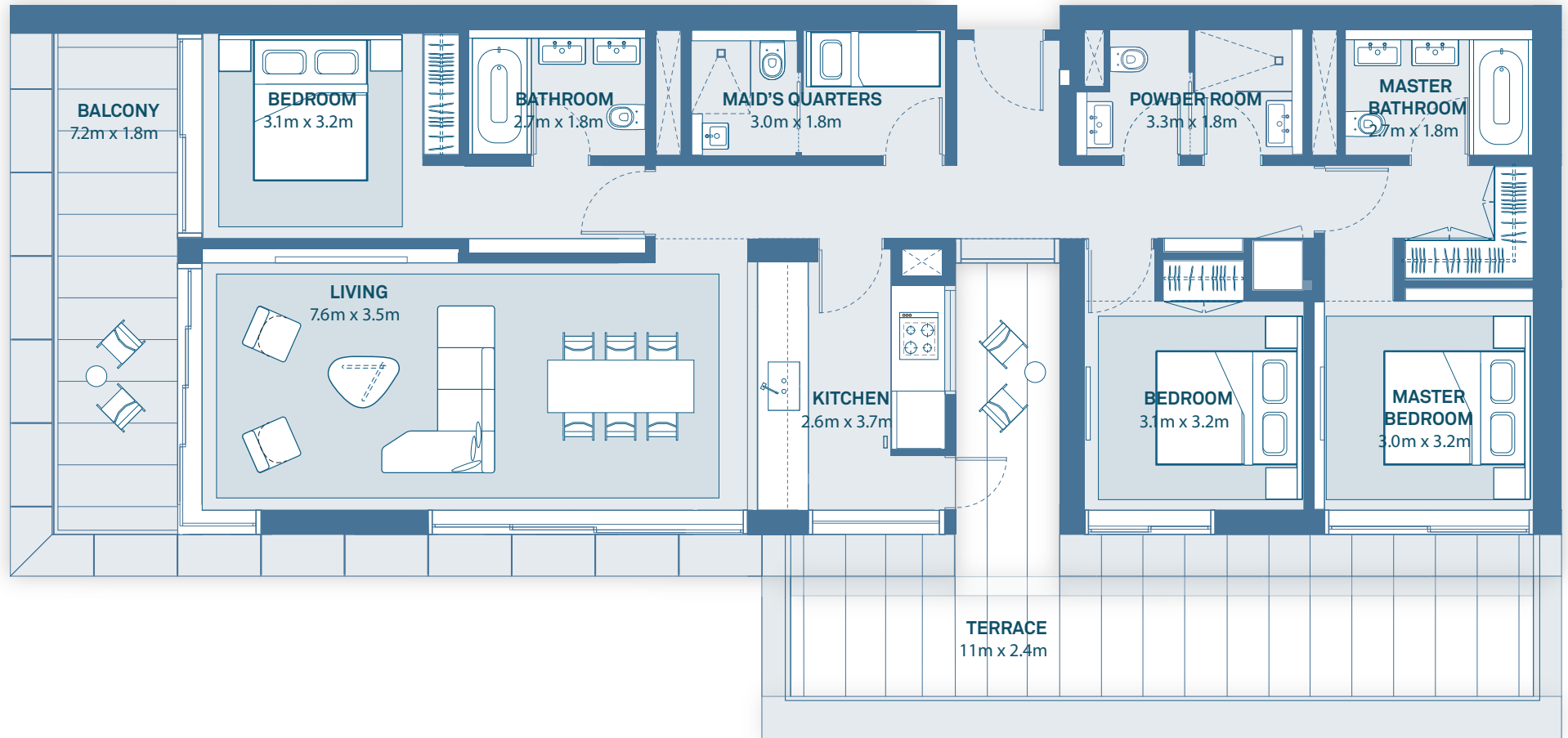
Blue – Displayed Floor Plan  
Green – Mirrored Floor Plan



Disclaimer: 1. All room dimensions are measured to structural elements and exclude all finishes and construction tolerances. 2. All dimensions have been provided by our consultant architects. 3. All materials, dimensions and drawings are approximate. Information is subject to change without notice. 4. Actual suite area may vary from the stated area. Drawings not to scale. The developer reserves the right to make revisions. 5. Calculation of suite area is measured as the area bounded by the centre line of the demising or partition walls separating one unit from another unit, the exterior face of all exterior walls, and the exterior face of the corridor wall enclosing the adjoining unit. 6. Calculation of balcony area is measured as the area bounded by the centre line of the demising or partition walls separating one unit from another unit, the outmost face of the enclosing guard and the external face of the unit adjoining the balcony. 7. The units are measured at typical floor in the building. Columns may vary in size depending on the floor level.

**TYPICAL 3 BEDROOM  
CORNER ASPECT**

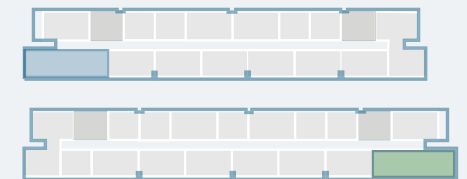
Residential Tower 1,2 - Terrace  
Level 2



Suite Area	139 sq. m
Balcony Area	56 sq. m
Total Area	195 sq. m

**KEY PLAN**

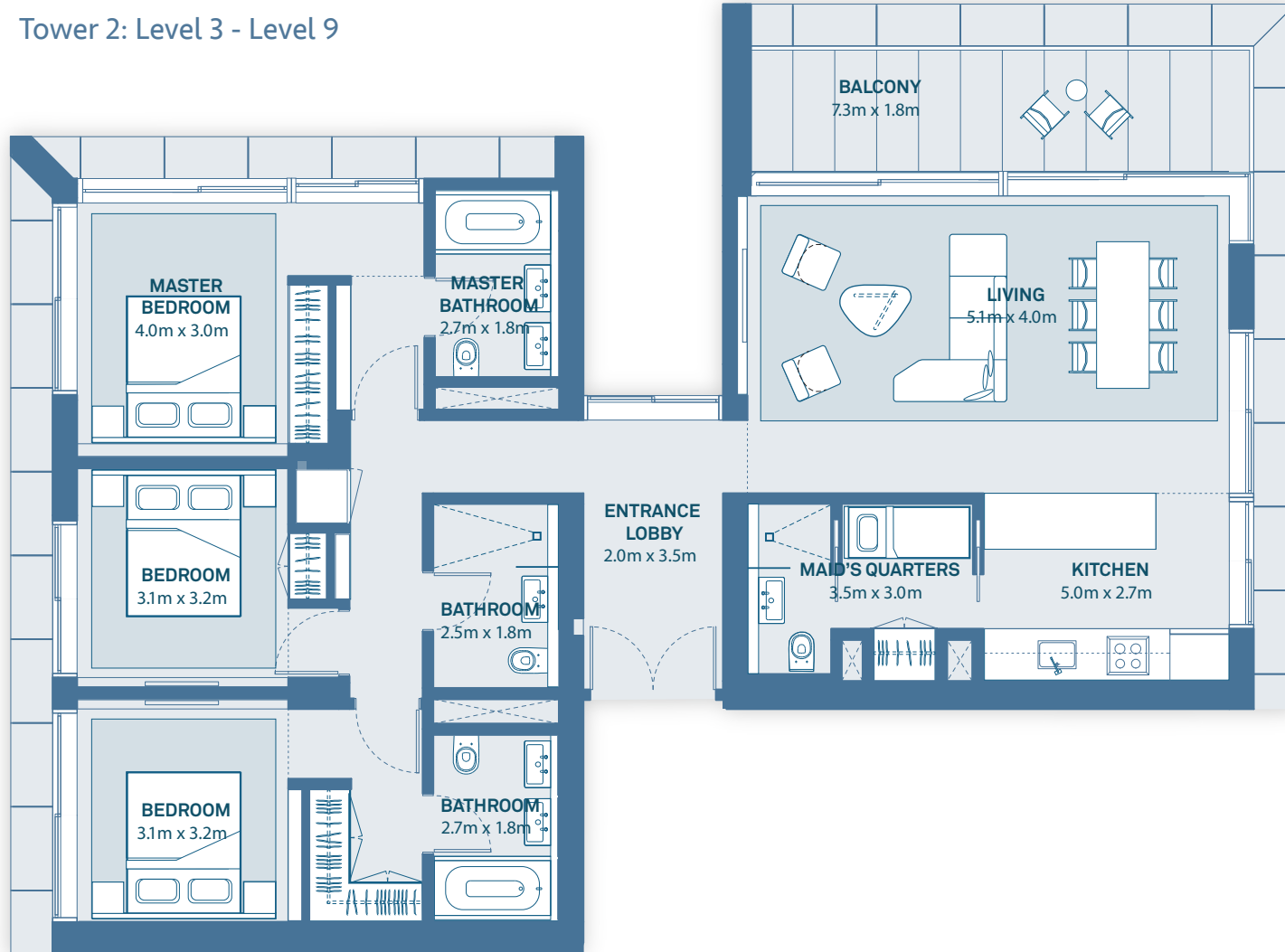
Blue – Displayed Floor Plan  
Green – Mirrored Floor Plan



Disclaimer: 1. All room dimensions are measured to structural elements and exclude all finishes and construction tolerances. 2. All dimensions have been provided by our consultant architects. 3. All materials, dimensions and drawings are approximate. Information is subject to change without notice. 4. Actual suite area may vary from the stated area. Drawings not to scale. The developer reserves the right to make revisions. 5. Calculation of suite area is measured as the area bounded by the centre line of the demising or partition walls separating one unit from another unit, the exterior face of all exterior walls, and the exterior face of the corridor wall enclosing the adjoining unit. 6. Calculation of balcony area is measured as the area bounded by the centre line of the demising or partition walls separating one unit from another unit, the outmost face of the enclosing guard and the external face of the unit adjoining the balcony. 7. The units are measured at typical floor in the building. Columns may vary in size depending on the floor level.

**TYPICAL 3 BEDROOM  
 CORNER ASPECT**

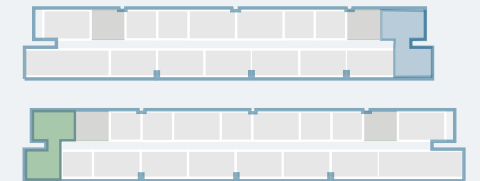
Residential Tower 1,2  
 Tower 1: Level 2 - Level 9  
 Tower 2: Level 3 - Level 9



Suite Area	146 sq. m
Balcony Area	14 sq. m
Total Area	160 sq. m

**KEY PLAN**

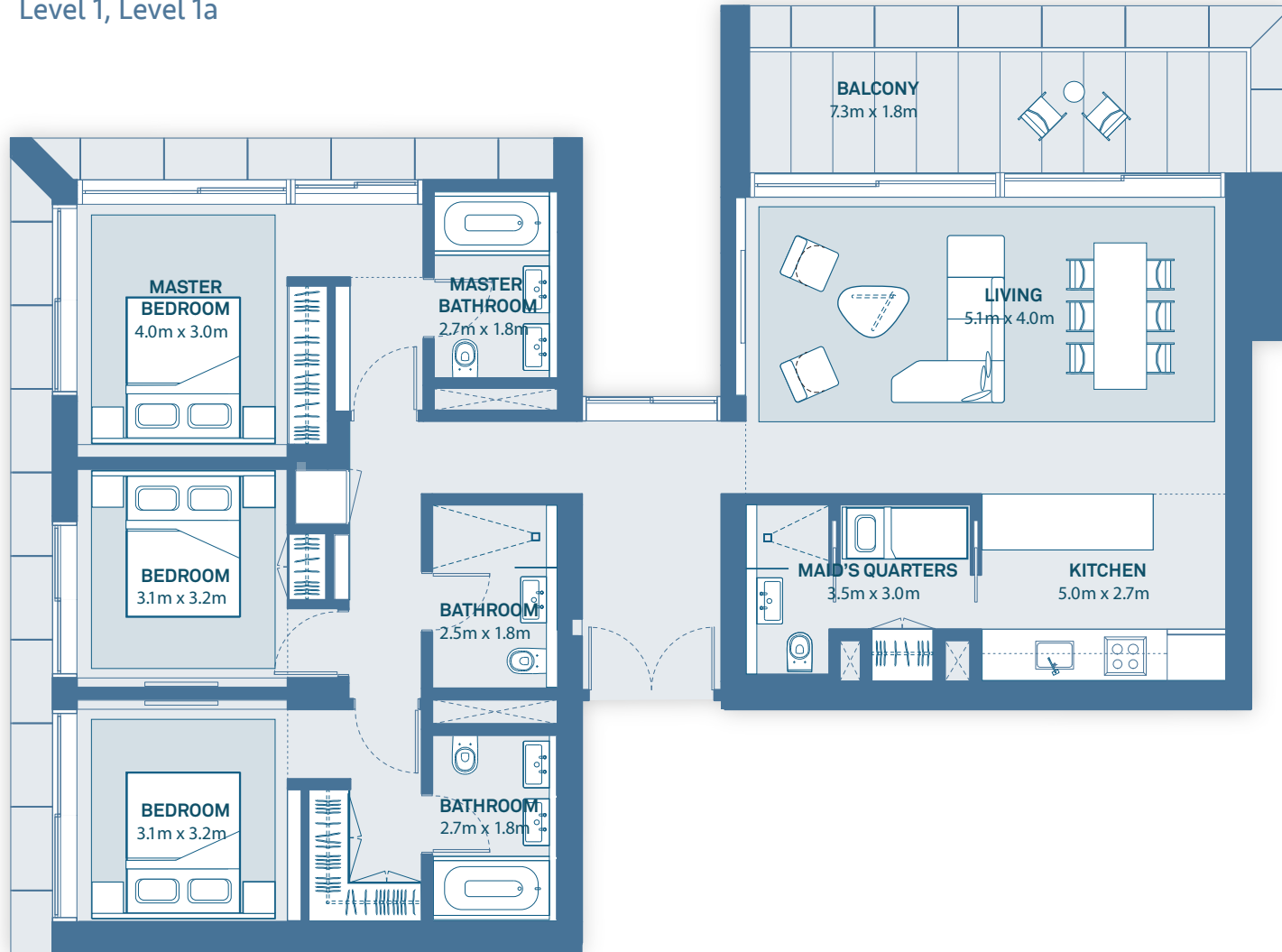
Blue – Displayed Floor Plan  
 Green – Mirrored Floor Plan



Disclaimer: 1. All room dimensions are measured to structural elements and exclude all finishes and construction tolerances. 2. All dimensions have been provided by our consultant architects. 3. All materials, dimensions and drawings are approximate. Information is subject to change without notice. 4. Actual suite area may vary from the stated area. Drawings not to scale. The developer reserves the right to make revisions. 5. Calculation of suite area is measured as the area bounded by the centre line of the demising or partition walls separating one unit from another unit, the exterior face of all exterior walls, and the exterior face of the corridor wall enclosing the adjoining unit. 6. Calculation of balcony area is measured as the area bounded by the centre line of the demising or partition walls separating one unit from another unit, the outmost face of the enclosing guard and the external face of the unit adjoining the balcony. 7. The units are measured at typical floor in the building. Columns may vary in size depending on the floor level.

**TYPICAL 3 BEDROOM  
 CORNER ASPECT**

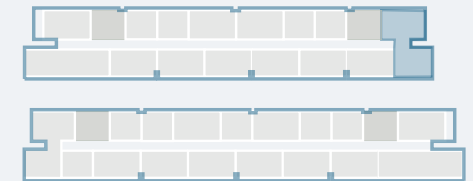
Residential Tower 1  
 Level 1, Level 1a



Suite Area	146 sq. m
Balcony Area	14 sq. m
Total Area	160 sq. m

**KEY PLAN**

Blue – Displayed Floor Plan  
 Green – Mirrored Floor Plan



Disclaimer: 1. All room dimensions are measured to structural elements and exclude all finishes and construction tolerances. 2. All dimensions have been provided by our consultant architects. 3. All materials, dimensions and drawings are approximate. Information is subject to change without notice. 4. Actual suite area may vary from the stated area. Drawings not to scale. The developer reserves the right to make revisions. 5. Calculation of suite area is measured as the area bounded by the centre line of the demising or partition walls separating one unit from another unit, the exterior face of all exterior walls, and the exterior face of the corridor wall enclosing the adjoining unit. 6. Calculation of balcony area is measured as the area bounded by the centre line of the demising or partition walls separating one unit from another unit, the outmost face of the enclosing guard and the external face of the unit adjoining the balcony. 7. The units are measured at typical floor in the building. Columns may vary in size depending on the floor level.