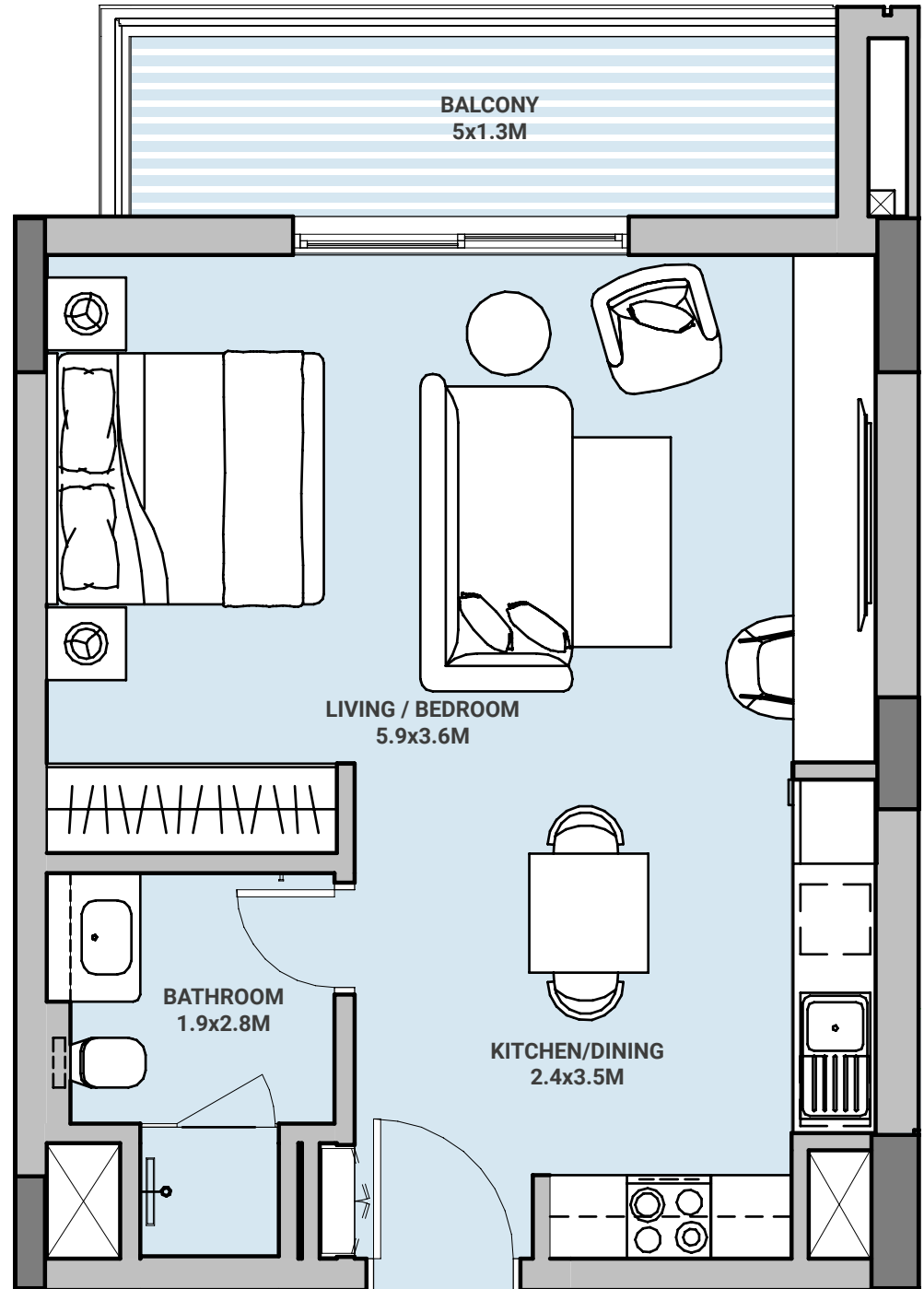
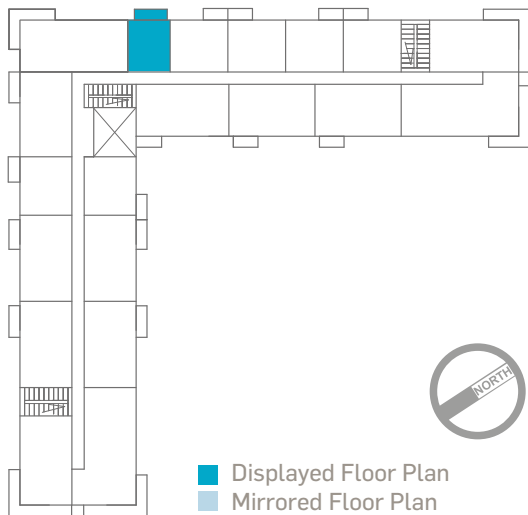


# MB

مراسي بي  
Marassi Bay

## STUDIO TYPE A

LEVEL	2-10
UNIT No	07
SUITE AREA	43.80 sqm
BALCONY AREA	7.24 sqm
<b>TOTAL AREA</b>	<b>51.04 sqm</b>



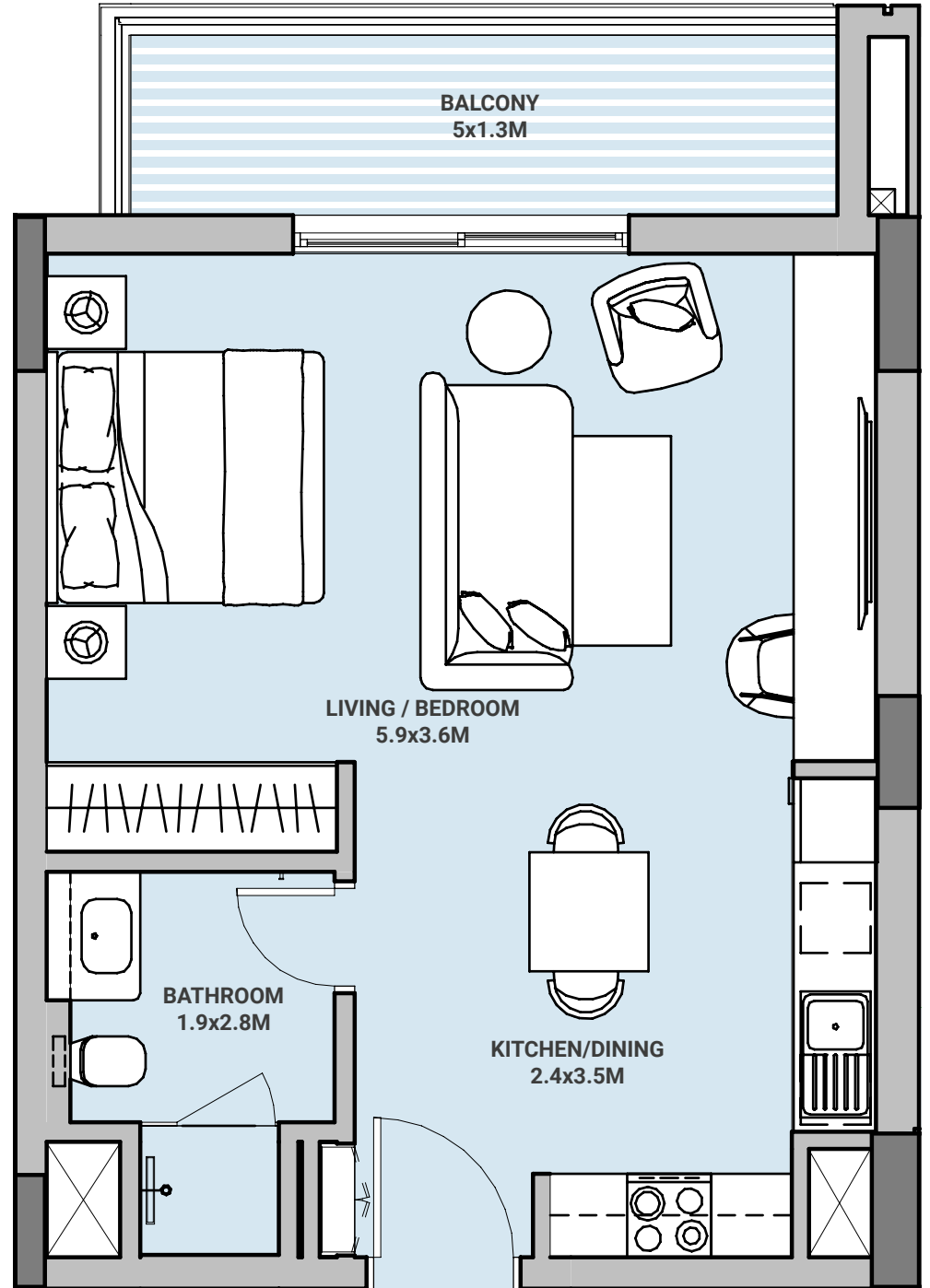
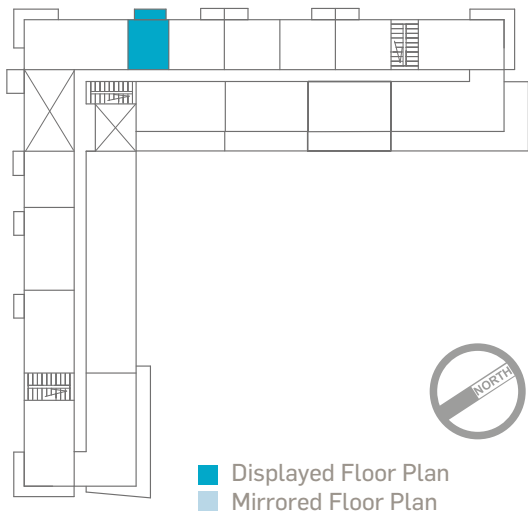
Disclaimer: 1. All room dimensions are measured to structural elements and exclude all finishes and construction tolerances. 2. All materials, dimensions, symbols, and characters indicated on the plans are indicative. 3. The attached plans are for marketing purposes only. Actual suite area may vary from the stated area. Drawings not to scale. The developer reserves the right to make revisions. 4. The areas specified in this unit plan have been calculated based on Bahrain Property Measurement system (BPMS), in general as per the following standards: Inside face of all bounding walls, all centerline of any party walls to adjoining units, excluding the ducts and shafts containing shared building services (refers to Sales and Purchase Agreement). 5. The Unit Site Plan has been prepared for the purpose of identifying the areas of the Unit calculated in accordance with the methodology in note (5). These areas may or may not correspond with any methodologies adopted by the relevant authorities. 6. The units are measured at typical floor in the building. Columns may vary in size depending on the floor level.

# MB

مراسي بي  
Marassi Bay

## STUDIO TYPE A

LEVEL	1
UNIT No	06
SUITE AREA	43.97 sqm
BALCONY AREA	7.01 sqm
<b>TOTAL AREA</b>	<b>50.98 sqm</b>



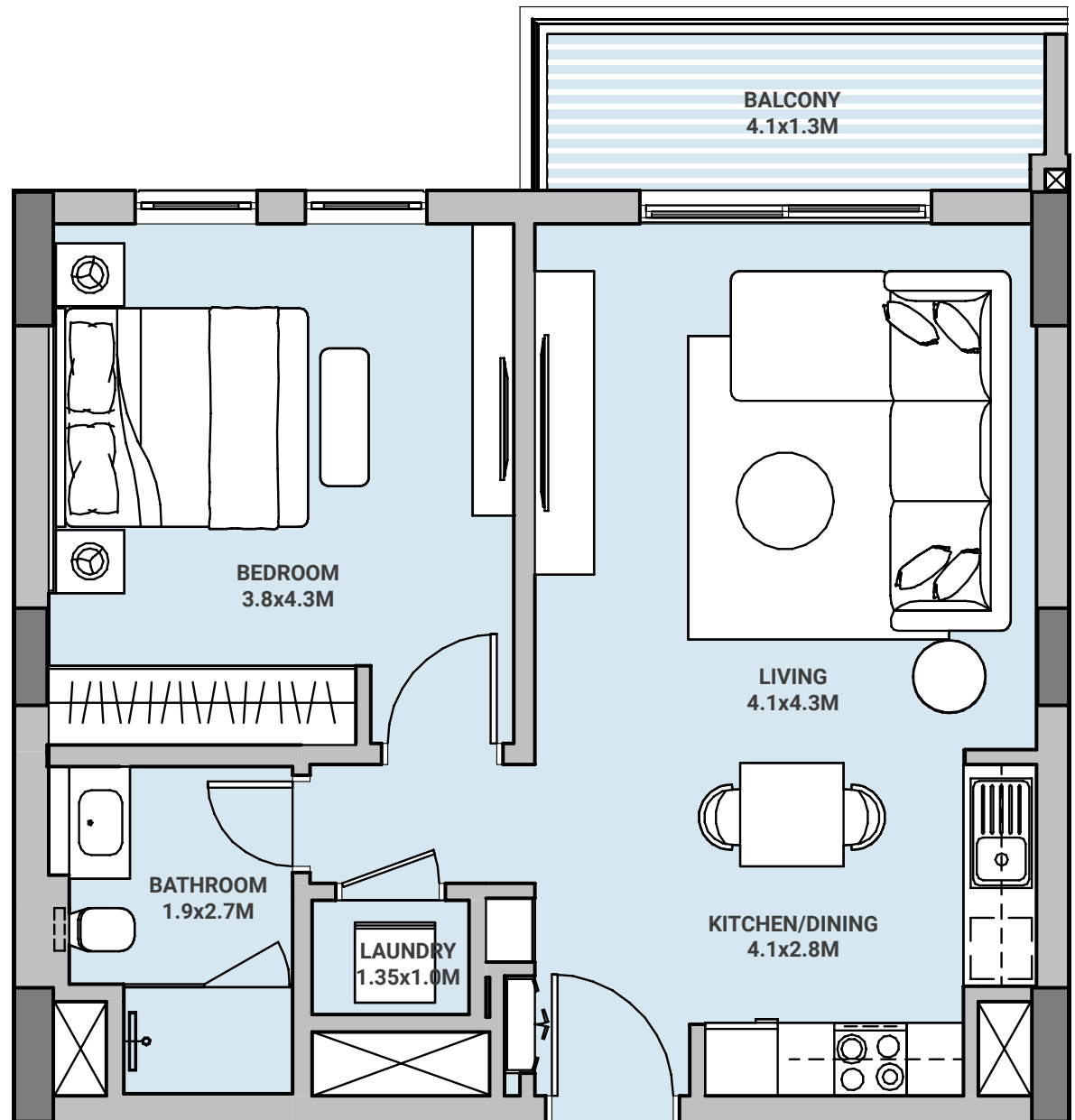
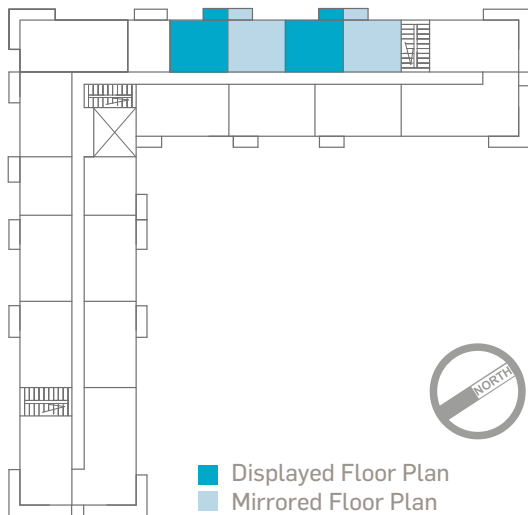
Disclaimer: 1. All room dimensions are measured to structural elements and exclude all finishes and construction tolerances. 2. All materials, dimensions, symbols, and characters indicated on the plans are indicative. 3. The attached plans are for marketing purposes only. Actual suite area may vary from the stated area. Drawings not to scale. The developer reserves the right to make revisions. 4. The areas specified in this unit plan have been calculated based on Bahrain Property Measurement system (BPMS), in general as per the following standards: Inside face of all bounding walls, all centerline of any party walls to adjoining units, excluding the ducts and shafts containing shared building services (refers to Sales and Purchase Agreement). 5. The Unit Site Plan has been prepared for the purpose of identifying the areas of the Unit calculated in accordance with the methodology in note (5). These areas may or may not correspond with any methodologies adopted by the relevant authorities. 6. The units are measured at typical floor in the building. Columns may vary in size depending on the floor level.

# MB

مراسي بي  
Marassi Bay

## ONE BEDROOM TYPE 1

LEVEL	2-10
UNIT No	8,9,10&11
SUITE AREA	58.82 sqm
BALCONY AREA	5.97 sqm
<b>TOTAL AREA</b>	<b>64.79 sqm</b>



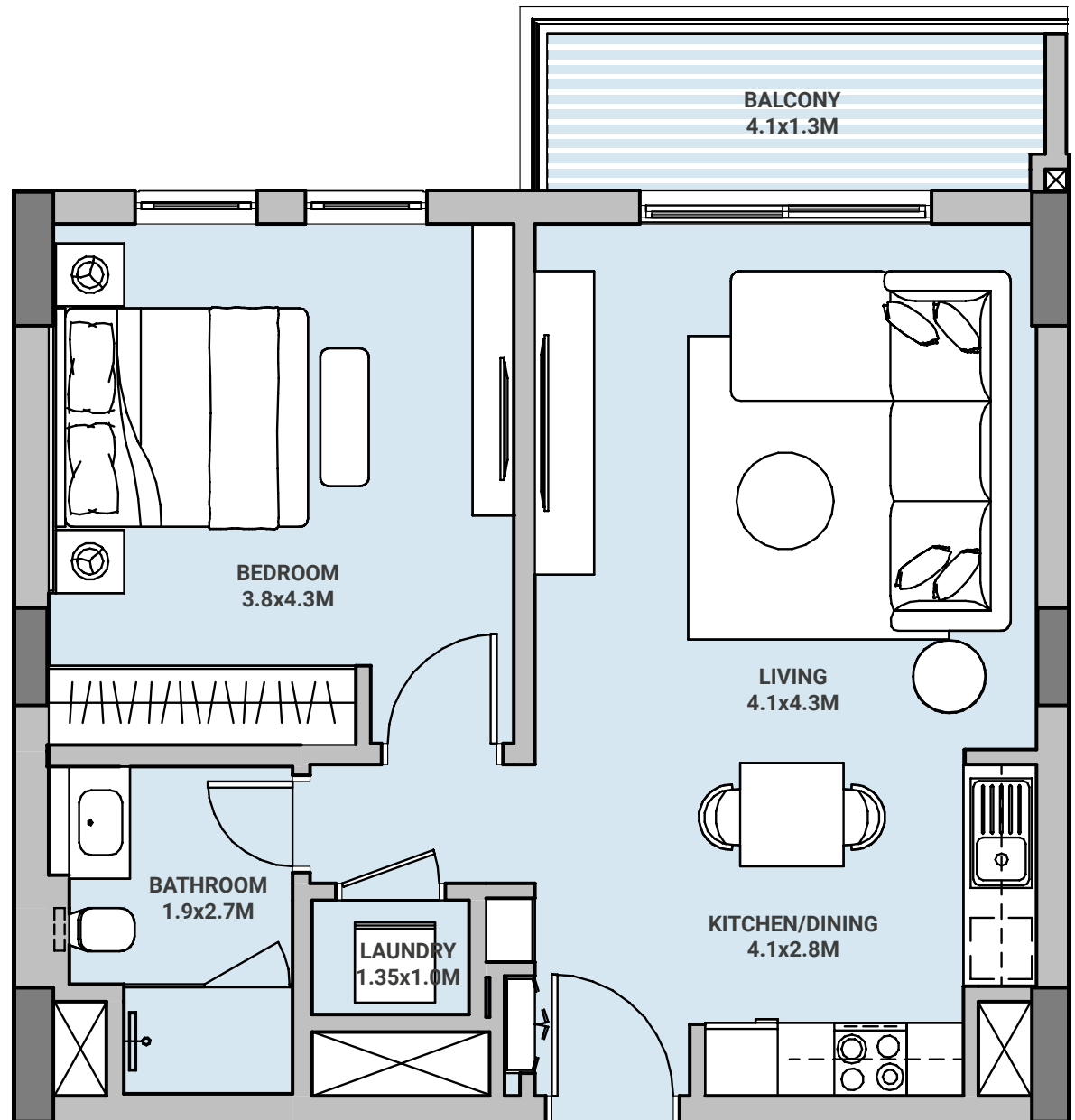
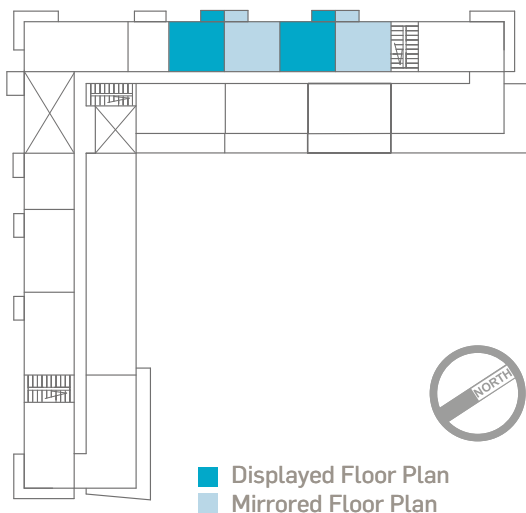
Disclaimer: 1. All room dimensions are measured to structural elements and exclude all finishes and construction tolerances. 2. All materials, dimensions, symbols, and characters indicated on the plans are indicative. 3. The attached plans are for marketing purposes only. Actual suite area may vary from the stated area. Drawings not to scale. The developer reserves the right to make revisions. 4. The areas specified in this unit plan have been calculated based on Bahrain Property Measurement system (BPMS), in general as per the following standards: Inside face of all bounding walls, all centerline of any party walls to adjoining units, excluding the ducts and shafts containing shared building services (refers to Sales and Purchase Agreement). 5. The Unit Site Plan has been prepared for the purpose of identifying the areas of the Unit calculated in accordance with the methodology in note (5). These areas may or may not correspond with any methodologies adopted by the relevant authorities. 6. The units are measured at typical floor in the building. Columns may vary in size depending on the floor level.

# MB

مراسي بي  
Marassi Bay

## ONE BEDROOM TYPE 1

LEVEL	1
UNIT No	7,8,9,10
SUITE AREA	58.96 sqm
BALCONY AREA	5.28 sqm
<b>TOTAL AREA</b>	<b>64.24 sqm</b>



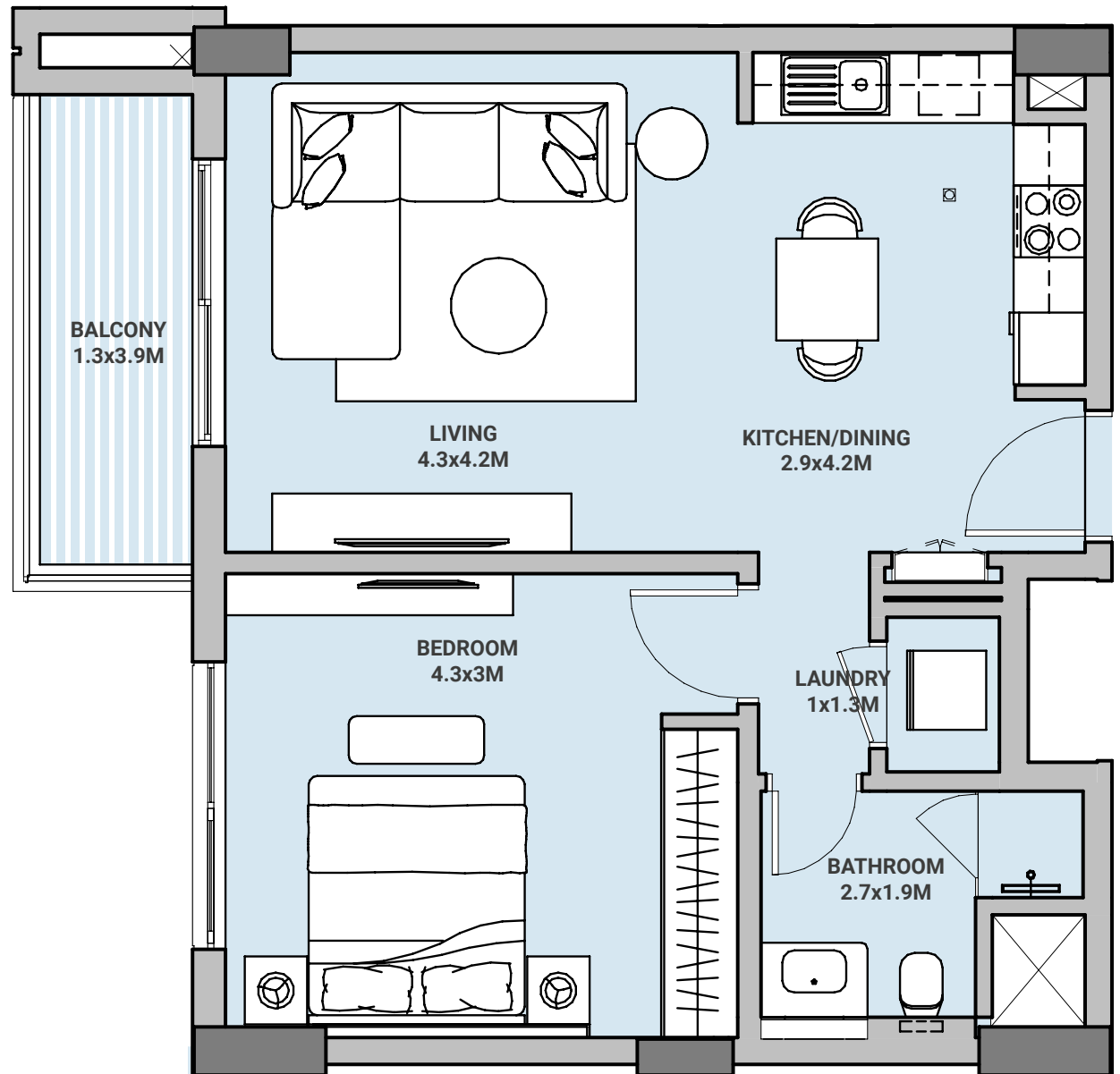
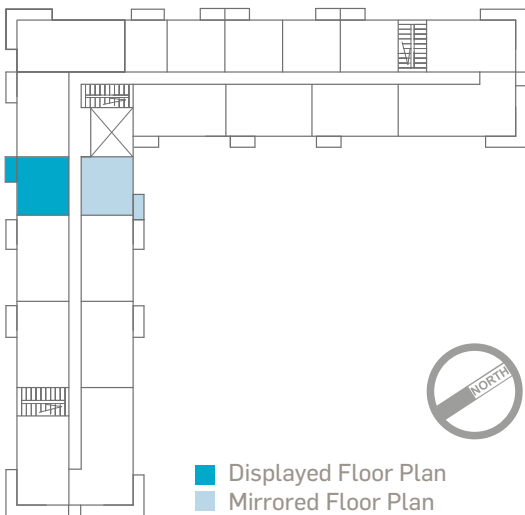
Disclaimer: 1. All room dimensions are measured to structural elements and exclude all finishes and construction tolerances. 2. All materials, dimensions, symbols, and characters indicated on the plans are indicative. 3. The attached plans are for marketing purposes only. Actual suite area may vary from the stated area. Drawings not to scale. The developer reserves the right to make revisions. 4. The areas specified in this unit plan have been calculated based on Bahrain Property Measurement system (BPMS), in general as per the following standards: Inside face of all bounding walls, all centerline of any party walls to adjoining units, excluding the ducts and shafts containing shared building services (refers to Sales and Purchase Agreement). 5. The Unit Site Plan has been prepared for the purpose of identifying the areas of the Unit calculated in accordance with the methodology in note (5). These areas may or may not correspond with any methodologies adopted by the relevant authorities. 6. The units are measured at typical floor in the building. Columns may vary in size depending on the floor level.

# MB

مراسي بي  
Marassi Bay

## ONE BEDROOM TYPE 2

LEVEL	2-10
UNIT No	04 & 17
SUITE AREA	58.51 sqm
BALCONY AREA	5.48 sqm
TOTAL AREA	63.99 sqm



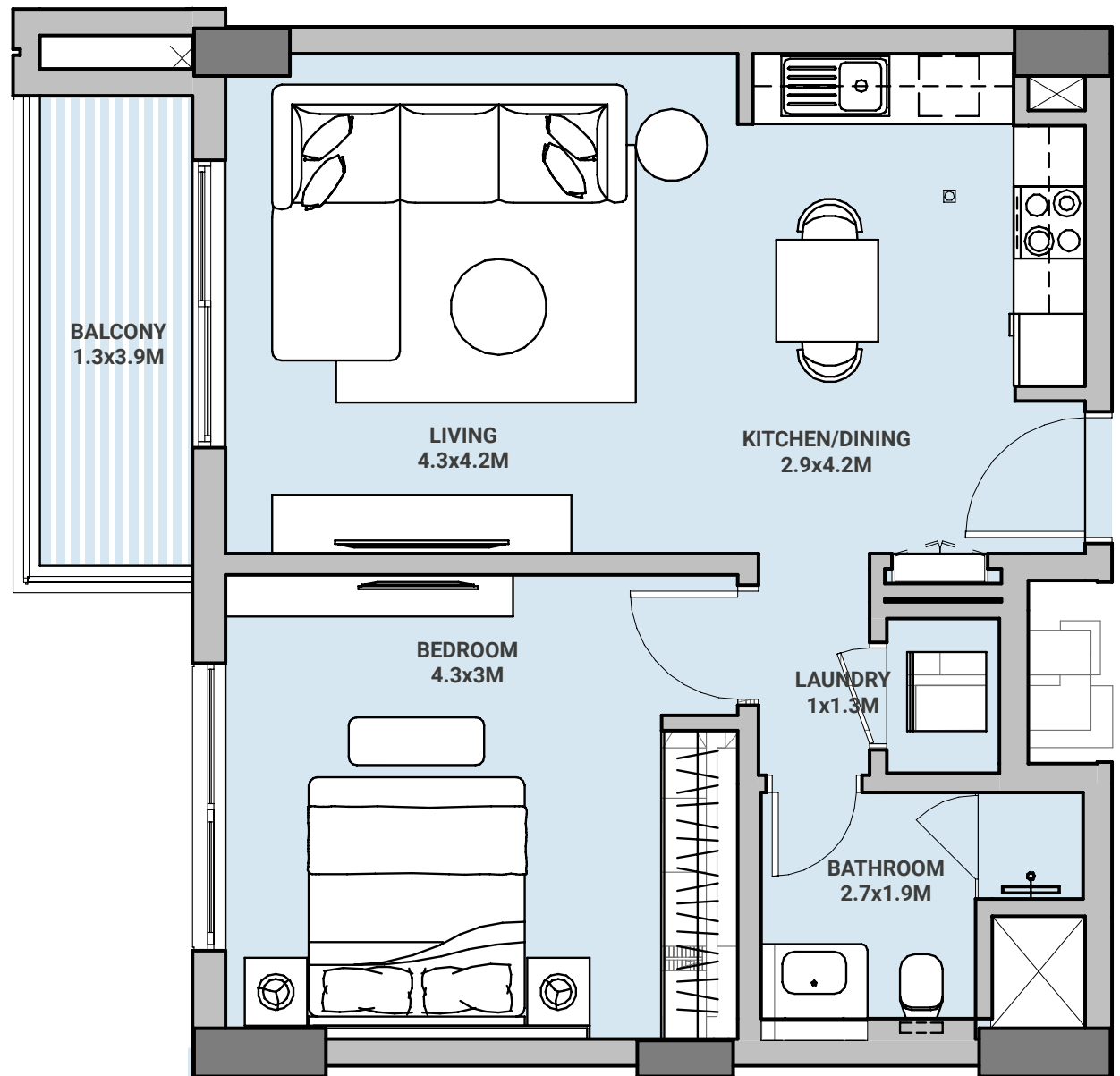
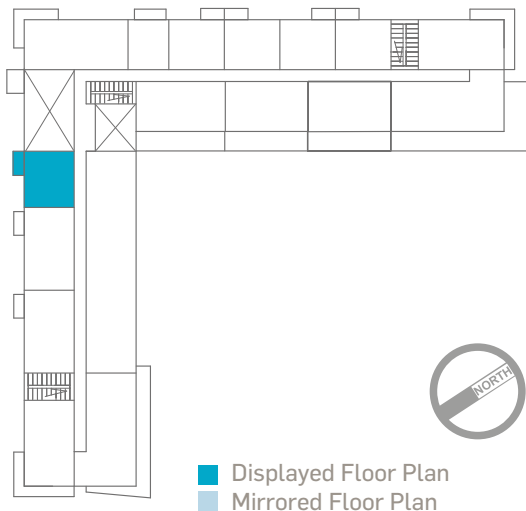
Disclaimer: 1. All room dimensions are measured to structural elements and exclude all finishes and construction tolerances. 2. All materials, dimensions, symbols, and characters indicated on the plans are indicative. 3. The attached plans are for marketing purposes only. Actual suite area may vary from the stated area. Drawings not to scale. The developer reserves the right to make revisions. 4. The areas specified in this unit plan have been calculated based on Bahrain Property Measurement system (BPMS), in general as per the following standards: Inside face of all bounding walls, all centerline of any party walls to adjoining units, excluding the ducts and shafts containing shared building services (refers to Sales and Purchase Agreement). 5. The Unit Site Plan has been prepared for the purpose of identifying the areas of the Unit calculated in accordance with the methodology in note (5). These areas may or may not correspond with any methodologies adopted by the relevant authorities. 6. The units are measured at typical floor in the building. Columns may vary in size depending on the floor level.

# MB

مراسي بي  
Marassi Bay

## ONE BEDROOM TYPE 2

LEVEL	1
UNIT No	04
SUITE AREA	58.51 sqm
BALCONY AREA	5.48 sqm
TOTAL AREA	63.99 sqm



Disclaimer: 1. All room dimensions are measured to structural elements and exclude all finishes and construction tolerances. 2. All materials, dimensions, symbols, and characters indicated on the plans are indicative. 3. The attached plans are for marketing purposes only. Actual suite area may vary from the stated area. Drawings not to scale. The developer reserves the right to make revisions. 4. The areas specified in this unit plan have been calculated based on Bahrain Property Measurement system (BPMS), in general as per the following standards: Inside face of all bounding walls, all centerline of any party walls to adjoining units, excluding the ducts and shafts containing shared building services (refers to Sales and Purchase Agreement). 5. The Unit Site Plan has been prepared for the purpose of identifying the areas of the Unit calculated in accordance with the methodology in note (5). These areas may or may not correspond with any methodologies adopted by the relevant authorities. 6. The units are measured at typical floor in the building. Columns may vary in size depending on the floor level.

مراسي البحرين  
MARASSI AL BAHRAIN

EAGLE  
HILLS

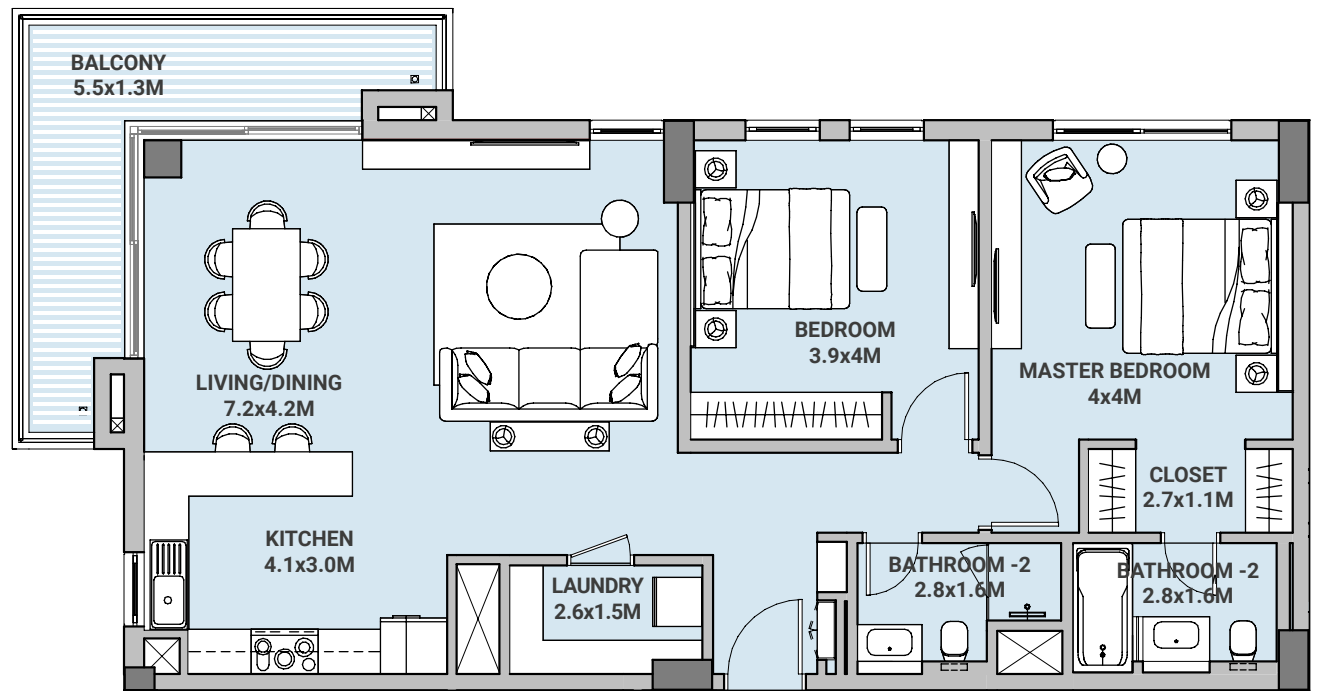
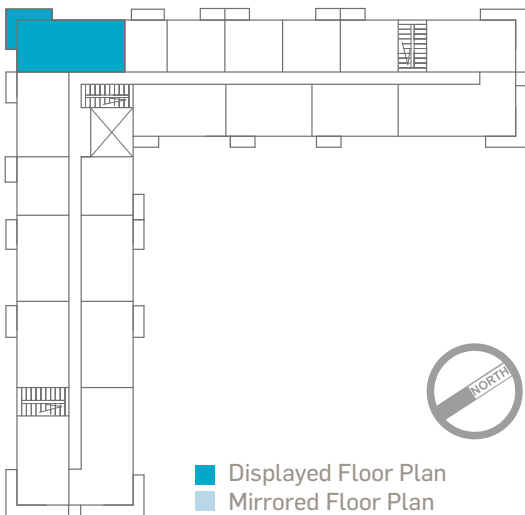
DIYAR

# MB

مراسي بي  
Marassi Bay

## TWO BEDROOM TYPE 1

LEVEL	2-10
UNIT No	06
SUITE AREA	110.87 sqm
BALCONY AREA	12.44 sqm
<b>TOTAL AREA</b>	<b>123.31 sqm</b>



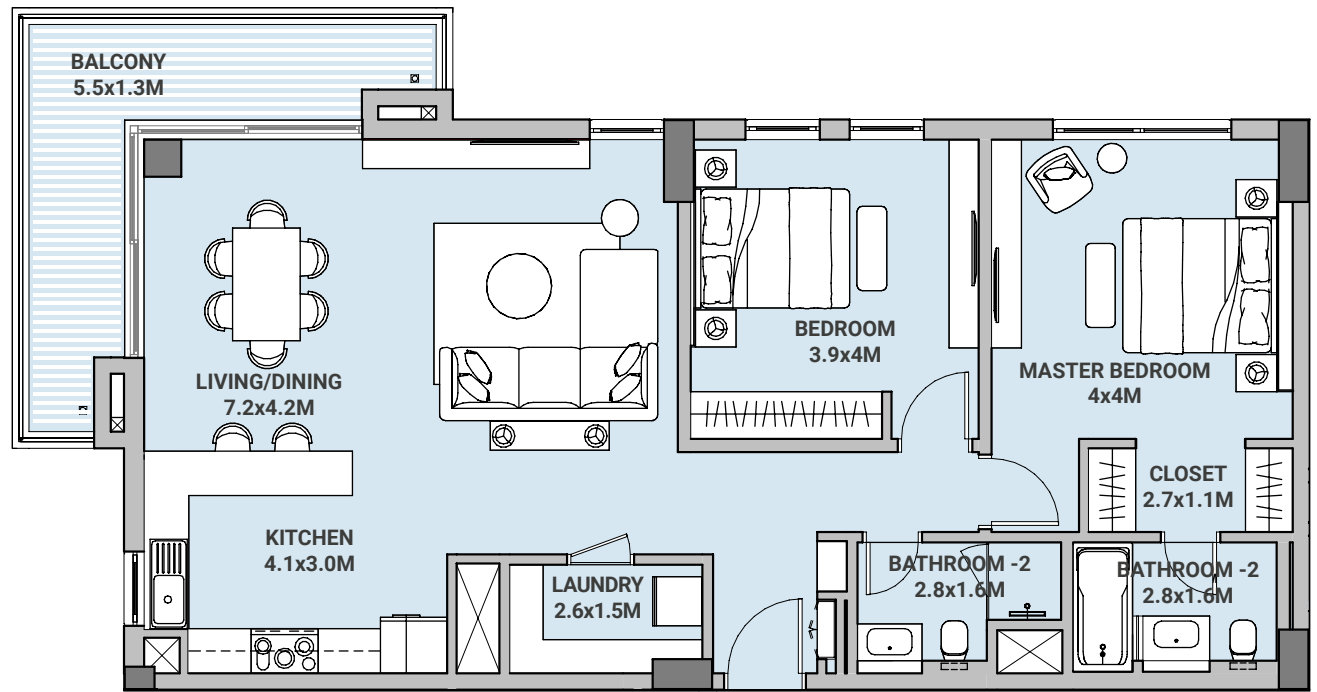
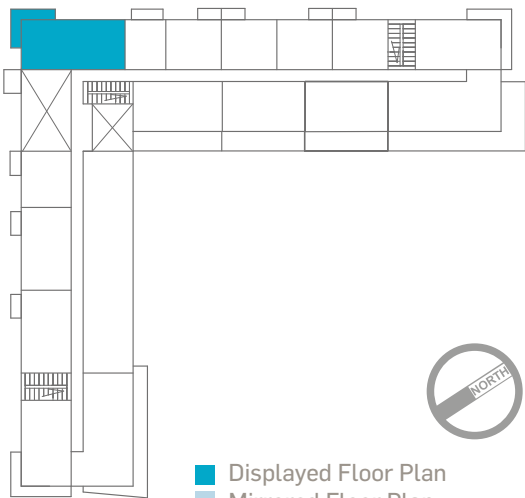
Disclaimer: 1. All room dimensions are measured to structural elements and exclude all finishes and construction tolerances. 2. All materials, dimensions, symbols, and characters indicated on the plans are indicative. 3. The attached plans are for marketing purposes only. Actual suite area may vary from the stated area. Drawings not to scale. The developer reserves the right to make revisions. 4. The areas specified in this unit plan have been calculated based on Bahrain Property Measurement system (BPMS), in general as per the following standards: Inside face of all bounding walls, all centerline of any party walls to adjoining units, excluding the ducts and shafts containing shared building services (refers to Sales and Purchase Agreement). 5. The Unit Site Plan has been prepared for the purpose of identifying the areas of the Unit calculated in accordance with the methodology in note (5). These areas may or may not correspond with any methodologies adopted by the relevant authorities. 6. The units are measured at typical floor in the building. Columns may vary in size depending on the floor level.

# MB

مراسي بي  
Marassi Bay

## TWO BEDROOM TYPE 1

LEVEL	1
UNIT No	05
SUITE AREA	109.65 sqm
BALCONY AREA	12.47 sqm
<b>TOTAL AREA</b>	<b>122.12 sqm</b>



Disclaimer: 1. All room dimensions are measured to structural elements and exclude all finishes and construction tolerances. 2. All materials, dimensions, symbols, and characters indicated on the plans are indicative. 3. The attached plans are for marketing purposes only. Actual suite area may vary from the stated area. Drawings not to scale. The developer reserves the right to make revisions. 4. The areas specified in this unit plan have been calculated based on Bahrain Property Measurement system (BPMS), in general as per the following standards: Inside face of all bounding walls, all centerline of any party walls to adjoining units, excluding the ducts and shafts containing shared building services (refers to Sales and Purchase Agreement). 5. The Unit Site Plan has been prepared for the purpose of identifying the areas of the Unit calculated in accordance with the methodology in note (5). These areas may or may not correspond with any methodologies adopted by the relevant authorities. 6. The units are measured at typical floor in the building. Columns may vary in size depending on the floor level.

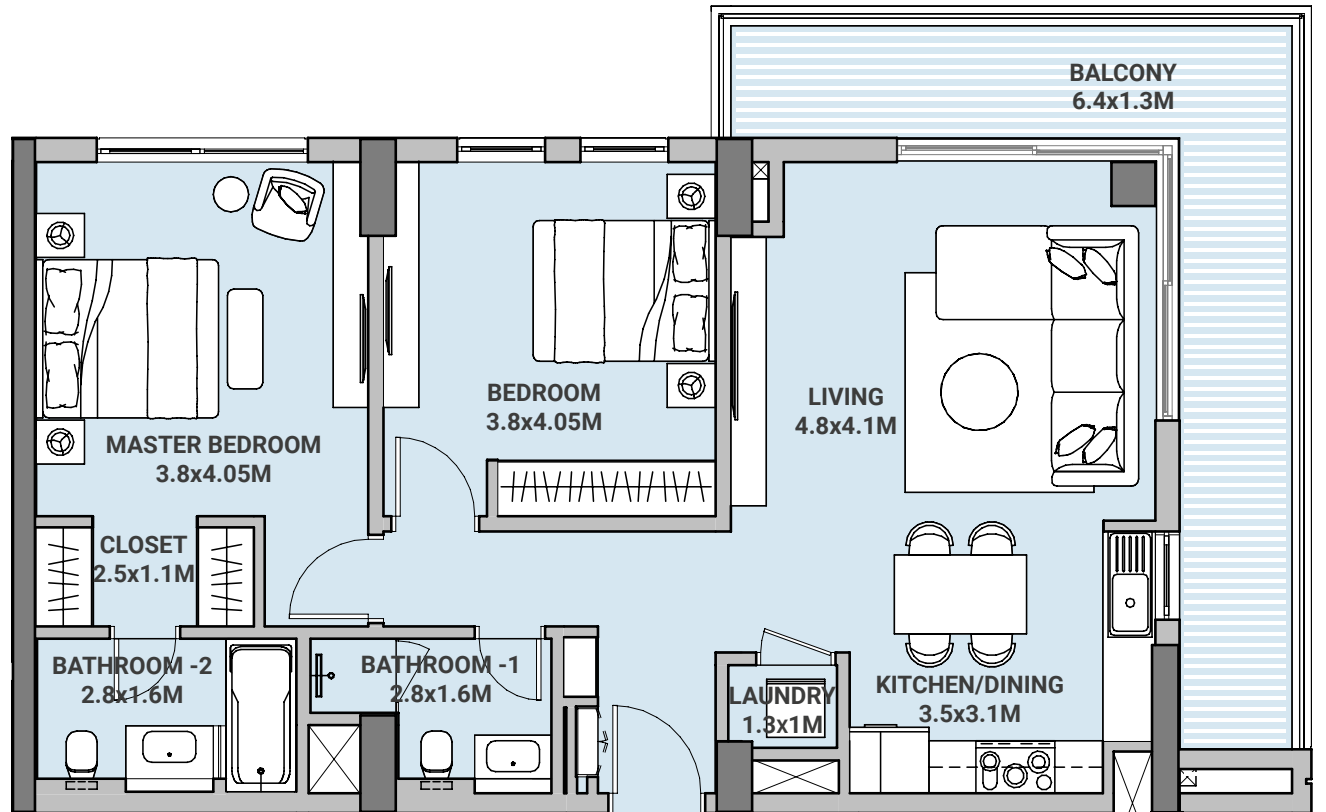
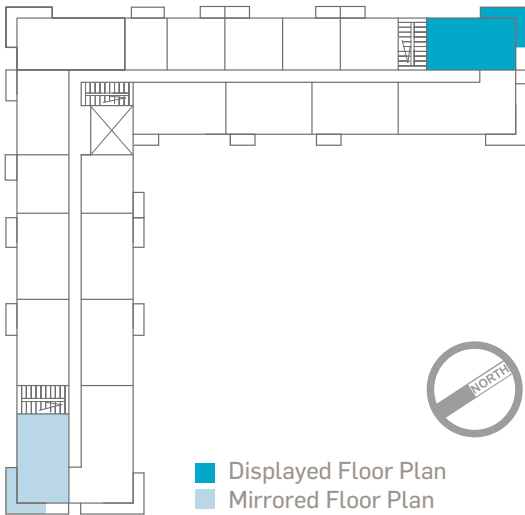


# MB

مراسي بي  
Marassi Bay

## TWO BEDROOM TYPE 2

LEVEL	2-10
UNIT No	01 & 12
SUITE AREA	90.65 sqm
BALCONY AREA	18.59 sqm
<b>TOTAL AREA</b>	<b>109.24 sqm</b>



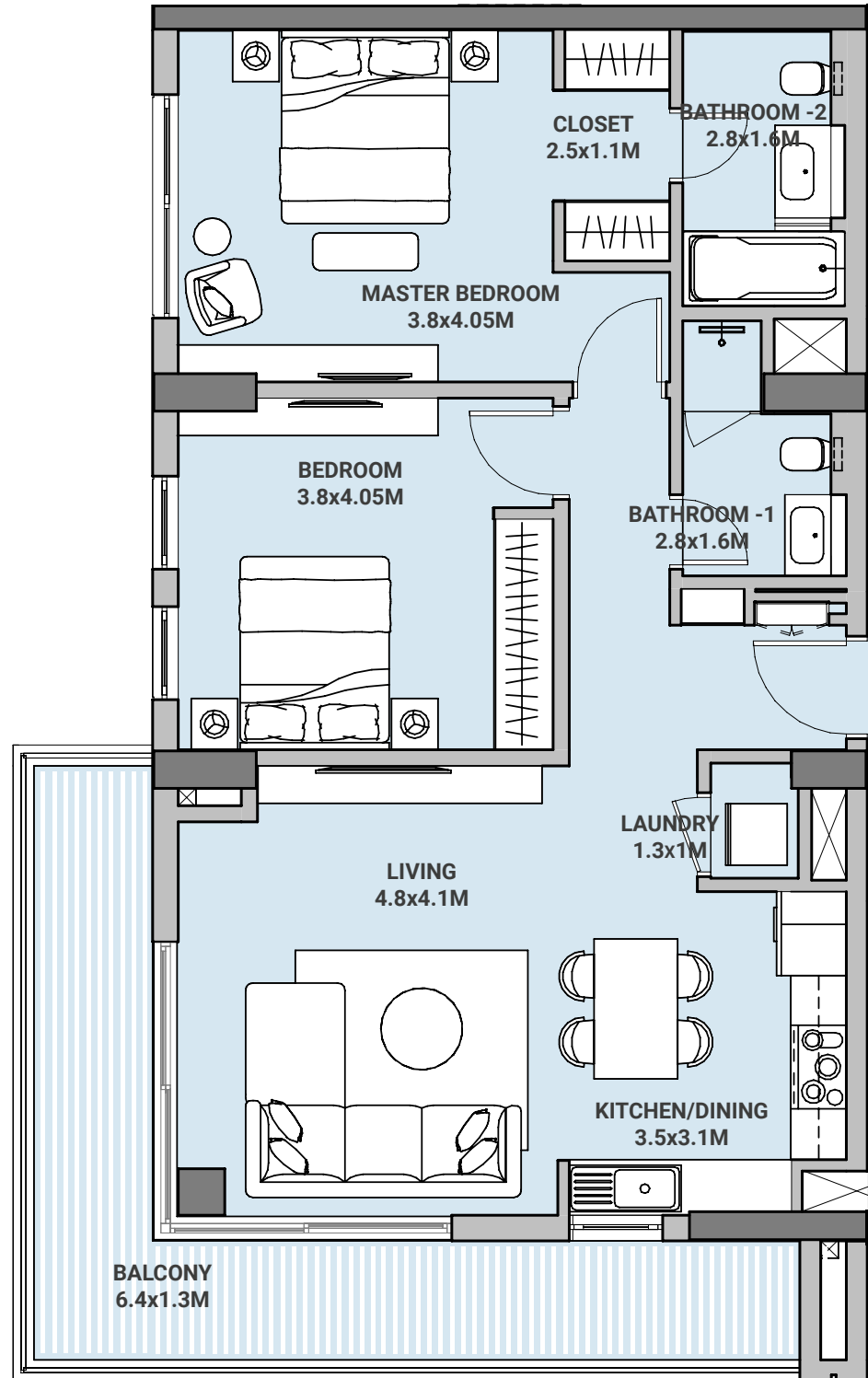
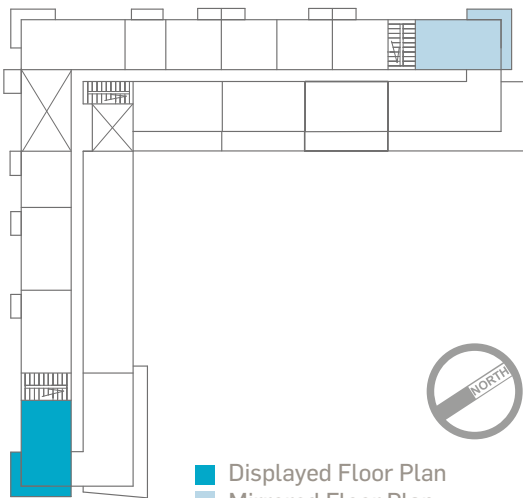
Disclaimer: 1. All room dimensions are measured to structural elements and exclude all finishes and construction tolerances. 2. All materials, dimensions, symbols, and characters indicated on the plans are indicative. 3. The attached plans are for marketing purposes only. Actual suite area may vary from the stated area. Drawings not to scale. The developer reserves the right to make revisions. 4. The areas specified in this unit plan have been calculated based on Bahrain Property Measurement system (BPMS), in general as per the following standards: Inside face of all bounding walls, all centerline of any party walls to adjoining units, excluding the ducts and shafts containing shared building services (refers to Sales and Purchase Agreement). 5. The Unit Site Plan has been prepared for the purpose of identifying the areas of the Unit calculated in accordance with the methodology in note (5). These areas may or may not correspond with any methodologies adopted by the relevant authorities. 6. The units are measured at typical floor in the building. Columns may vary in size depending on the floor level.

# MB

مراسي بي  
Marassi Bay

## TWO BEDROOM TYPE 02P

LEVEL	1
UNIT No	01,11
SUITE AREA	90.65 sqm
BALCONY AREA	18.59 sqm
<b>TOTAL AREA</b>	<b>109.24 sqm</b>



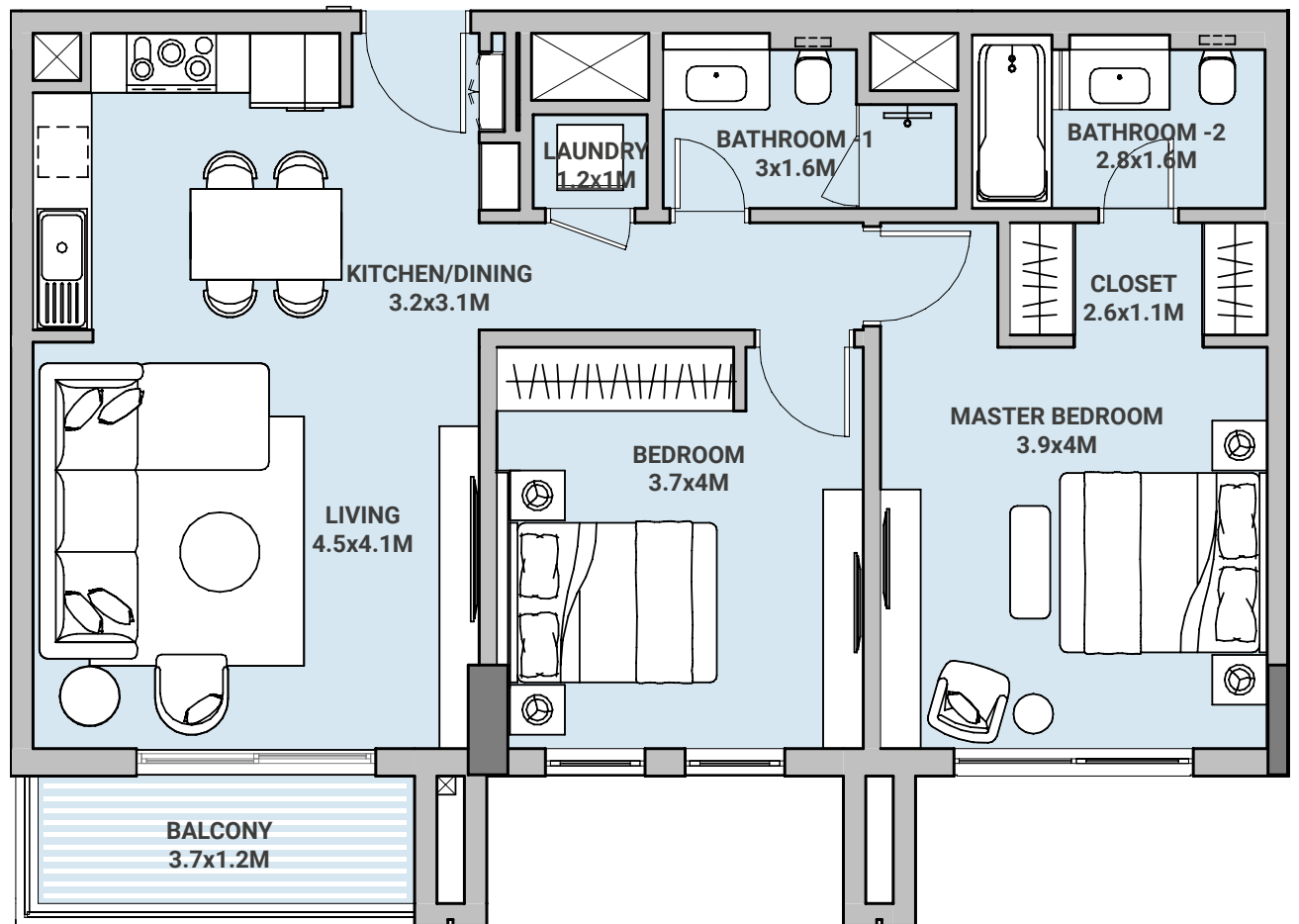
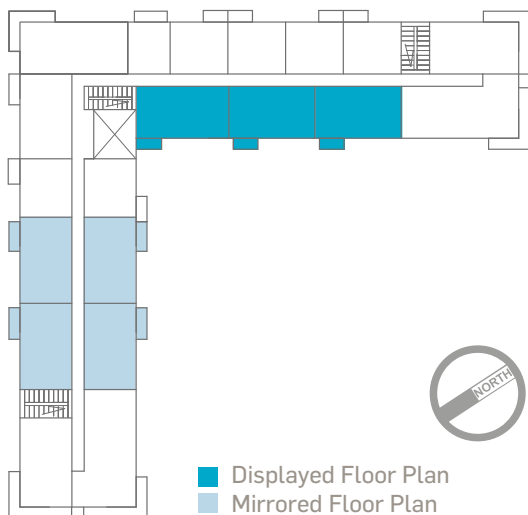
Disclaimer: 1. All room dimensions are measured to structural elements and exclude all finishes and construction tolerances. 2. All materials, dimensions, symbols, and characters indicated on the plans are indicative. 3. The attached plans are for marketing purposes only. Actual suite area may vary from the stated area. Drawings not to scale. The developer reserves the right to make revisions. 4. The areas specified in this unit plan have been calculated based on Bahrain Property Measurement system (BPMS), in general as per the following standards: Inside face of all bounding walls, all centerline of any party walls to adjoining units, excluding the ducts and shafts containing shared building services (refers to Sales and Purchase Agreement). 5. The Unit Site Plan has been prepared for the purpose of identifying the areas of the Unit calculated in accordance with the methodology in note (5). These areas may or may not correspond with any methodologies adopted by the relevant authorities. 6. The units are measured at typical floor in the building. Columns may vary in size depending on the floor level.

# MB

مراسي بي  
Marassi Bay

## TWO BEDROOM TYPE 3

LEVEL	2-10
UNIT No	2,3,14,15,16,18,19
SUITE AREA	87.57 sqm
BALCONY AREA	5.05 sqm
<b>TOTAL AREA</b>	<b>92.62 sqm</b>



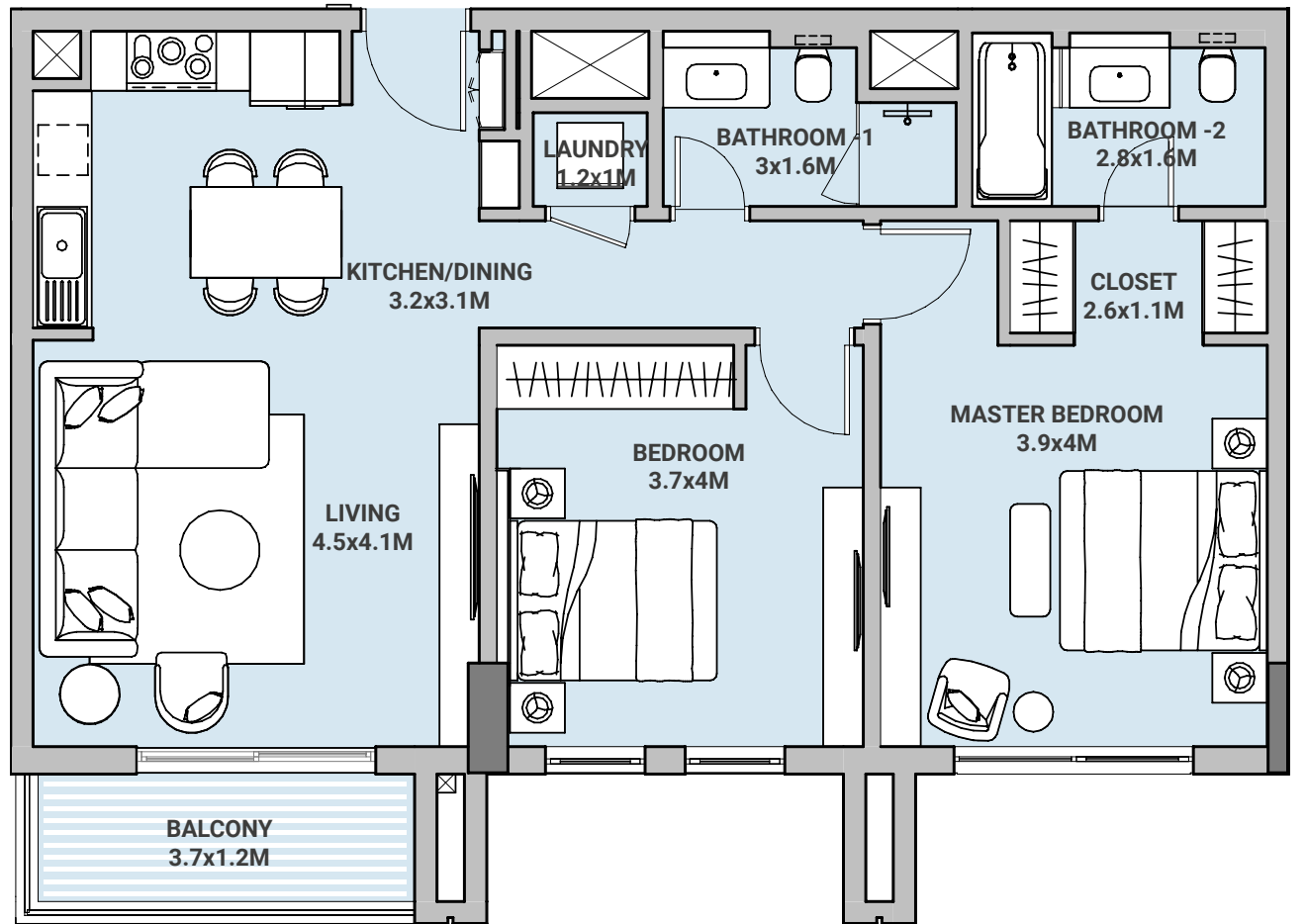
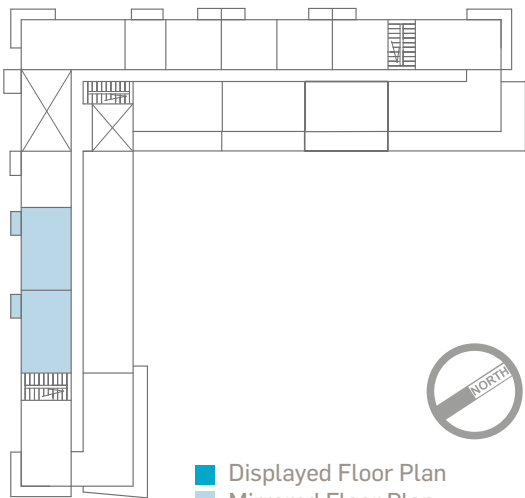
Disclaimer: 1. All room dimensions are measured to structural elements and exclude all finishes and construction tolerances. 2. All materials, dimensions, symbols, and characters indicated on the plans are indicative. 3. The attached plans are for marketing purposes only. Actual suite area may vary from the stated area. Drawings not to scale. The developer reserves the right to make revisions. 4. The areas specified in this unit plan have been calculated based on Bahrain Property Measurement system (BPMS), in general as per the following standards: Inside face of all bounding walls, all centerline of any party walls to adjoining units, excluding the ducts and shafts containing shared building services (refers to Sales and Purchase Agreement). 5. The Unit Site Plan has been prepared for the purpose of identifying the areas of the Unit calculated in accordance with the methodology in note (5). These areas may or may not correspond with any methodologies adopted by the relevant authorities. 6. The units are measured at typical floor in the building. Columns may vary in size depending on the floor level.

# MB

مراسي بي  
Marassi Bay

## TWO BEDROOM TYPE 3

LEVEL	1
UNIT No	2,3
SUITE AREA	87.55 sqm
BALCONY AREA	5.05 sqm
<b>TOTAL AREA</b>	<b>92.60 sqm</b>



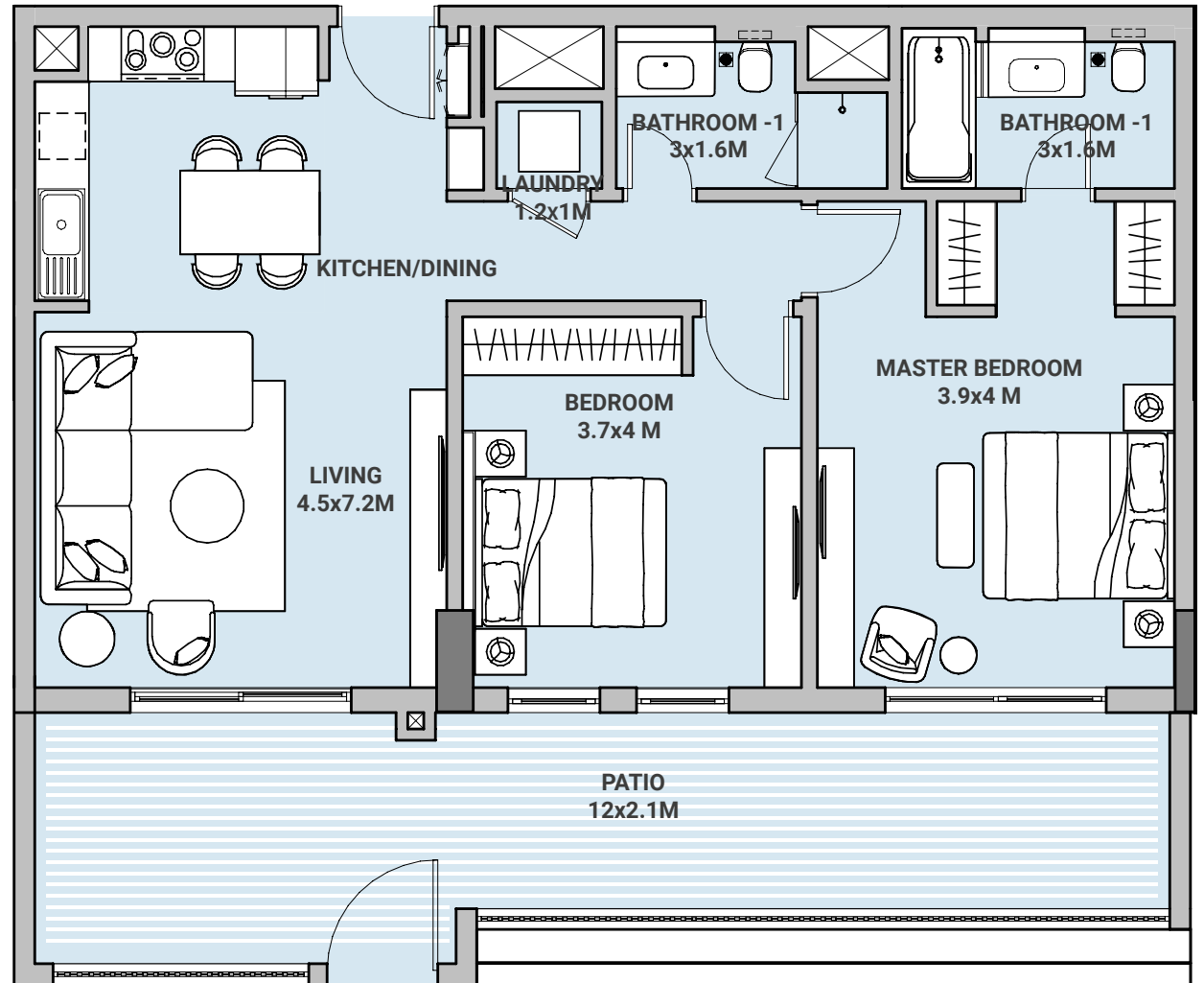
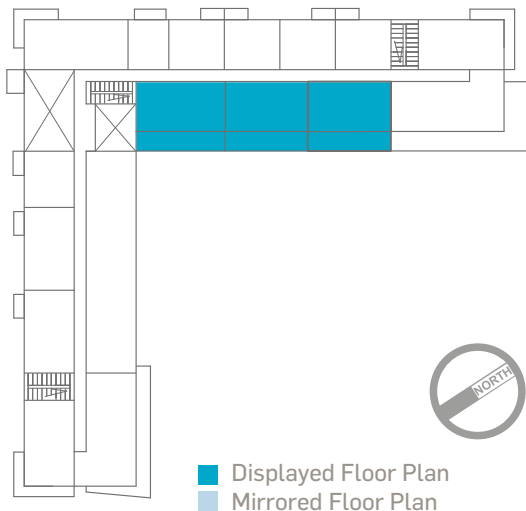
Disclaimer: 1. All room dimensions are measured to structural elements and exclude all finishes and construction tolerances. 2. All materials, dimensions, symbols, and characters indicated on the plans are indicative. 3. The attached plans are for marketing purposes only. Actual suite area may vary from the stated area. Drawings not to scale. The developer reserves the right to make revisions. 4. The areas specified in this unit plan have been calculated based on Bahrain Property Measurement system (BPMS), in general as per the following standards: Inside face of all bounding walls, all centerline of any party walls to adjoining units, excluding the ducts and shafts containing shared building services (refers to Sales and Purchase Agreement). 5. The Unit Site Plan has been prepared for the purpose of identifying the areas of the Unit calculated in accordance with the methodology in note (5). These areas may or may not correspond with any methodologies adopted by the relevant authorities. 6. The units are measured at typical floor in the building. Columns may vary in size depending on the floor level.

# MB

مراسي بي  
Marassi Bay

## TWO BEDROOM TYPE 3P

LEVEL	1
UNIT No	13,14,15
SUITE AREA	89.89 sqm
BALCONY AREA	31.24 sqm
TOTAL AREA	121.13 sqm



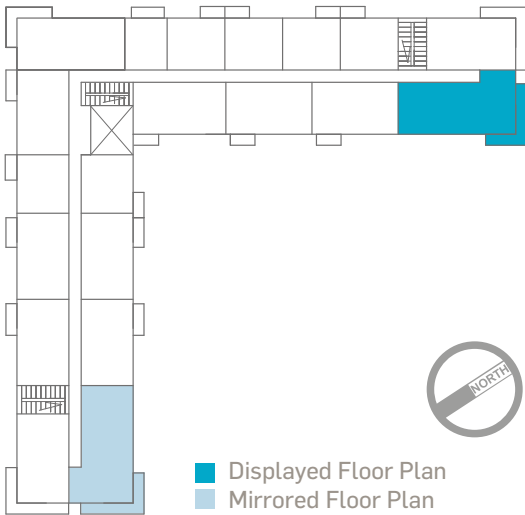
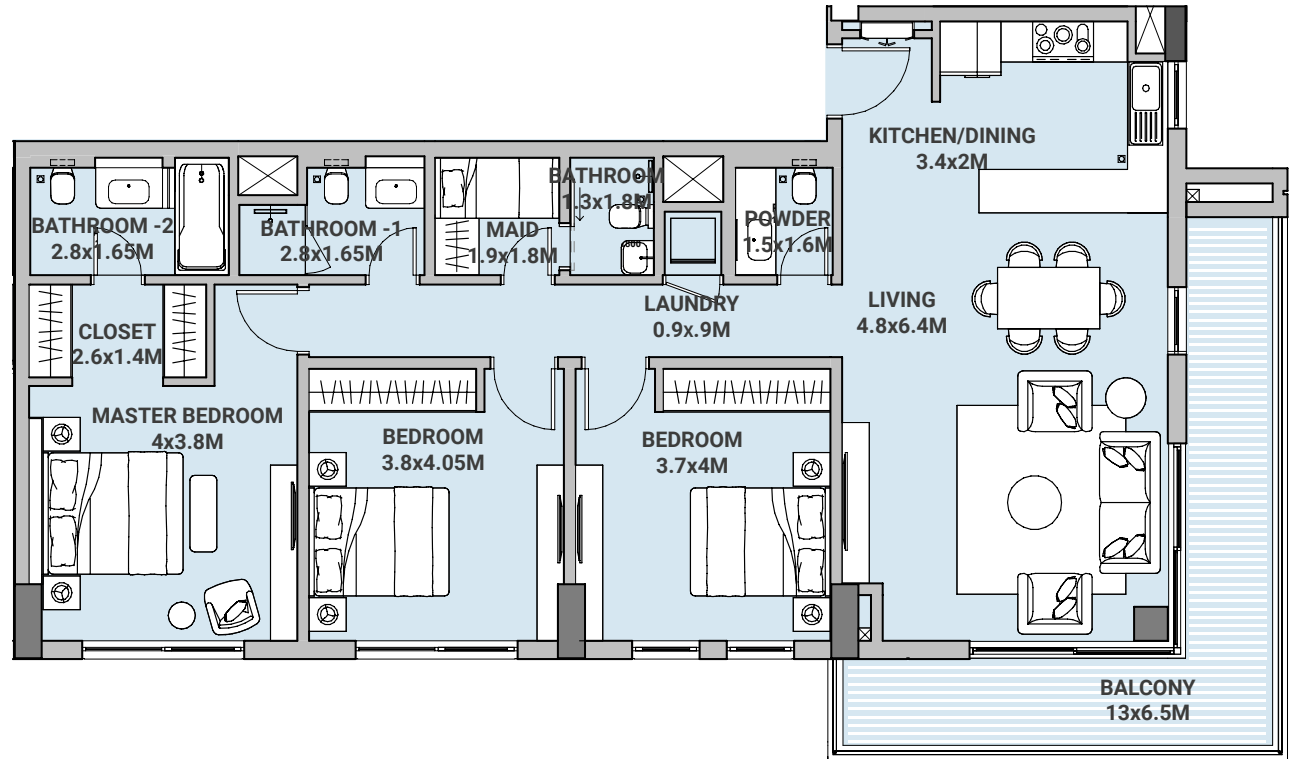
Disclaimer: 1. All room dimensions are measured to structural elements and exclude all finishes and construction tolerances. 2. All materials, dimensions, symbols, and characters indicated on the plans are indicative. 3. The attached plans are for marketing purposes only. Actual suite area may vary from the stated area. Drawings not to scale. The developer reserves the right to make revisions. 4. The areas specified in this unit plan have been calculated based on Bahrain Property Measurement system (BPMS), in general as per the following standards: Inside face of all bounding walls, all centerline of any party walls to adjoining units, excluding the ducts and shafts containing shared building services (refers to Sales and Purchase Agreement). 5. The Unit Site Plan has been prepared for the purpose of identifying the areas of the Unit calculated in accordance with the methodology in note (5). These areas may or may not correspond with any methodologies adopted by the relevant authorities. 6. The units are measured at typical floor in the building. Columns may vary in size depending on the floor level.

# MB

مراسي بي  
Marassi Bay

## THREE BEDROOM TYPE A

LEVEL	2-10
UNIT No	13, 20
SUITE AREA	131.21 sqm
BALCONY AREA	17.99 sqm
<b>TOTAL AREA</b>	<b>149.20 sqm</b>



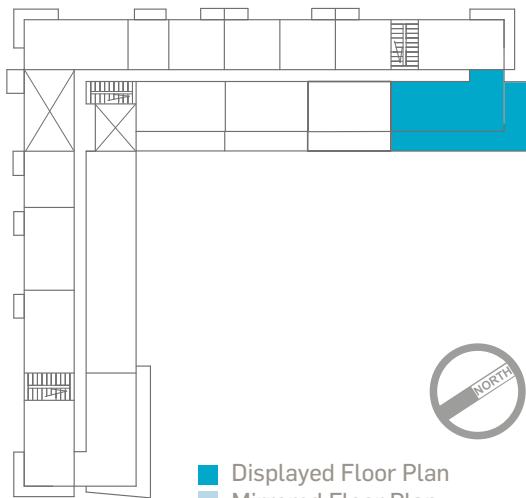
Disclaimer: 1. All room dimensions are measured to structural elements and exclude all finishes and construction tolerances. 2. All materials, dimensions, symbols, and characters indicated on the plans are indicative. 3. The attached plans are for marketing purposes only. Actual suite area may vary from the stated area. Drawings not to scale. The developer reserves the right to make revisions. 4. The areas specified in this unit plan have been calculated based on Bahrain Property Measurement system (BPMS), in general as per the following standards: Inside face of all bounding walls, all centerline of any party walls to adjoining units, excluding the ducts and shafts containing shared building services (refers to Sales and Purchase Agreement). 5. The Unit Site Plan has been prepared for the purpose of identifying the areas of the Unit calculated in accordance with the methodology in note (5). These areas may or may not correspond with any methodologies adopted by the relevant authorities. 6. The units are measured at typical floor in the building. Columns may vary in size depending on the floor level.

# MB

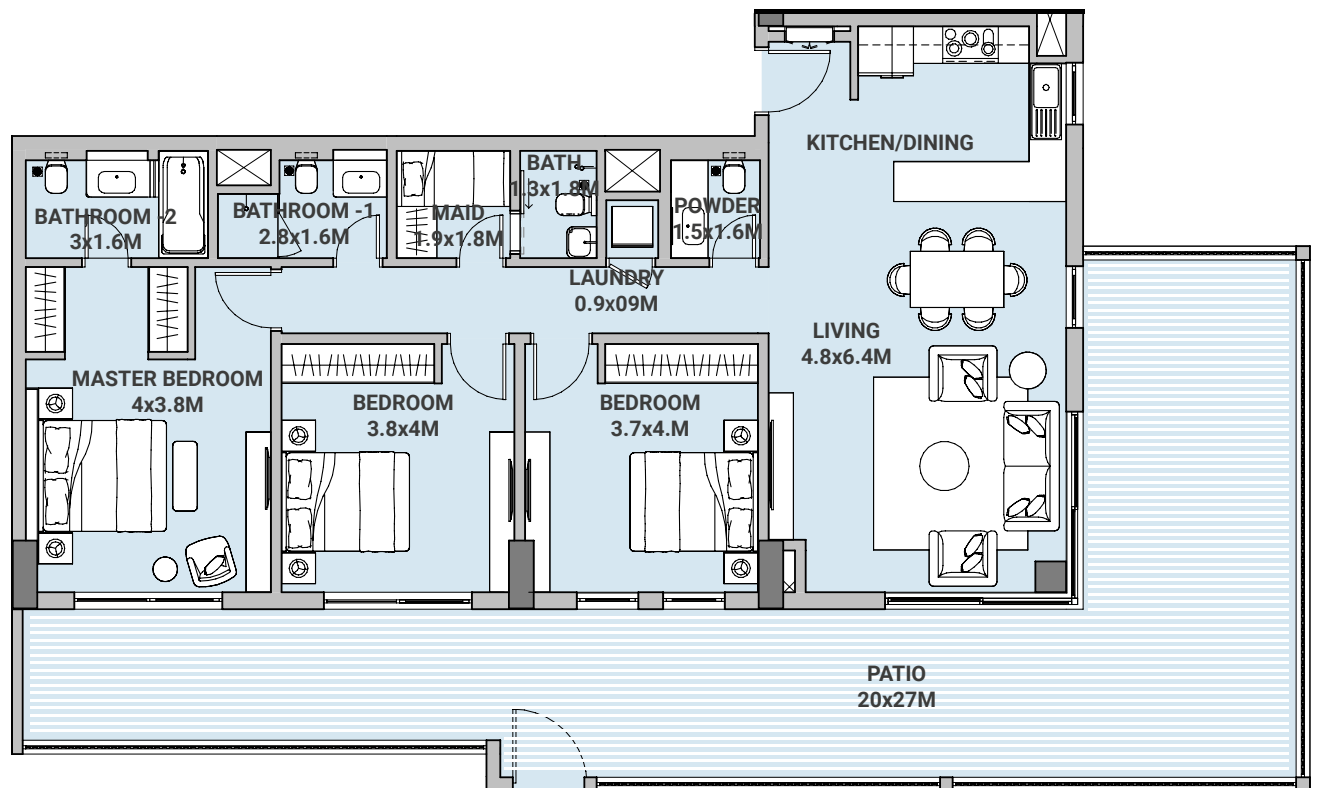
مراسي بي  
Marassi Bay

## THREE BEDROOM TYPE A1 P

LEVEL	1
UNIT No	12
SUITE AREA	132.76 sqm
BALCONY AREA	117.82 sqm
TOTAL AREA	250.58 sqm



■ Displayed Floor Plan  
■ Mirrored Floor Plan



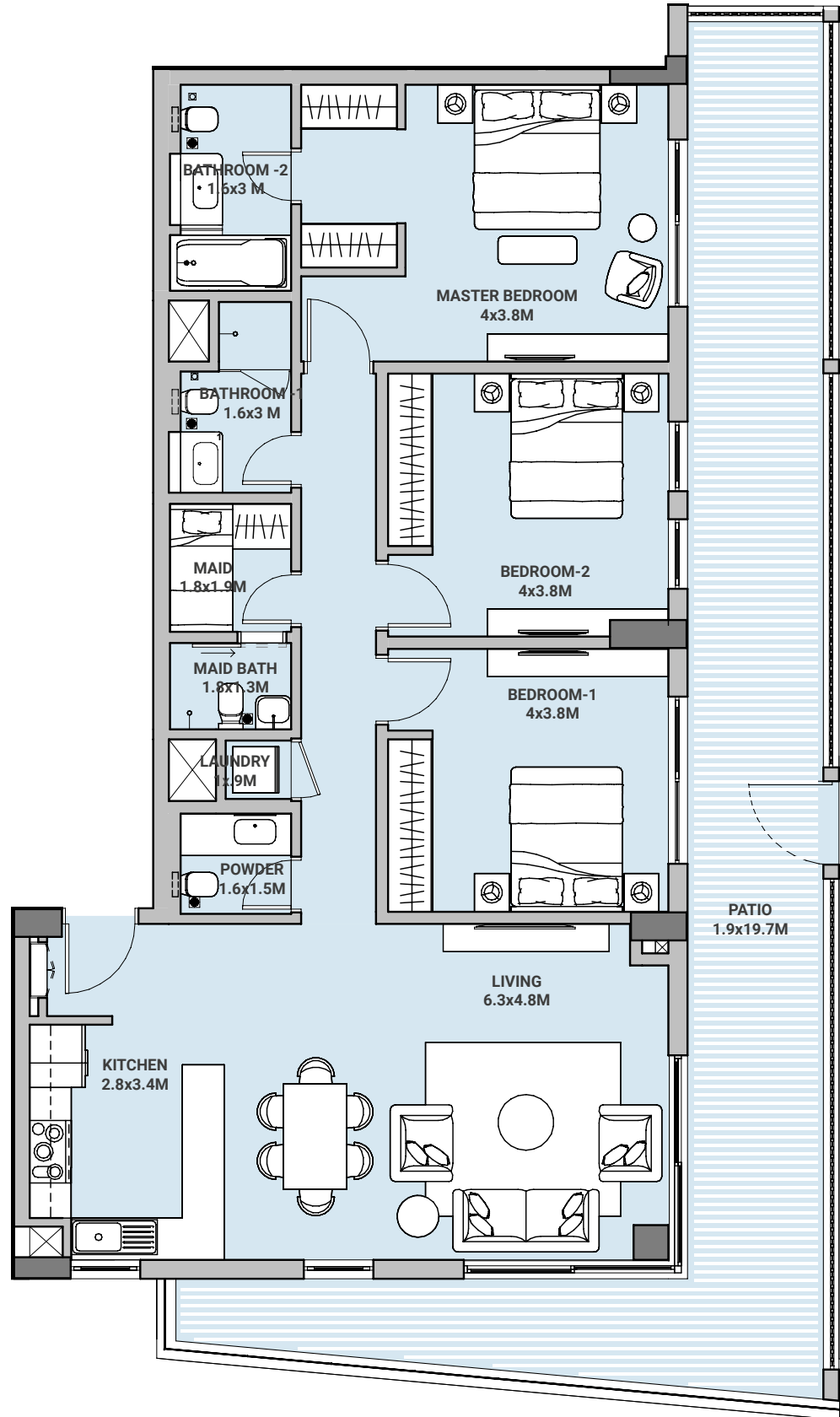
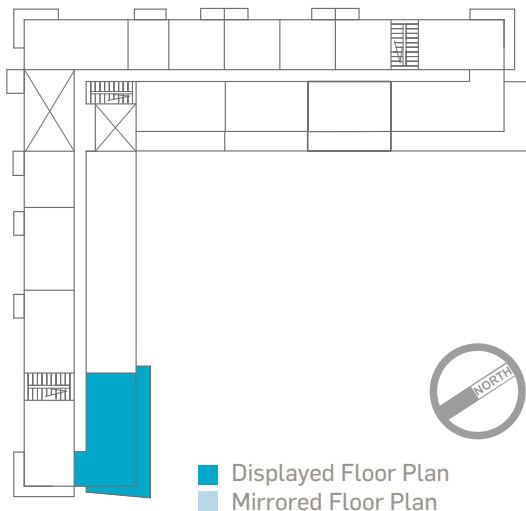
Disclaimer: 1. All room dimensions are measured to structural elements and exclude all finishes and construction tolerances. 2. All materials, dimensions, symbols, and characters indicated on the plans are indicative. 3. The attached plans are for marketing purposes only. Actual suite area may vary from the stated area. Drawings not to scale. The developer reserves the right to make revisions. 4. The areas specified in this unit plan have been calculated based on Bahrain Property Measurement system (BPMS), in general as per the following standards: Inside face of all bounding walls, all centerline of any party walls to adjoining units, excluding the ducts and shafts containing shared building services (refers to Sales and Purchase Agreement). 5. The Unit Site Plan has been prepared for the purpose of identifying the areas of the Unit calculated in accordance with the methodology in note (5). These areas may or may not correspond with any methodologies adopted by the relevant authorities. 6. The units are measured at typical floor in the building. Columns may vary in size depending on the floor level.

# MB

مراسي بي  
Marassi Bay

## THREE BEDROOM TYPE A2 P

LEVEL	1
UNIT No	16
SUITE AREA	132.05 sqm
BALCONY AREA	50.84 sqm
TOTAL AREA	182.89 sqm



Disclaimer: 1. All room dimensions are measured to structural elements and exclude all finishes and construction tolerances. 2. All materials, dimensions, symbols, and characters indicated on the plans are indicative. 3. The attached plans are for marketing purposes only. Actual suite area may vary from the stated area. Drawings not to scale. The developer reserves the right to make revisions. 4. The areas specified in this unit plan have been calculated based on Bahrain Property Measurement system (BPMS), in general as per the following standards: Inside face of all bounding walls, all centerline of any party walls to adjoining units, excluding the ducts and shafts containing shared building services (refers to Sales and Purchase Agreement). 5. The Unit Site Plan has been prepared for the purpose of identifying the areas of the Unit calculated in accordance with the methodology in note (5). These areas may or may not correspond with any methodologies adopted by the relevant authorities. 6. The units are measured at typical floor in the building. Columns may vary in size depending on the floor level.