



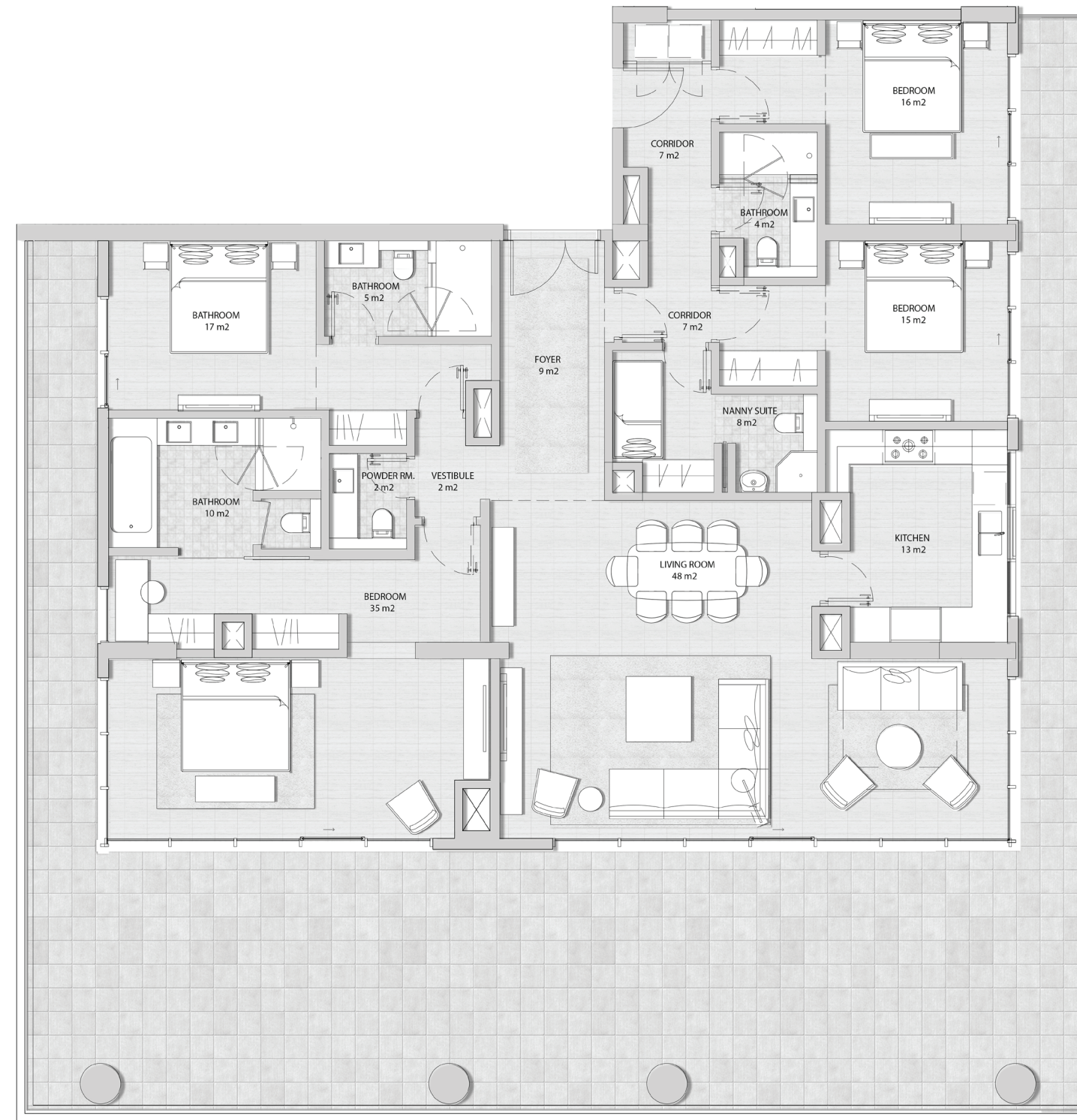
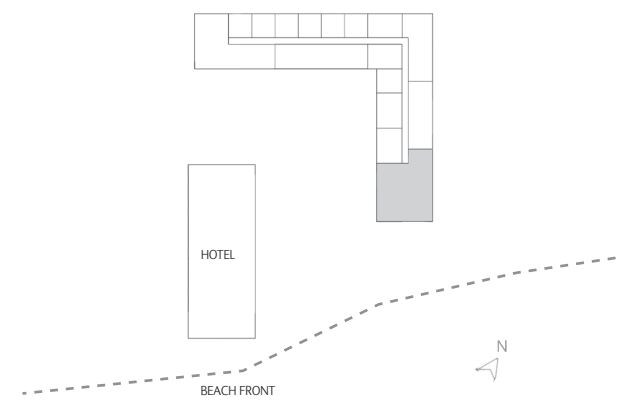
THE ADDRESS

RESIDENCES
MARASSI AL BAHRAIN

PENTHOUSE TYPE 01

SUITE AREA	209 sqm
BALCONY AREA	135 sqm
TOTAL AREA	344 sqm

Disclaimer: 1. All room dimensions are measured to structural elements and exclude all finishes and construction tolerances. 2. All dimensions have been provided by our consultant architects. 3. All materials, dimensions and drawings are approximate. Information is subject to change without notice. 4. The attached plans are for marketing purposes only. Actual suite area may vary from the stated area. Drawings not to scale. The developer reserves the right to make revisions. 5. The suite area is measured as the area bounded by the centrelines of demising of party walls separating one unit from another unit, the centreline surface of the exterior walls, and the centreline surface of the corridor wall enclosing and abutting the Unit. 6. The balcony area is measured as the area bounded by the inner face of a solid masonry demising or party walls separating one unit from another unit, the centreline of the enclosing guard and the centreline of the suite abutting the balcony. Where a balcony is split to service two adjacent units and the split is constructed using a glazed panel, the balcony area of each unit is measured to the centreline of the glazed panel. 7. The units are measured at typical floor in the building. Columns may vary in size depending on the floor level.



مراسي البحرين
MARASSI AL BAHRAIN



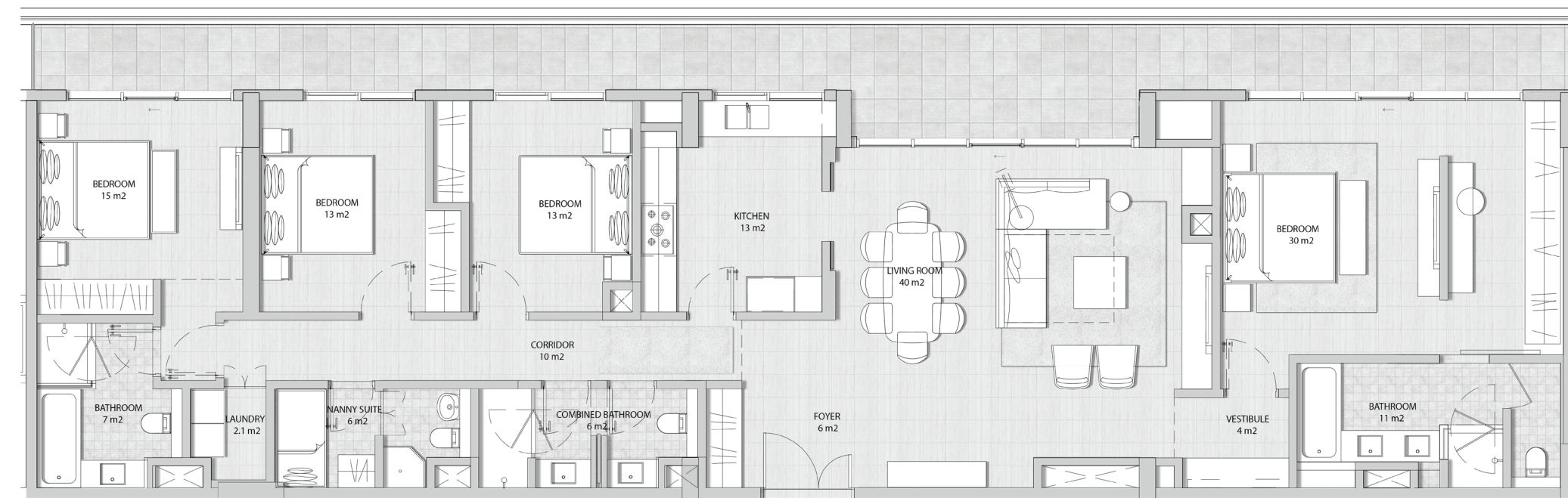


THE ADDRESS

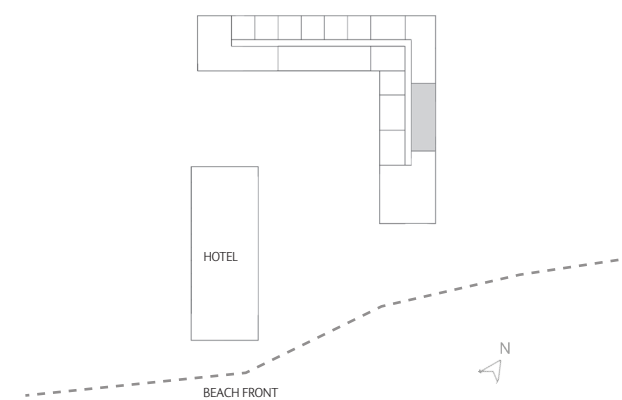
RESIDENCES
MARASSI AL BAHRAIN

PENTHOUSE TYPE 02

SUITE AREA	192 sqm
BALCONY AREA	146 sqm
TOTAL AREA	237 sqm



Disclaimer: 1. All room dimensions are measured to structural elements and exclude all finishes and construction tolerances. 2. All dimensions have been provided by our consultant architects. 3. All materials, dimensions and drawings are approximate. Information is subject to change without notice. 4. The attached plans are for marketing purposes only. Actual suite area may vary from the stated area. Drawings not to scale. The developer reserves the right to make revisions. 5. The suite area is measured as the area bounded by the centrelines of demising or party walls separating one unit from another unit, the centreline surface of the exterior walls, and the centreline surface of the corridor wall enclosing and abutting the Unit. 6. The balcony area is measured as the area bounded by the inner face of a solid masonry demising or party walls separating one unit from another unit, the centreline of the enclosing guard and the centreline of the suite abutting the balcony. Where a balcony is split to service two adjacent units and the split is constructed using a glazed panel, the balcony area of each unit is measured to the centreline of the glazed panel. 7. The units are measured at typical floor in the building. Columns may vary in size depending on the floor level.



مراسي البحرين
MARASSI AL BAHRAIN

EAGLE
HILLS



THE ADDRESS

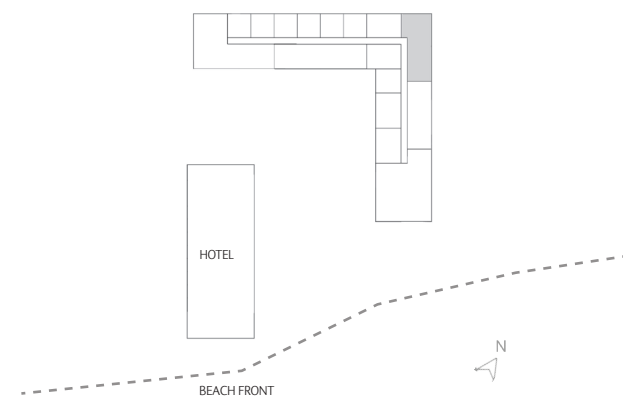
RESIDENCES
MARASSI AL BAHRAIN

PENTHOUSE TYPE 03

SUITE AREA	242 sqm
BALCONY AREA	49 sqm
TOTAL AREA	291 sqm

Disclaimer: 1. All room dimensions are measured to structural elements and exclude all finishes and construction tolerances. 2. All dimensions have been provided by our consultant architects. 3. All materials, dimensions and drawings are approximate. Information is subject to change without notice. 4. The attached plans are for marketing purposes only. Actual suite area may vary from the stated area. Drawings not to scale. The developer reserves the right to make revisions. 5. The suite area is measured as the area bounded by the centrelines of demising or party walls separating one unit from another unit, the centreline surface of the exterior walls, and the centreline surface of the corridor wall enclosing and abutting the Unit. 6. The balcony area is measured as the area bounded by the inner face of a solid masonry demising or party walls separating one unit from another unit, the centreline of the enclosing guard and the centreline of the suite abutting the balcony. Where a balcony is split to service two adjacent units and the split is constructed using a glazed panel, the balcony area of each unit is measured to the centreline of the glazed panel. 7. The units are measured at typical floor in the building. Columns may vary in size depending on the floor level.

مراسي البحرين
MARASSI AL BAHRAIN



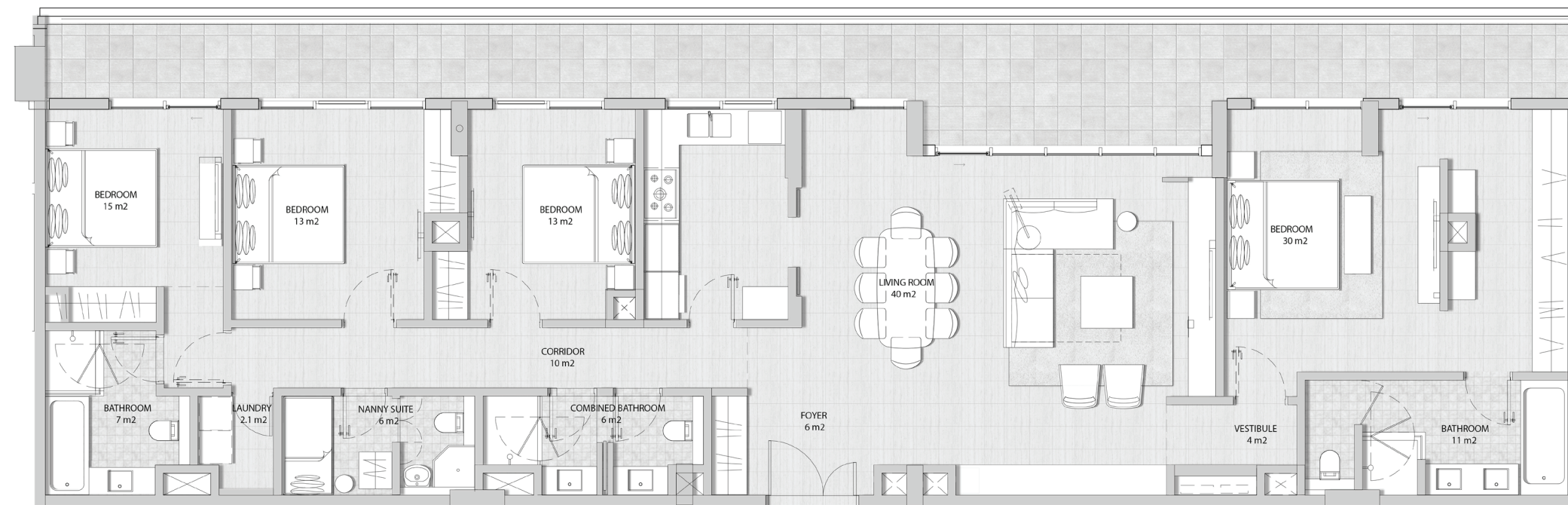


THE ADDRESS

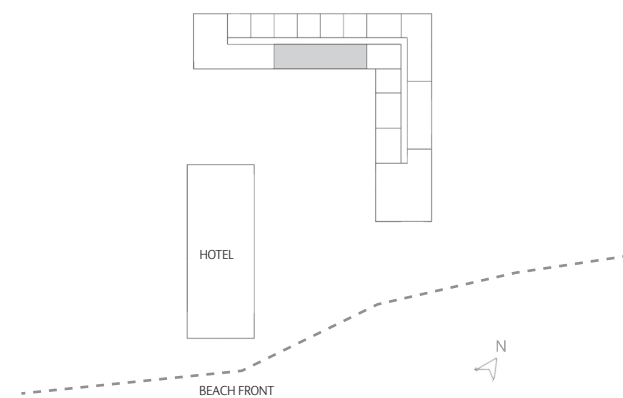
RESIDENCES
MARASSI AL BAHRAIN

PENTHOUSE TYPE 04

SUITE AREA	193 sqm
BALCONY AREA	50 sqm
TOTAL AREA	243 sqm



Disclaimer: 1. All room dimensions are measured to structural elements and exclude all finishes and construction tolerances. 2. All dimensions have been provided by our consultant architects. 3. All materials, dimensions and drawings are approximate. Information is subject to change without notice. 4. The attached plans are for marketing purposes only. Actual suite area may vary from the stated area. Drawings not to scale. The developer reserves the right to make revisions. 5. The suite area is measured as the area bounded by the centrelines of demising or party walls separating one unit from another unit, the centreline surface of the exterior walls, and the centreline surface of the corridor wall enclosing and abutting the Unit. 6. The balcony area is measured as the area bounded by the inner face of a solid masonry demising or party walls separating one unit from another unit, the centreline of the enclosing guard and the centreline of the suite abutting the balcony. Where a balcony is split to service two adjacent units and the split is constructed using a glazed panel, the balcony area of each unit is measured to the centreline of the glazed panel. 7. The units are measured at typical floor in the building. Columns may vary in size depending on the floor level.



مراسي البحرين
MARASSI AL BAHRAIN



EAGLE
HILLS



THE ADDRESS

RESIDENCES

MARASSI AL BAHRAIN

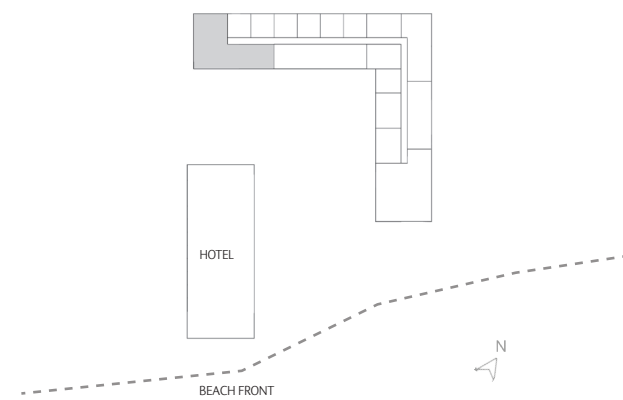
PENTHOUSE TYPE 05

SUITE AREA 284 sqm

BALCONY AREA 127 sqm

TOTAL AREA 411 sqm

Disclaimer: 1. All room dimensions are measured to structural elements and exclude all finishes and construction tolerances. 2. All dimensions have been provided by our consultant architects. 3. All materials, dimensions and drawings are approximate. Information is subject to change without notice. 4. The attached plans are for marketing purposes only. Actual suite area may vary from the stated area. Drawings not to scale. The developer reserves the right to make revisions. 5. The suite area is measured as the area bounded by the centrelines of demising or party walls separating one unit from another unit, the centreline surface of the exterior walls, and the centreline surface of the corridor wall enclosing and abutting the Unit. 6. The balcony area is measured as the area bounded by the inner face of a solid masonry demising or party walls separating one unit from another unit, the centreline of the enclosing guard and the centreline of the suite abutting the balcony. Where a balcony is split to service two adjacent units and the split is constructed using a glazed panel, the balcony area of each unit is measured to the centreline of the glazed panel. 7. The units are measured at typical floor in the building. Columns may vary in size depending on the floor level.



مراسي البحرين
MARASSI AL BAHRAIN

