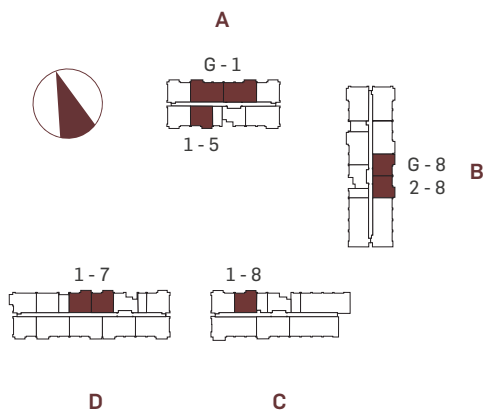
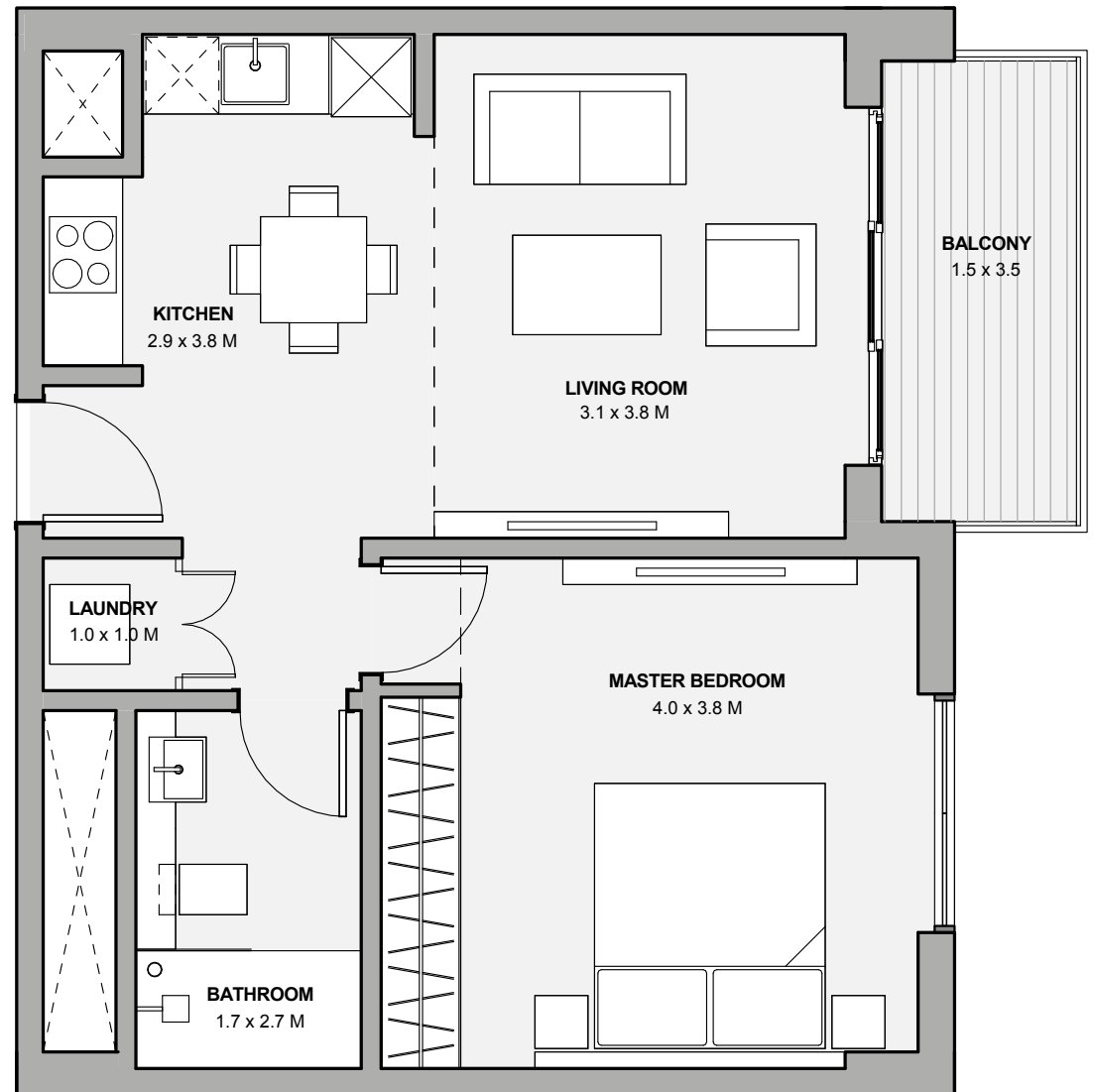


# MARASSI BOULEVARD

## ONE BEDROOM TYPE 01

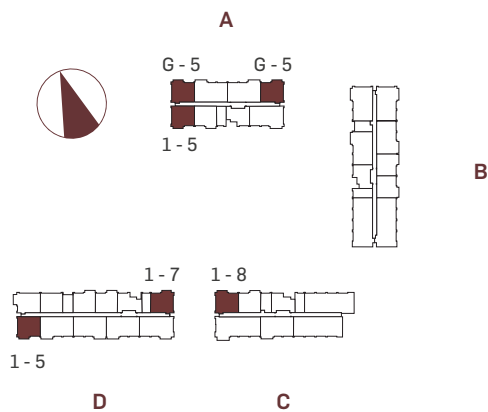
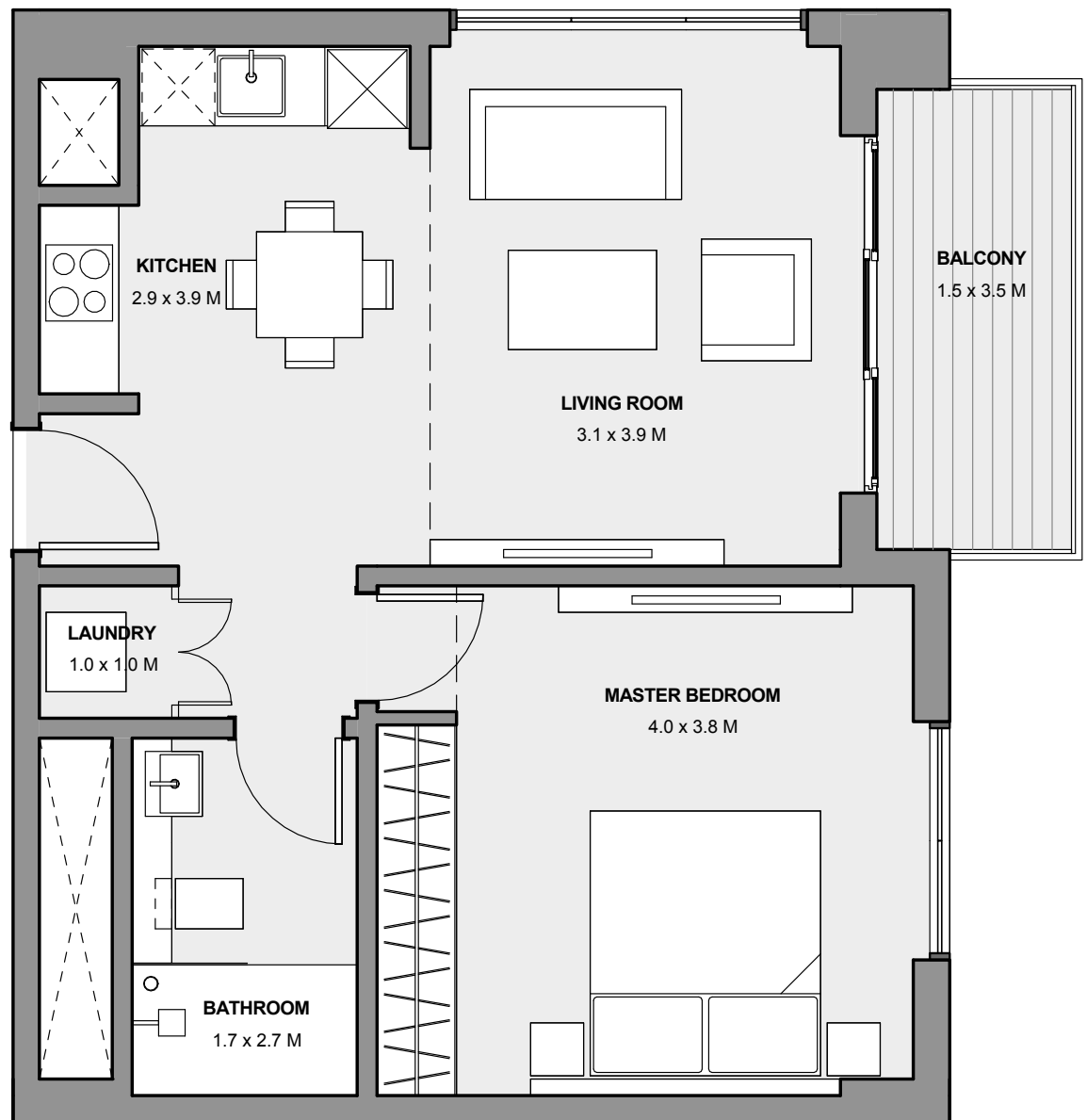
SUITE AREA	50.2 sqm
BALCONY AREA	5.4 sqm
TOTAL AREA	55.6 sqm



Disclaimer: 1. All room dimensions are measured to structural elements and exclude all finishes and construction tolerances. 2. All dimensions have been provided by our consultant architects. 3. All materials, dimensions and drawings are approximate. Information is subject to change without notice. 4. The attached plans are for marketing purposes only. Actual suite area may vary from the stated area. Drawings not to scale. The developer reserves the right to make revisions. 5. The suite area is measured as the area bounded by the centrelines of demising of party walls separating one unit from another unit, the centreline surface of the exterior walls, and the centreline surface of the corridor wall enclosing and abutting the Unit. 6. The balcony area is measured as the area bounded by the inner face of a solid masonry demising or party walls separating one unit from another unit, the centreline of the enclosing guard and the centreline of the suite abutting the balcony. Where a balcony is split to service two adjacent units and the split is constructed using a glazed panel, the balcony area of each unit is measured to the centreline of the glazed panel. 7. The units are measured at typical floor in the building. Columns may vary in size depending on the floor level. 8. The attached plans are for marketing purposes.

## ONE BEDROOM TYPE 02

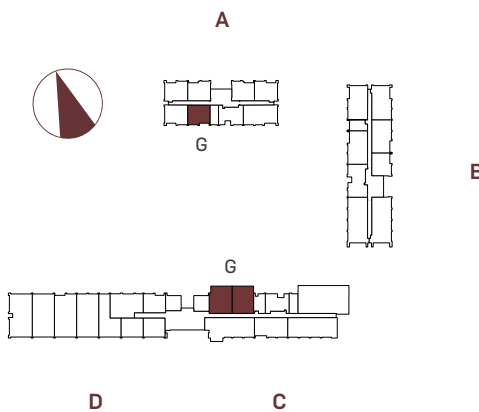
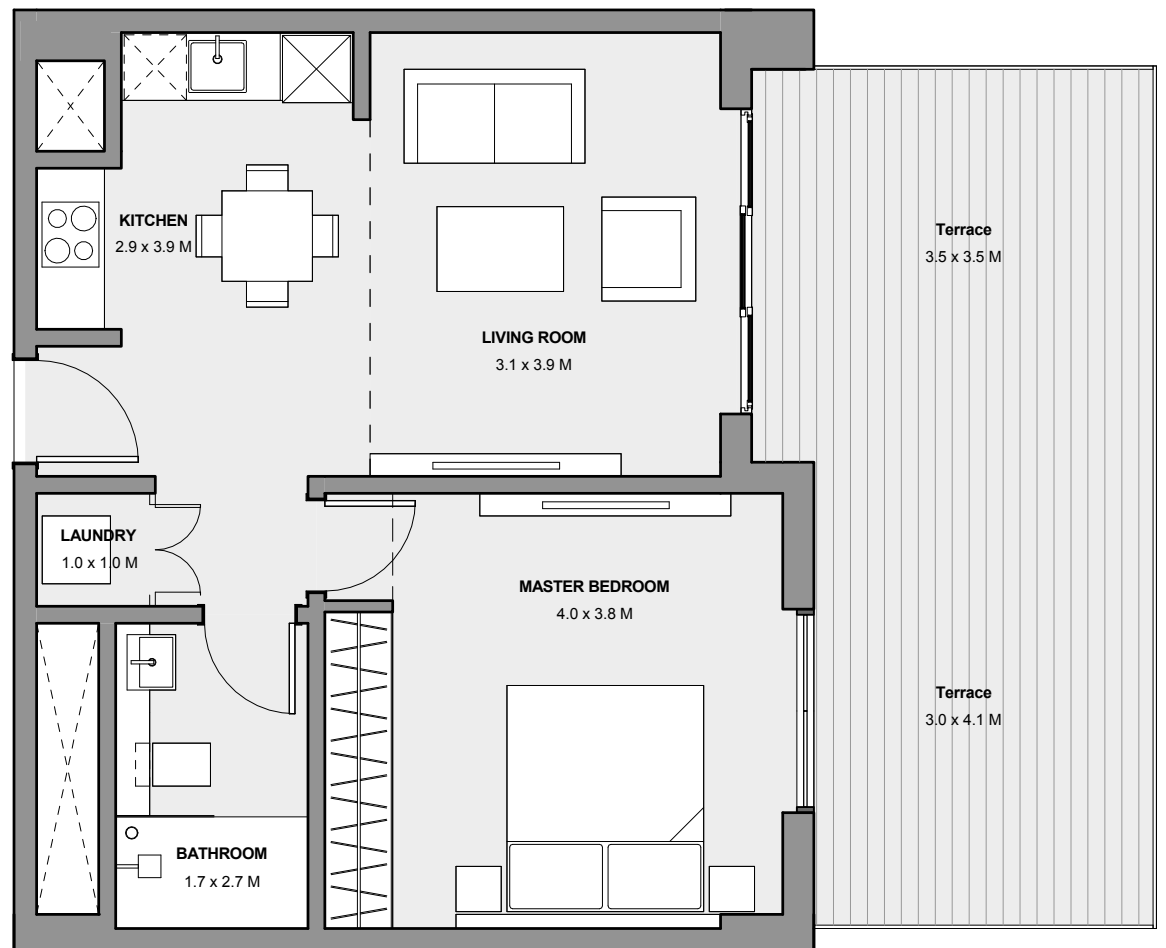
SUITE AREA	51.2 sqm
BALCONY AREA	5.3 sqm
TOTAL AREA	56.5 sqm



Disclaimer: 1. All room dimensions are measured to structural elements and exclude all finishes and construction tolerances. 2. All dimensions have been provided by our consultant architects. 3. All materials, dimensions and drawings are approximate. Information is subject to change without notice. 4. The attached plans are for marketing purposes only. Actual suite area may vary from the stated area. Drawings not to scale. The developer reserves the right to make revisions. 5. The suite area is measured as the area bounded by the centrelines of demising of party walls separating one unit from another unit, the centreline surface of the exterior walls, and the centreline surface of the corridor wall enclosing and abutting the Unit. 6. The balcony area is measured as the area bounded by the inner face of a solid masonry demising or party walls separating one unit from another unit, the centreline of the enclosing guard and the centreline of the suite abutting the balcony. Where a balcony is split to service two adjacent units and the split is constructed using a glazed panel, the balcony area of each unit is measured to the centreline of the glazed panel. 7. The units are measured at typical floor in the building. Columns may vary in size depending on the floor level. 8. The attached plans are for marketing purposes.

## ONE BEDROOM TYPE 03

SUITE AREA	50.4 sqm
BALCONY AREA	24.8 sqm
TOTAL AREA	75.2 sqm

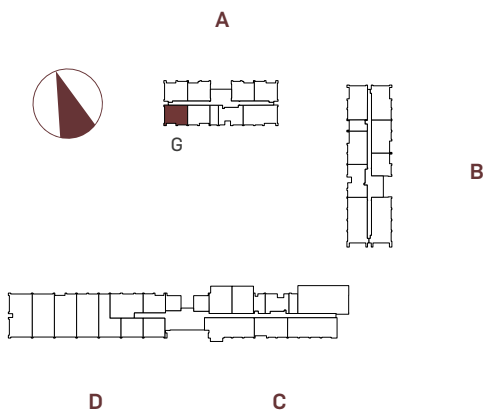
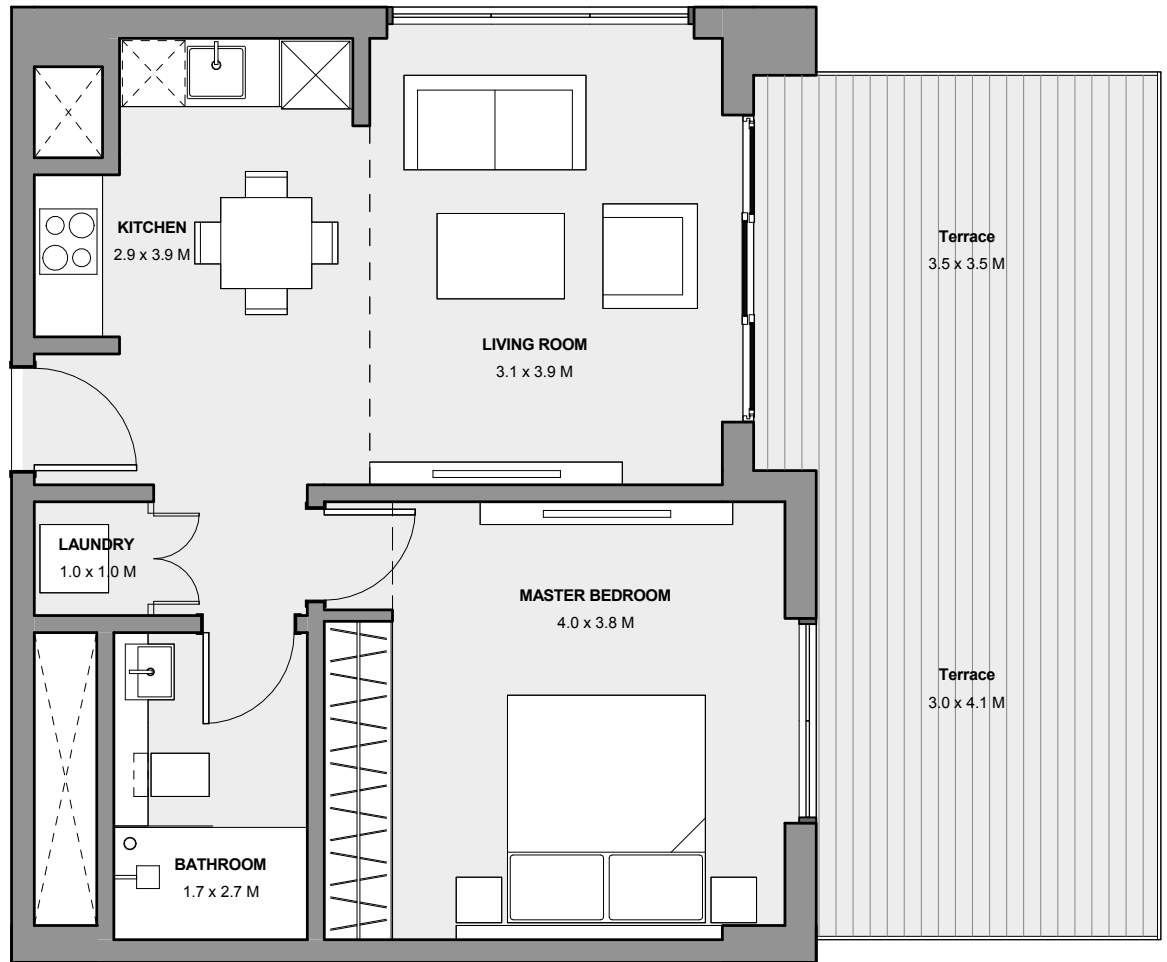


Disclaimer: 1. All room dimensions are measured to structural elements and exclude all finishes and construction tolerances. 2. All dimensions have been provided by our consultant architects. 3. All materials, dimensions and drawings are approximate. Information is subject to change without notice. 4. The attached plans are for marketing purposes only. Actual suite area may vary from the stated area. Drawings not to scale. The developer reserves the right to make revisions. 5. The suite area is measured as the area bounded by the centrelines of demising of party walls separating one unit from another unit, the centreline surface of the exterior walls, and the centreline surface of the corridor wall enclosing and abutting the Unit. 6. The balcony area is measured as the area bounded by the inner face of a solid masonry demising or party walls separating one unit from another unit, the centreline of the enclosing guard and the centreline of the suite abutting the balcony. Where a balcony is split to service two adjacent units and the split is constructed using a glazed panel, the balcony area of each unit is measured to the centreline of the glazed panel. 7. The units are measured at typical floor in the building. Columns may vary in size depending on the floor level. 8. The attached plans are for marketing purposes.

# MARASSI BOULEVARD

## ONE BEDROOM TYPE 04

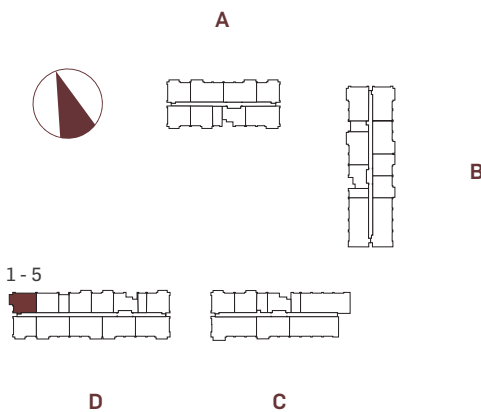
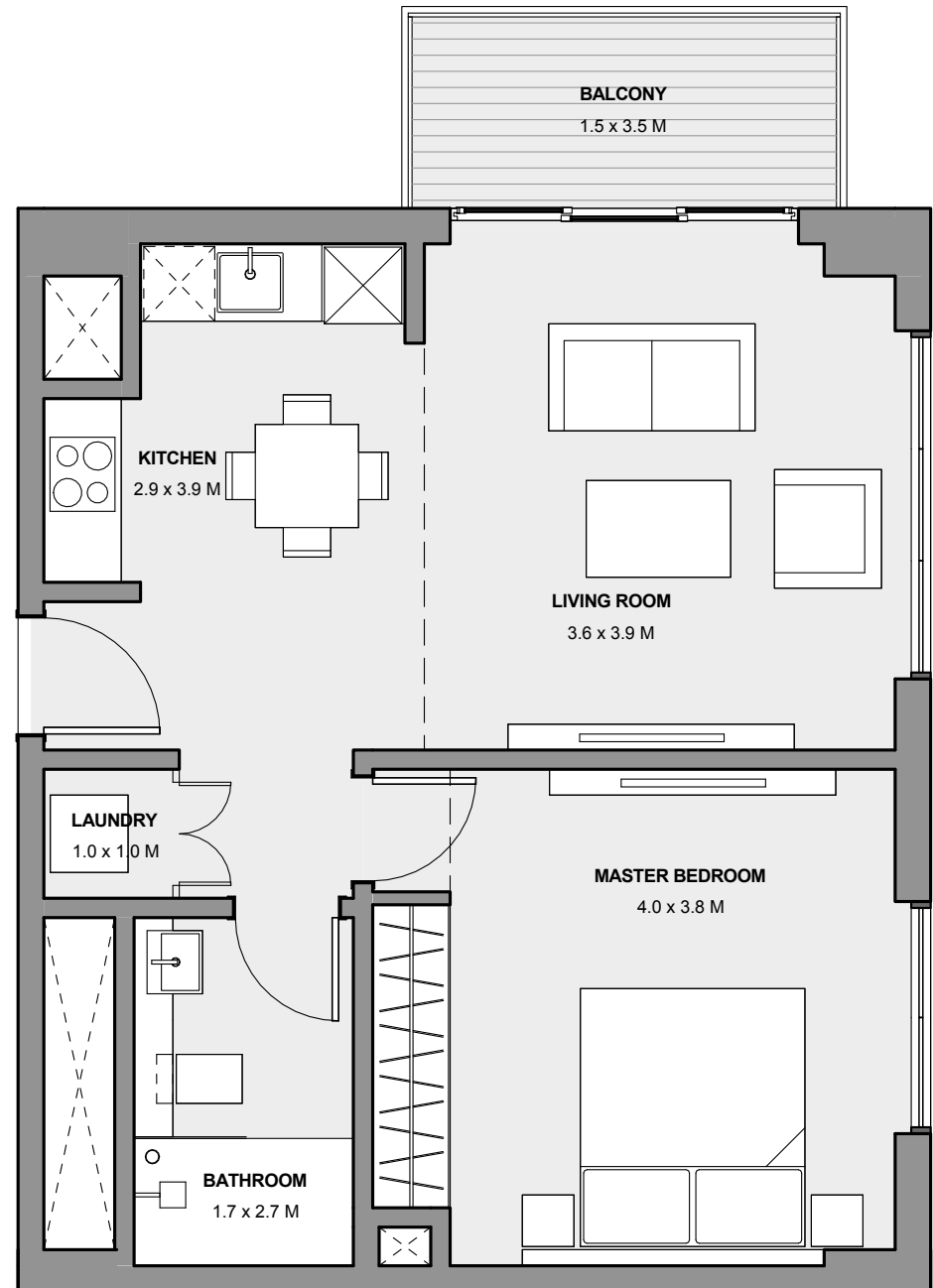
SUITE AREA	51.4 sqm
BALCONY AREA	23.3 sqm
TOTAL AREA	74.7 sqm



Disclaimer: 1. All room dimensions are measured to structural elements and exclude all finishes and construction tolerances. 2. All dimensions have been provided by our consultant architects. 3. All materials, dimensions and drawings are approximate. Information is subject to change without notice. 4. The attached plans are for marketing purposes only. Actual suite area may vary from the stated area. Drawings not to scale. The developer reserves the right to make revisions. 5. The suite area is measured as the area bounded by the centrelines of demising of party walls separating one unit from another unit, the centreline surface of the exterior walls, and the centreline surface of the corridor wall enclosing and abutting the Unit. 6. The balcony area is measured as the area bounded by the inner face of a solid masonry demising or party walls separating one unit from another unit, the centreline of the enclosing guard and the centreline of the suite abutting the balcony. Where a balcony is split to service two adjacent units and the split is constructed using a glazed panel, the balcony area of each unit is measured to the centreline of the glazed panel. 7. The units are measured at typical floor in the building. Columns may vary in size depending on the floor level. 8. The attached plans are for marketing purposes.

## ONE BEDROOM TYPE 06

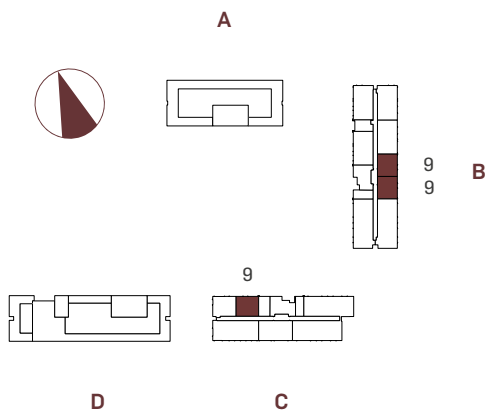
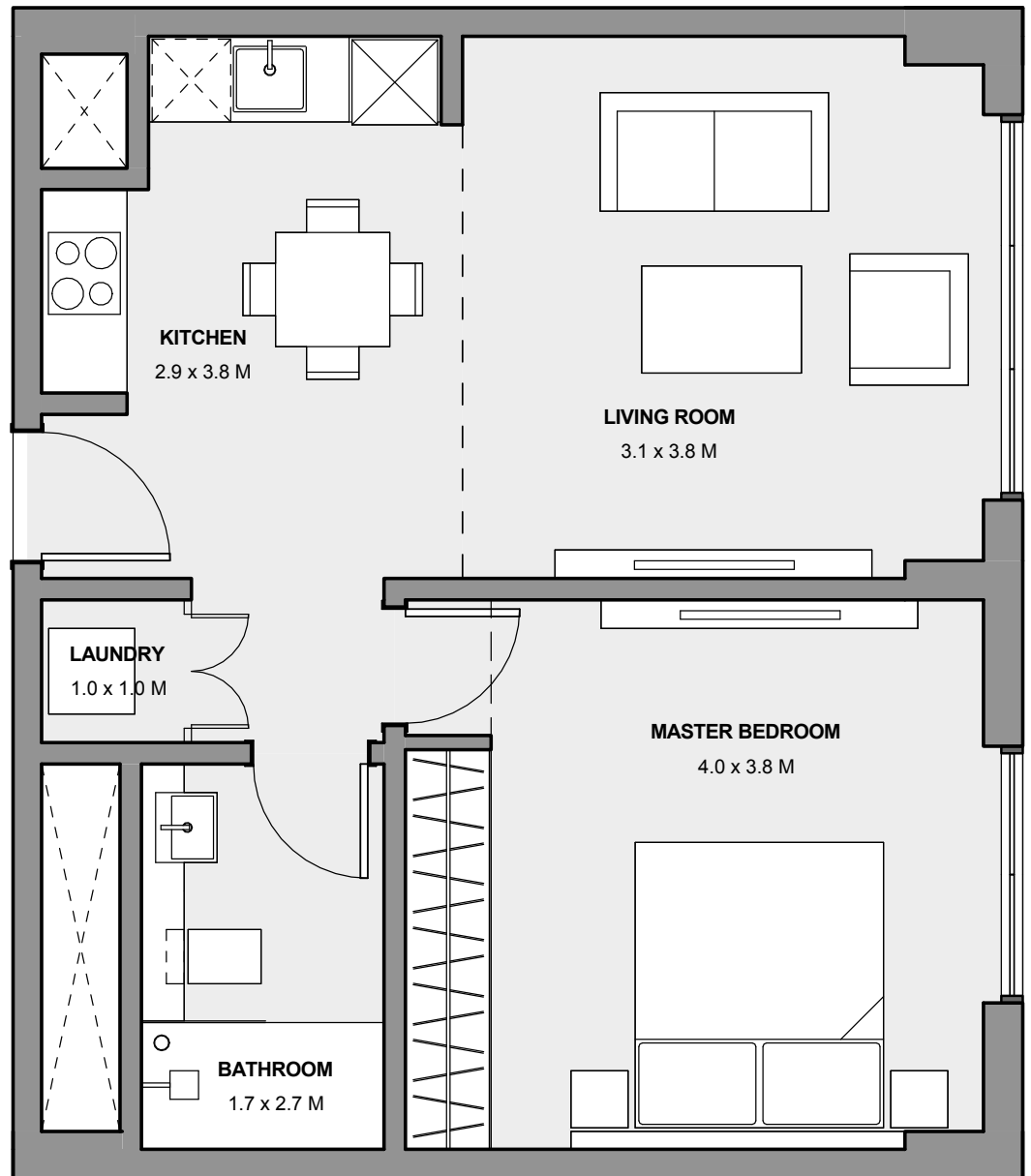
SUITE AREA	53.7 sqm
BALCONY AREA	5.3 sqm
TOTAL AREA	59.0 sqm



# MARASSI BOULEVARD

## ONE BEDROOM TYPE 09

SUITE AREA	52.1 sqm
BALCONY AREA	0.00 sqm
TOTAL AREA	52.1 sqm

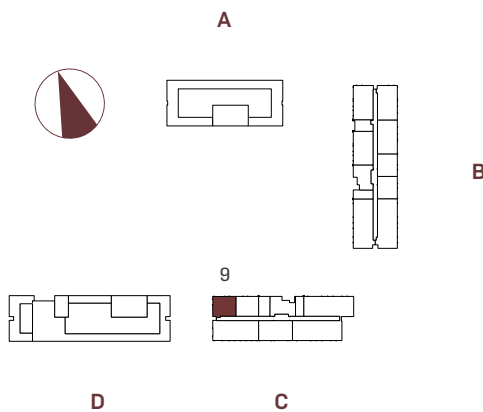
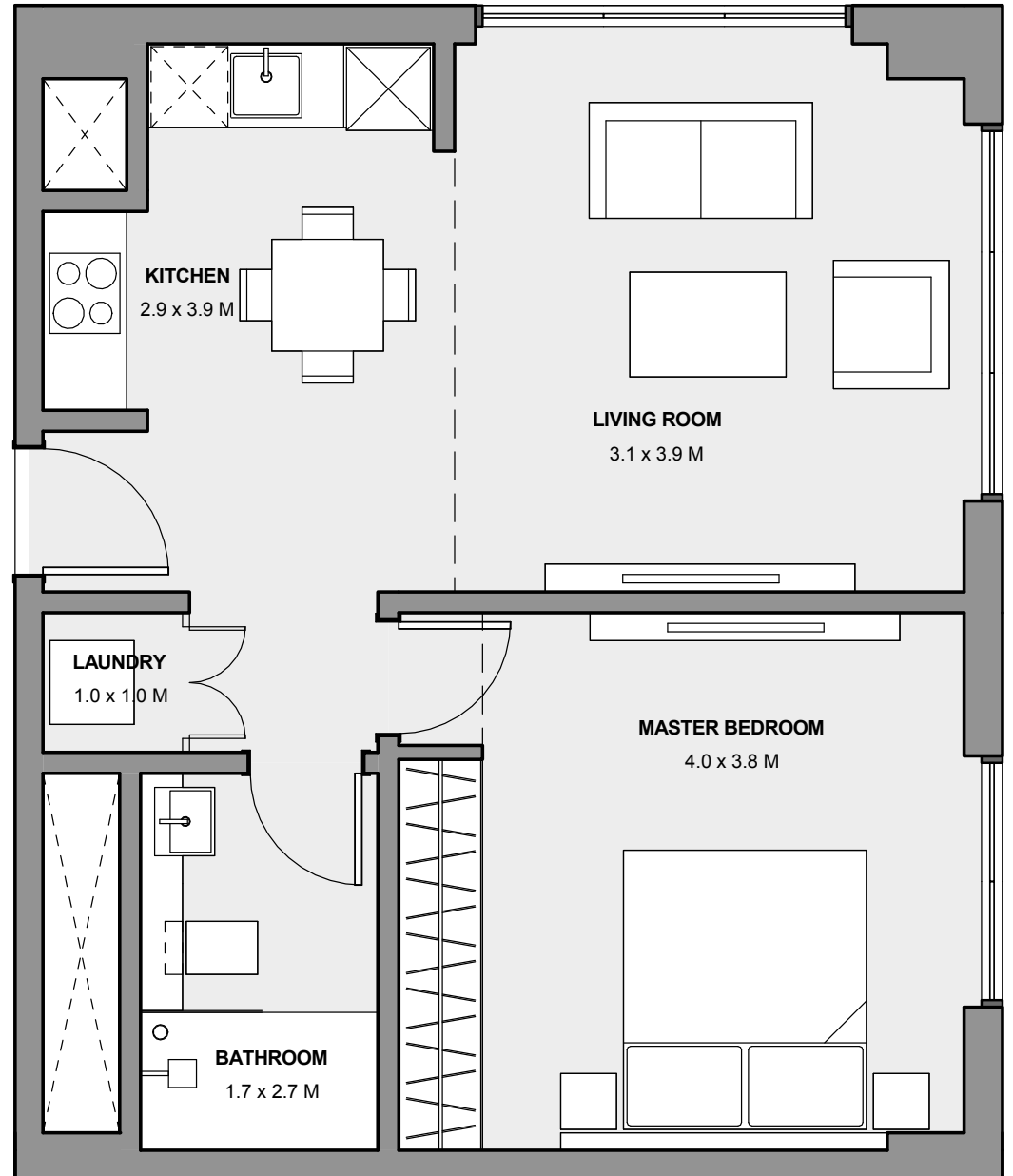


Disclaimer: 1. All room dimensions are measured to structural elements and exclude all finishes and construction tolerances. 2. All dimensions have been provided by our consultant architects. 3. All materials, dimensions and drawings are approximate. Information is subject to change without notice. 4. The attached plans are for marketing purposes only. Actual suite area may vary from the stated area. Drawings not to scale. The developer reserves the right to make revisions. 5. The suite area is measured as the area bounded by the centrelines of demising of party walls separating one unit from another unit, the centreline surface of the exterior walls, and the centreline surface of the corridor wall enclosing and abutting the Unit. 6. The balcony area is measured as the area bounded by the inner face of a solid masonry demising or party walls separating one unit from another unit, the centreline of the enclosing guard and the centreline of the suite abutting the balcony. Where a balcony is split to service two adjacent units and the split is constructed using a glazed panel, the balcony area of each unit is measured to the centreline of the glazed panel. 7. The units are measured at typical floor in the building. Columns may vary in size depending on the floor level. 8. The attached plans are for marketing purposes.

# MARASSI BOULEVARD

## ONE BEDROOM TYPE 10

SUITE AREA	52.6 sqm
BALCONY AREA	0.00 sqm
TOTAL AREA	52.6 sqm

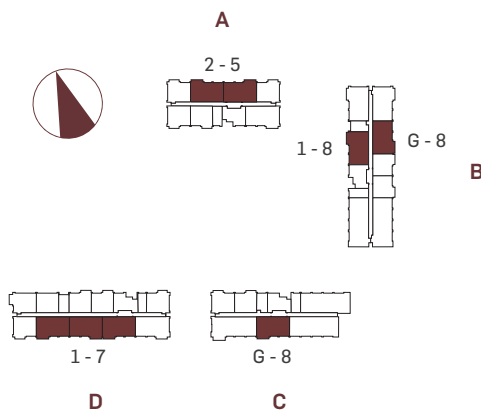
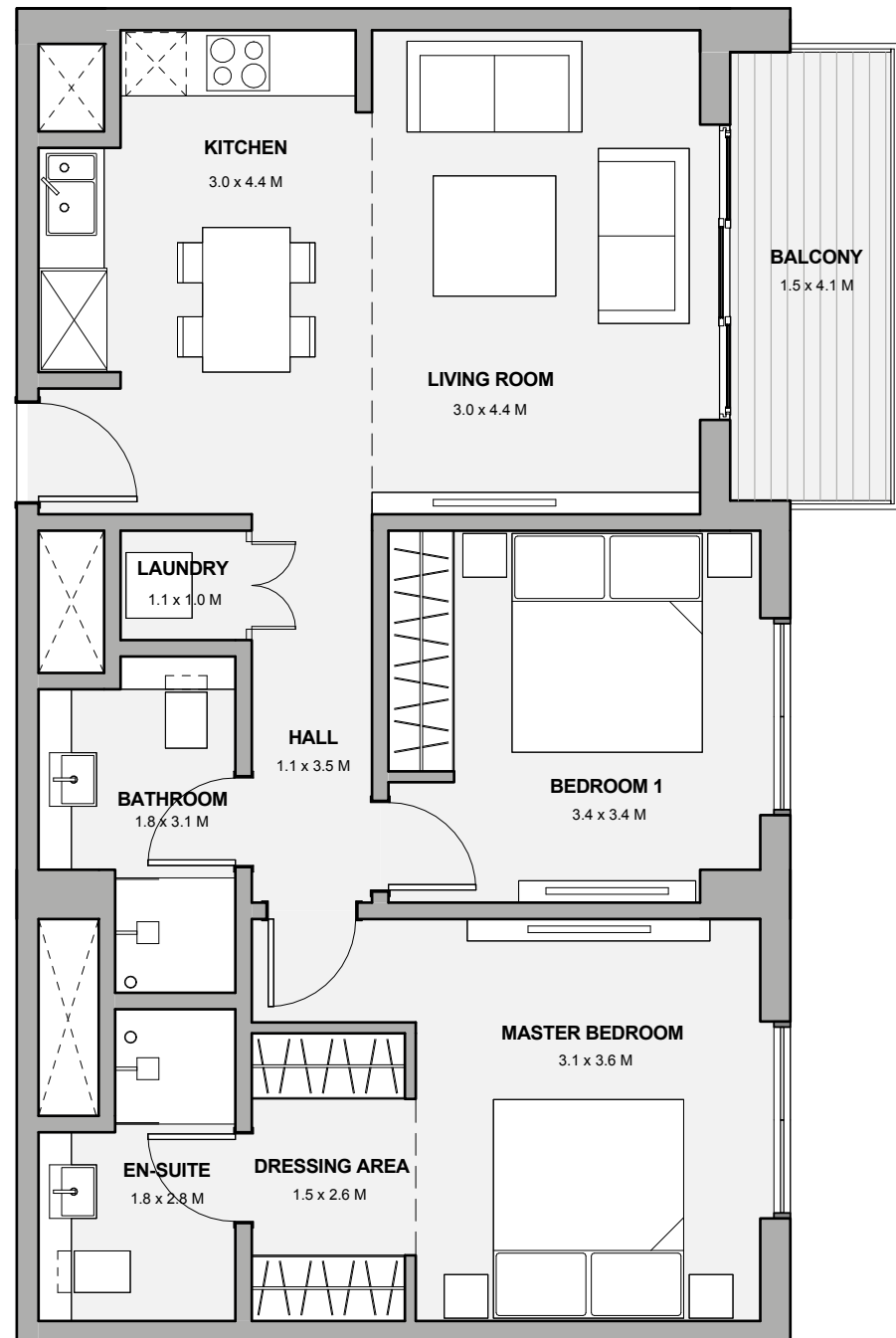


Disclaimer: 1. All room dimensions are measured to structural elements and exclude all finishes and construction tolerances. 2. All dimensions have been provided by our consultant architects. 3. All materials, dimensions and drawings are approximate. Information is subject to change without notice. 4. The attached plans are for marketing purposes only. Actual suite area may vary from the stated area. Drawings not to scale. The developer reserves the right to make revisions. 5. The suite area is measured as the area bounded by the centrelines of demising of party walls separating one unit from another unit, the centreline surface of the exterior walls, and the centreline surface of the corridor wall enclosing and abutting the Unit. 6. The balcony area is measured as the area bounded by the inner face of a solid masonry demising or party walls separating one unit from another unit, the centreline of the enclosing guard and the centreline of the suite abutting the balcony. Where a balcony is split to service two adjacent units and the split is constructed using a glazed panel, the balcony area of each unit is measured to the centreline of the glazed panel. 7. The units are measured at typical floor in the building. Columns may vary in size depending on the floor level. 8. The attached plans are for marketing purposes.

# MARASSI BOULEVARD

## TWO BEDROOM TYPE 01

SUITE AREA	76.8 sqm
BALCONY AREA	6.2 sqm
TOTAL AREA	83.0 sqm



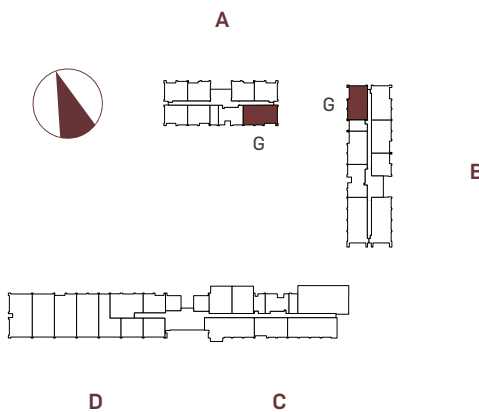
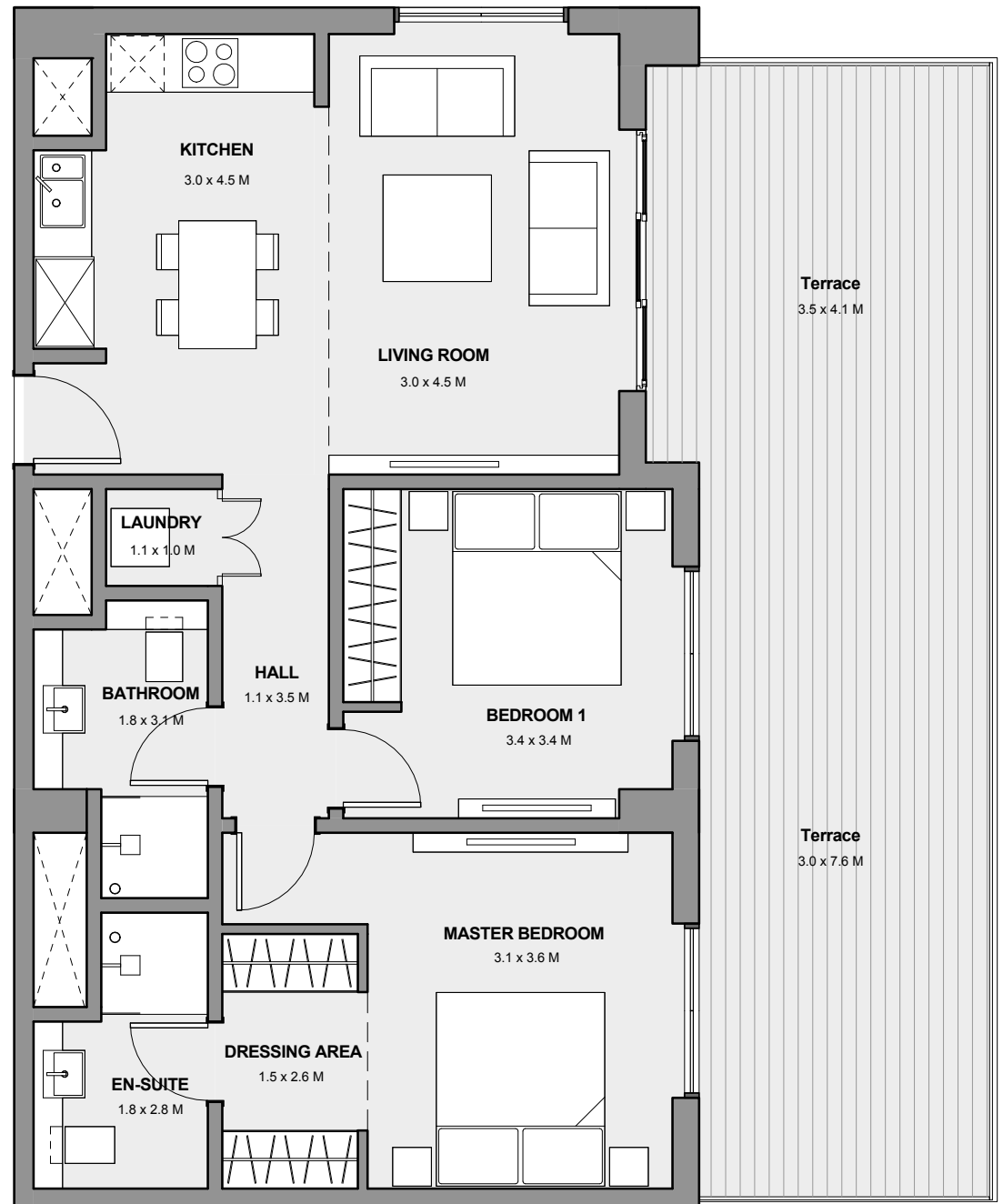
Disclaimer: 1. All room dimensions are measured to structural elements and exclude all finishes and construction tolerances. 2. All dimensions have been provided by our consultant architects. 3. All materials, dimensions and drawings are approximate. Information is subject to change without notice. 4. The attached plans are for marketing purposes only. Actual suite area may vary from the stated area. Drawings not to scale. The developer reserves the right to make revisions. 5. The suite area is measured as the area bounded by the centrelines of demising of party walls separating one unit from another unit, the centreline surface of the exterior walls, and the centreline surface of the corridor wall enclosing and abutting the Unit. 6. The balcony area is measured as the area bounded by the inner face of a solid masonry demising or party walls separating one unit from another unit, the centreline of the enclosing guard and the centreline of the suite abutting the balcony. Where a balcony is split to service two adjacent units and the split is constructed using a glazed panel, the balcony area of each unit is measured to the centreline of the glazed panel. 7. The units are measured at typical floor in the building. Columns may vary in size depending on the floor level. 8. The attached plans are for marketing purposes.



# MARASSI BOULEVARD

## TWO BEDROOM TYPE 02

SUITE AREA	78.1 sqm
BALCONY AREA	36.6 sqm
TOTAL AREA	114.7 sqm

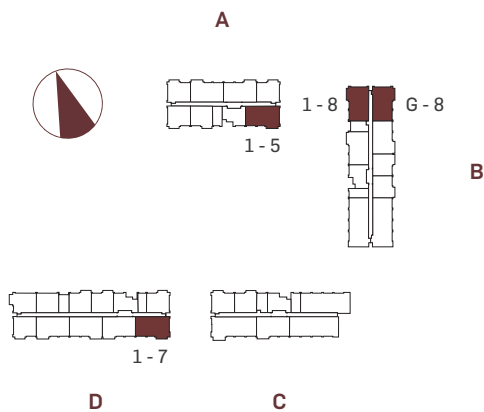
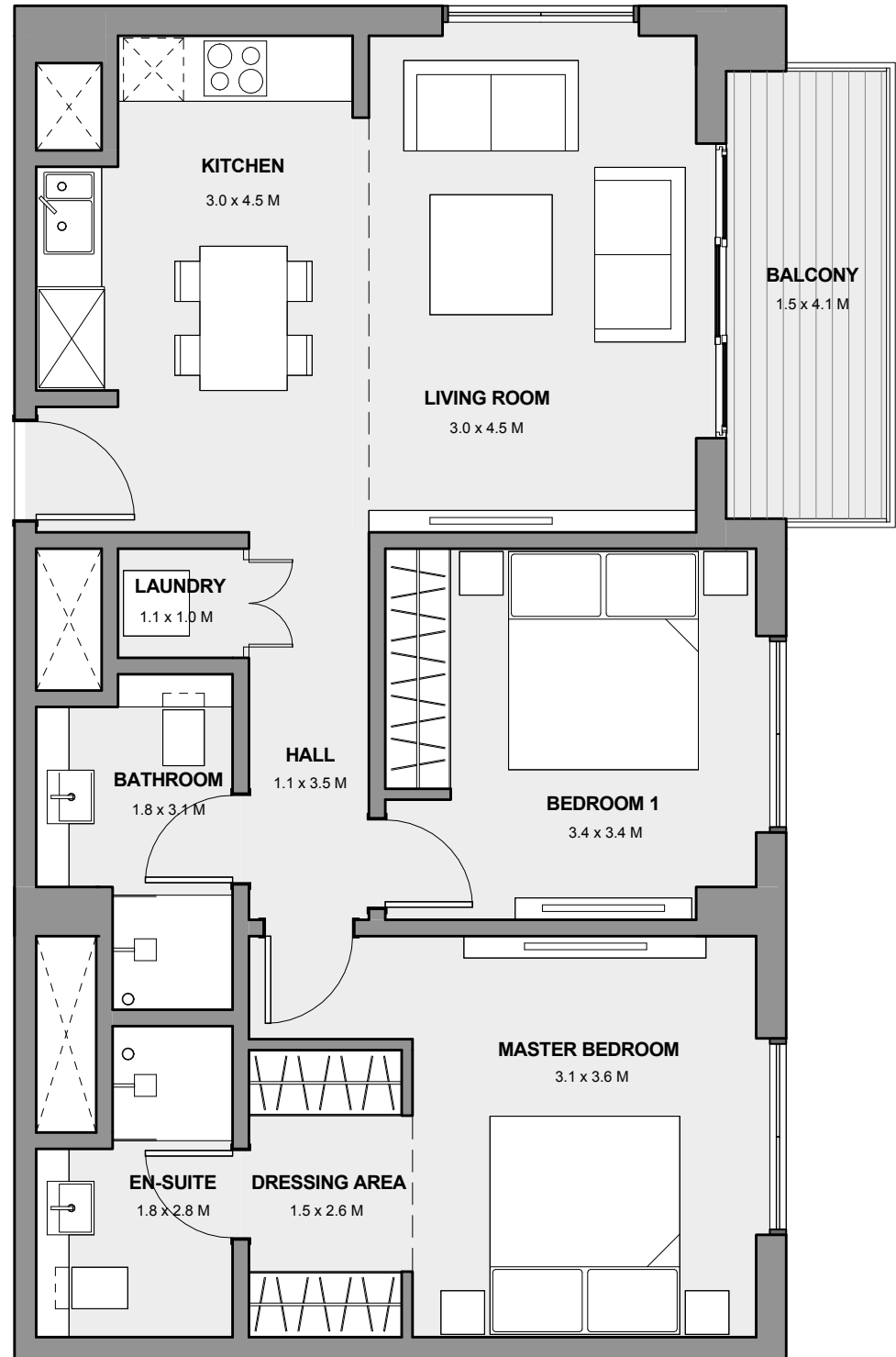


Disclaimer: 1. All room dimensions are measured to structural elements and exclude all finishes and construction tolerances. 2. All dimensions have been provided by our consultant architects. 3. All materials, dimensions and drawings are approximate. Information is subject to change without notice. 4. The attached plans are for marketing purposes only. Actual suite area may vary from the stated area. Drawings not to scale. The developer reserves the right to make revisions. 5. The suite area is measured as the area bounded by the centrelines of demising of party walls separating one unit from another unit, the centreline surface of the exterior walls, and the centreline surface of the corridor wall enclosing and abutting the Unit. 6. The balcony area is measured as the area bounded by the inner face of a solid masonry demising or party walls separating one unit from another unit, the centreline of the enclosing guard and the centreline of the suite abutting the balcony. Where a balcony is split to service two adjacent units and the split is constructed using a glazed panel, the balcony area of each unit is measured to the centreline of the glazed panel. 7. The units are measured at typical floor in the building. Columns may vary in size depending on the floor level. 8. The attached plans are for marketing purposes.

# MARASSI BOULEVARD

## TWO BEDROOM TYPE 03

SUITE AREA	78.0 sqm
BALCONY AREA	6.1 sqm
TOTAL AREA	84.1 sqm

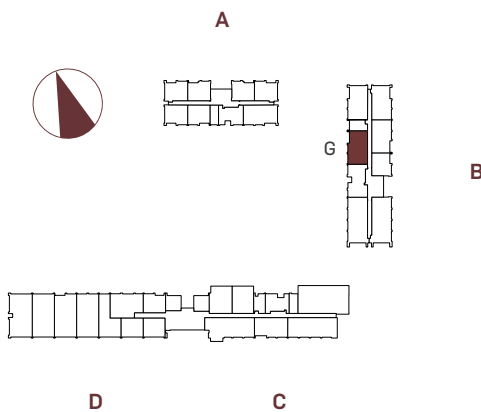
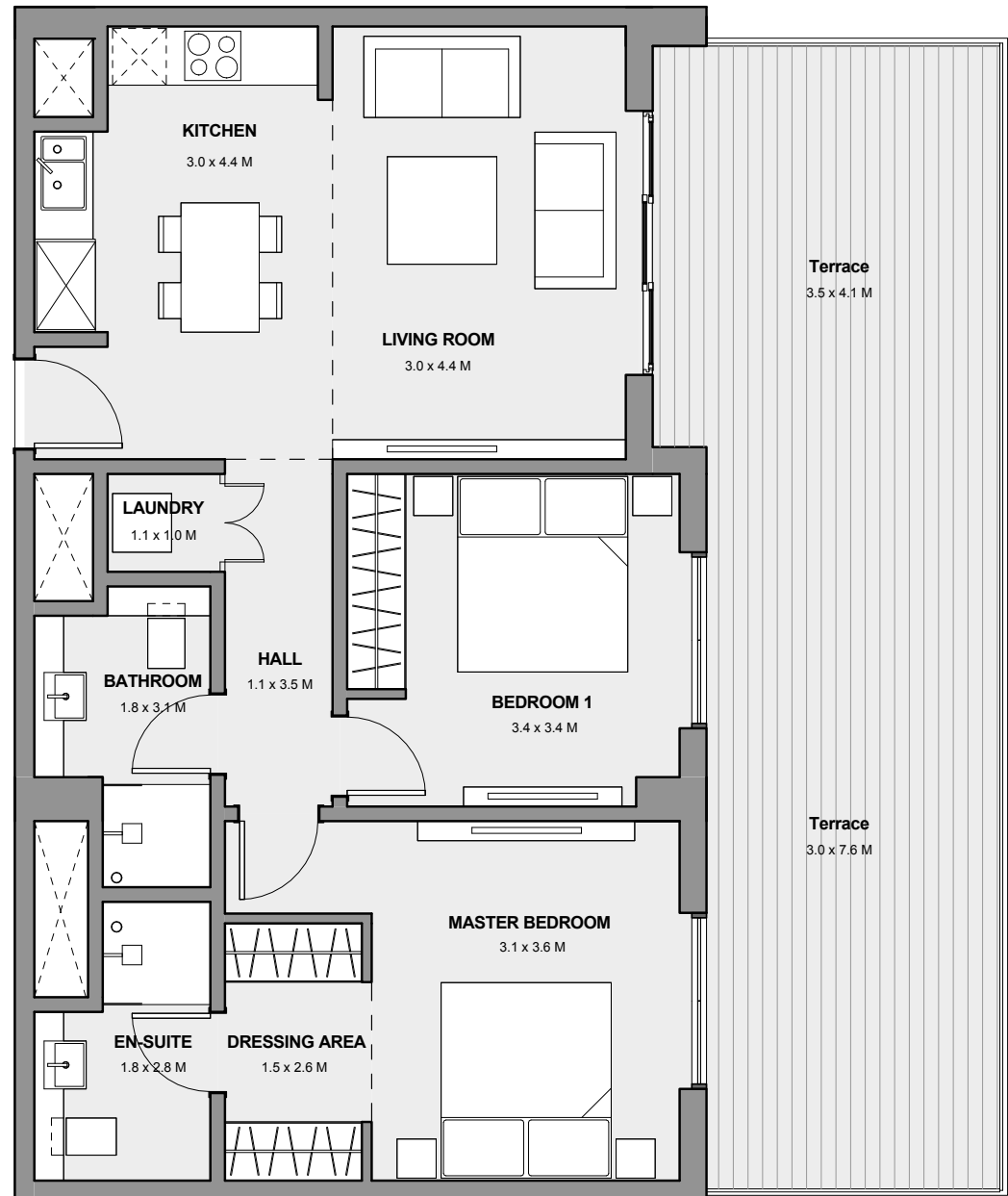


Disclaimer: 1. All room dimensions are measured to structural elements and exclude all finishes and construction tolerances. 2. All dimensions have been provided by our consultant architects. 3. All materials, dimensions and drawings are approximate. Information is subject to change without notice. 4. The attached plans are for marketing purposes only. Actual suite area may vary from the stated area. Drawings not to scale. The developer reserves the right to make revisions. 5. The suite area is measured as the area bounded by the centrelines of demising of party walls separating one unit from another unit, the centreline surface of the exterior walls, and the centreline surface of the corridor wall enclosing and abutting the Unit. 6. The balcony area is measured as the area bounded by the inner face of a solid masonry demising or party walls separating one unit from another unit, the centreline of the enclosing guard and the centreline of the suite abutting the balcony. Where a balcony is split to service two adjacent units and the split is constructed using a glazed panel, the balcony area of each unit is measured to the centreline of the glazed panel. 7. The units are measured at typical floor in the building. Columns may vary in size depending on the floor level. 8. The attached plans are for marketing purposes.

# MARASSI BOULEVARD

## TWO BEDROOM TYPE 04

SUITE AREA	77.0 sqm
BALCONY AREA	37.0 sqm
TOTAL AREA	114.0 sqm

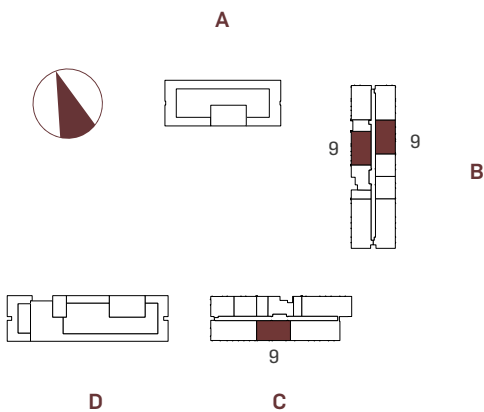
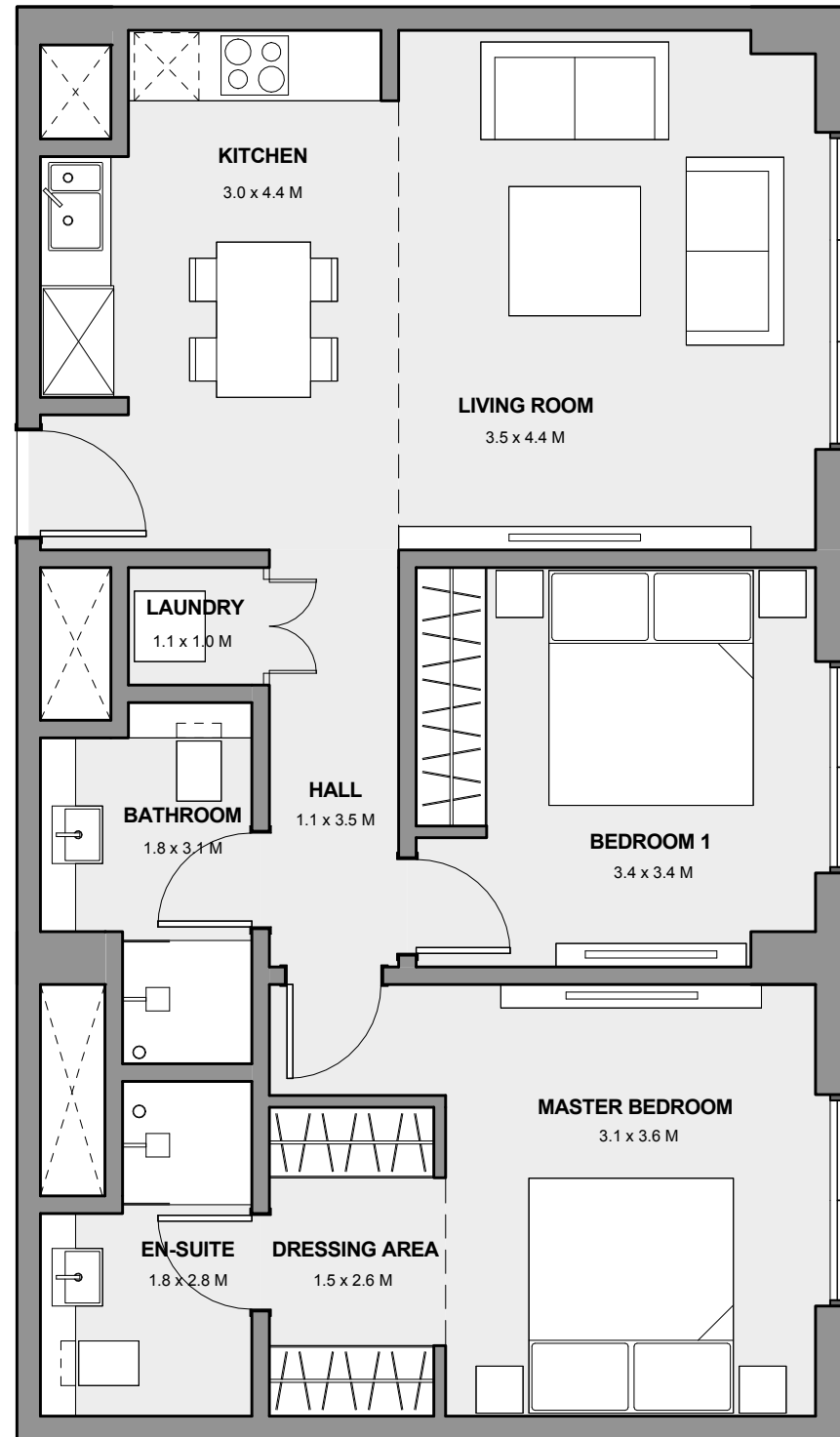


Disclaimer: 1. All room dimensions are measured to structural elements and exclude all finishes and construction tolerances. 2. All dimensions have been provided by our consultant architects. 3. All materials, dimensions and drawings are approximate. Information is subject to change without notice. 4. The attached plans are for marketing purposes only. Actual suite area may vary from the stated area. Drawings not to scale. The developer reserves the right to make revisions. 5. The suite area is measured as the area bounded by the centrelines of demising of party walls separating one unit from another unit, the centreline surface of the exterior walls, and the centreline surface of the corridor wall enclosing and abutting the Unit. 6. The balcony area is measured as the area bounded by the inner face of a solid masonry demising or party walls separating one unit from another unit, the centreline of the enclosing guard and the centreline of the suite abutting the balcony. Where a balcony is split to service two adjacent units and the split is constructed using a glazed panel, the balcony area of each unit is measured to the centreline of the glazed panel. 7. The units are measured at typical floor in the building. Columns may vary in size depending on the floor level. 8. The attached plans are for marketing purposes.

# MARASSI BOULEVARD

## TWO BEDROOM TYPE 09

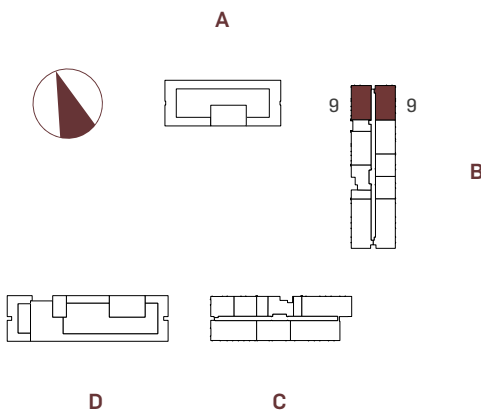
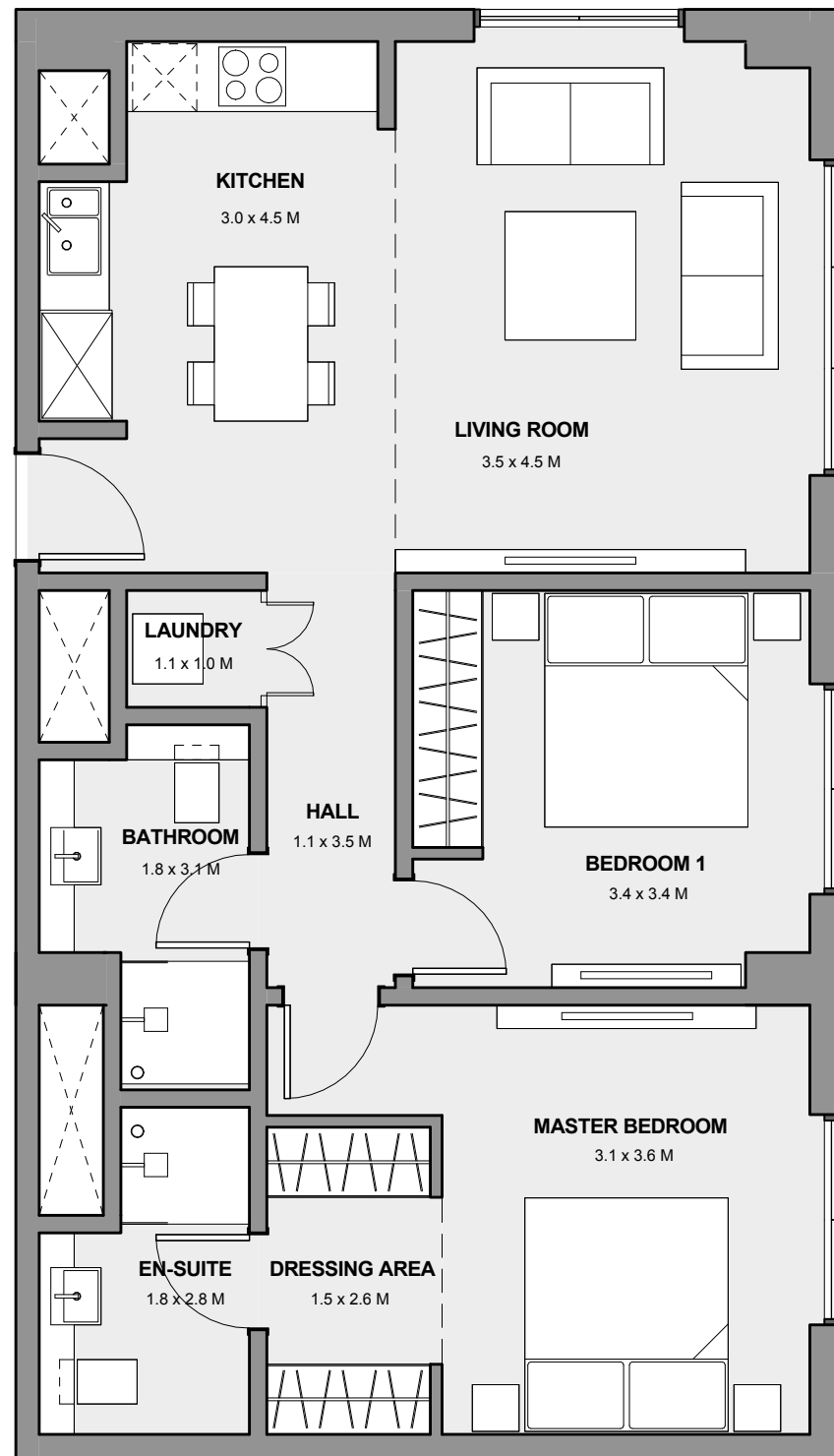
SUITE AREA	79.1 sqm
BALCONY AREA	0.0 sqm
TOTAL AREA	79.1 sqm



# MARASSI BOULEVARD

## TWO BEDROOM TYPE 10

SUITE AREA	80.5 sqm
BALCONY AREA	0.0 sqm
TOTAL AREA	80.5 sqm

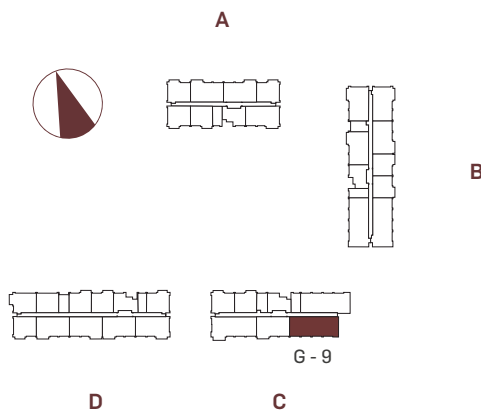
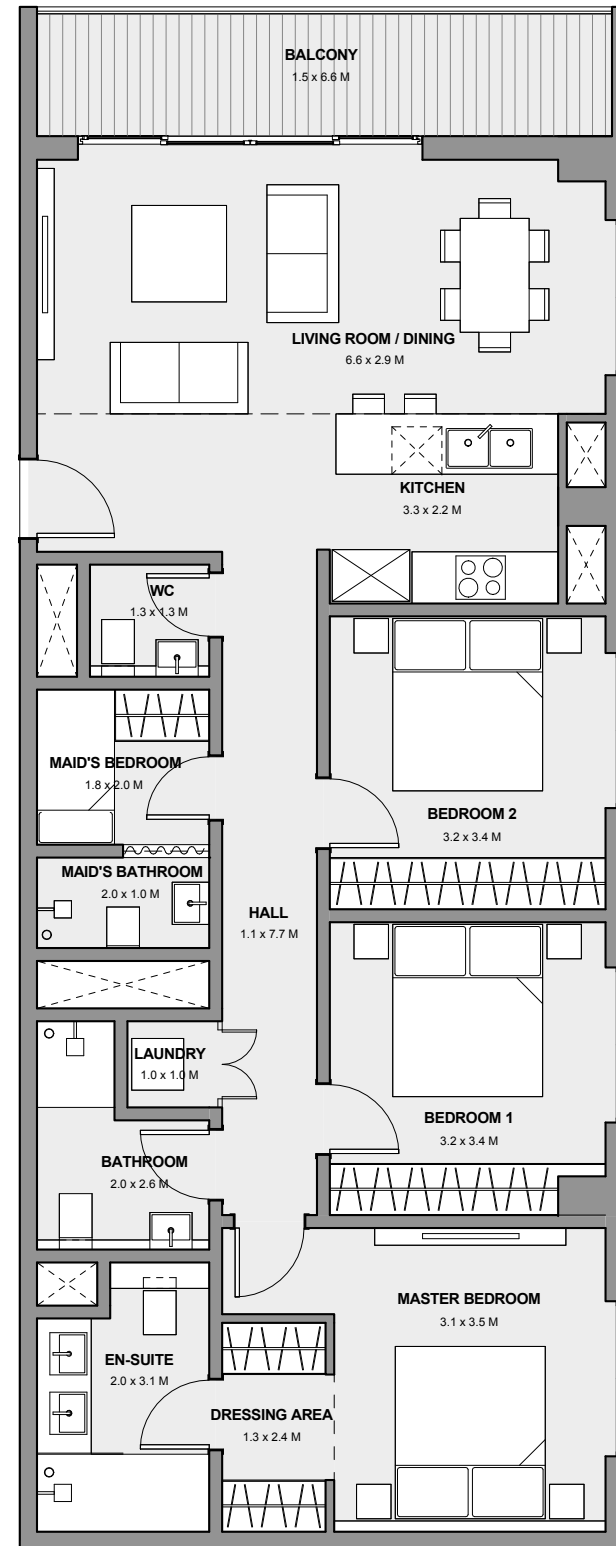


Disclaimer: 1. All room dimensions are measured to structural elements and exclude all finishes and construction tolerances. 2. All dimensions have been provided by our consultant architects. 3. All materials, dimensions and drawings are approximate. Information is subject to change without notice. 4. The attached plans are for marketing purposes only. Actual suite area may vary from the stated area. Drawings not to scale. The developer reserves the right to make revisions. 5. The suite area is measured as the area bounded by the centrelines of demising of party walls separating one unit from another unit, the centreline surface of the exterior walls, and the centreline surface of the corridor wall enclosing and abutting the Unit. 6. The balcony area is measured as the area bounded by the inner face of a solid masonry demising or party walls separating one unit from another unit, the centreline of the enclosing guard and the centreline of the suite abutting the balcony. Where a balcony is split to service two adjacent units and the split is constructed using a glazed panel, the balcony area of each unit is measured to the centreline of the glazed panel. 7. The units are measured at typical floor in the building. Columns may vary in size depending on the floor level. 8. The attached plans are for marketing purposes.

# MARASSI BOULEVARD

## THREE BEDROOM TYPE 01

SUITE AREA	106.5 sqm
BALCONY AREA	9.4 sqm
TOTAL AREA	115.9 sqm

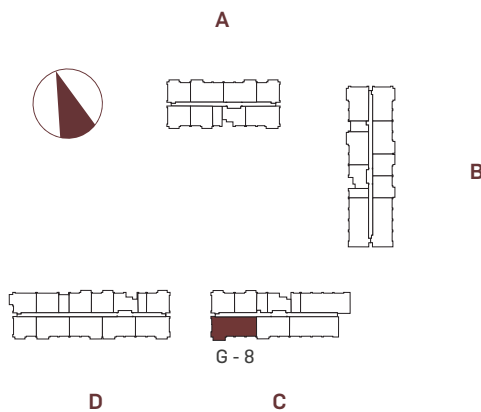
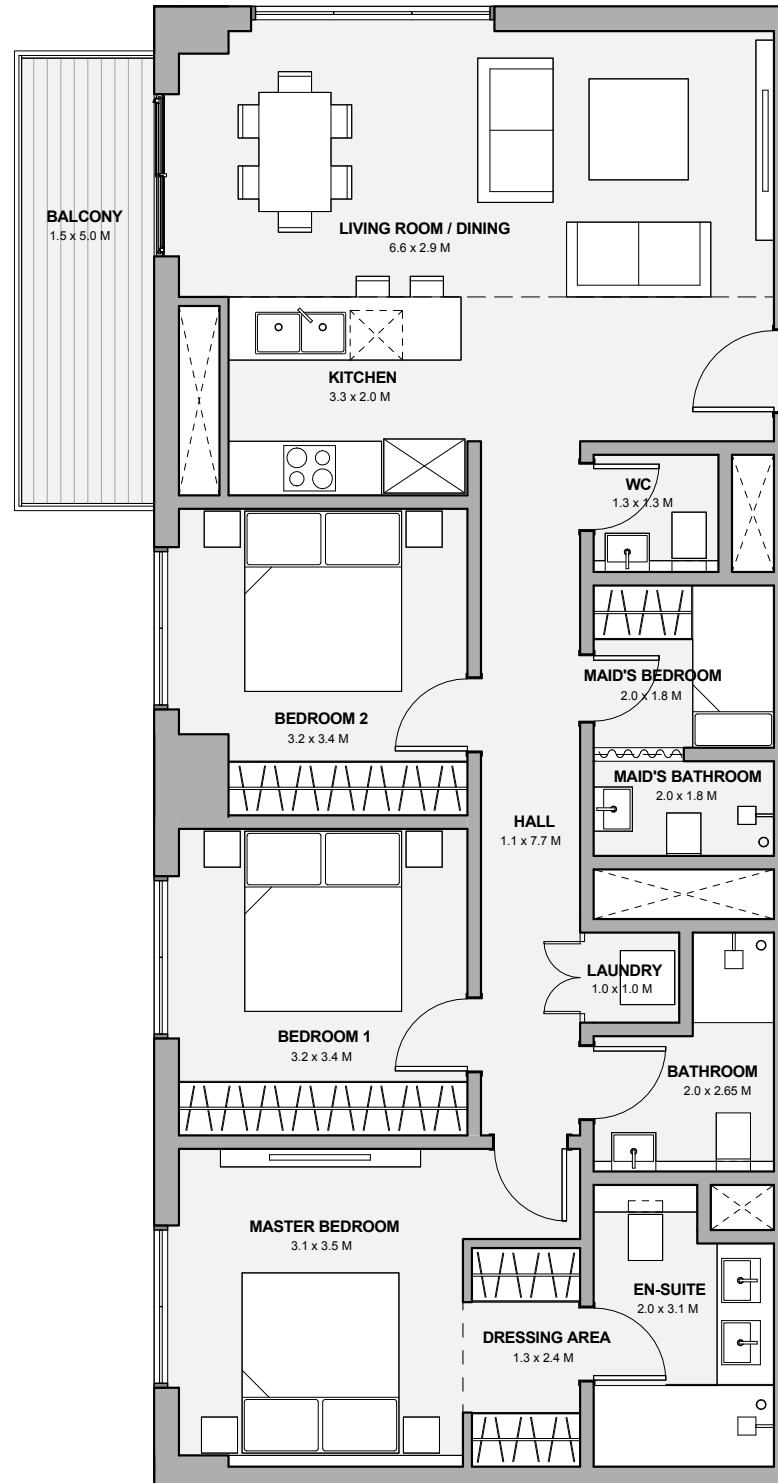


Disclaimer: 1. All room dimensions are measured to structural elements and exclude all finishes and construction tolerances. 2. All dimensions have been provided by our consultant architects. 3. All materials, dimensions and drawings are approximate. Information is subject to change without notice. 4. The attached plans are for marketing purposes only. Actual suite area may vary from the stated area. Drawings not to scale. The developer reserves the right to make revisions. 5. The suite area is measured as the area bounded by the centerlines of demising of party walls separating one unit from another unit, the centerline surface of the exterior walls, and the centerline surface of the corridor wall enclosing and abutting the Unit. 6. The balcony area is measured as the area bounded by the inner face of a solid masonry demising or party walls separating one unit from another unit, the centerline of the enclosing guard and the centerline of the suite abutting the balcony. Where a balcony is split to service two adjacent units and the split is constructed using a glazed panel, the balcony area of each unit is measured to the centerline of the glazed panel. 7. The units are measured at typical floor in the building. Columns may vary in size depending on the floor level. 8. The attached plans are for marketing purposes.

# MARASSI BOULEVARD

## THREE BEDROOM TYPE 02

SUITE AREA	106.6 sqm
BALCONY AREA	6.4 sqm
TOTAL AREA	113.0 sqm

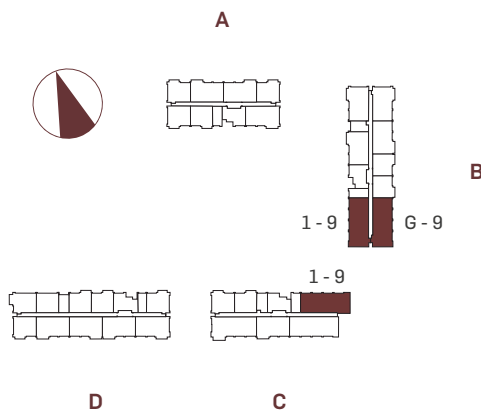
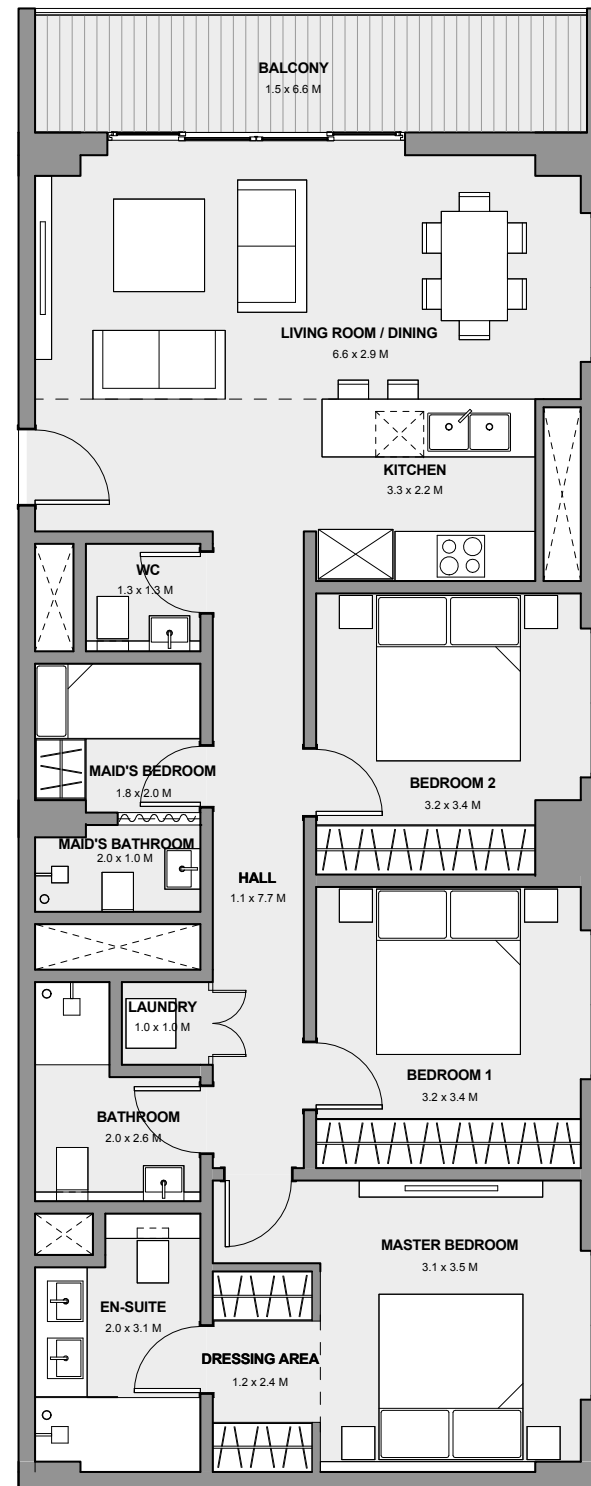


Disclaimer: 1. All room dimensions are measured to structural elements and exclude all finishes and construction tolerances. 2. All dimensions have been provided by our consultant architects. 3. All materials, dimensions and drawings are approximate. Information is subject to change without notice. 4. The attached plans are for marketing purposes only. Actual suite area may vary from the stated area. Drawings not to scale. The developer reserves the right to make revisions. 5. The suite area is measured as the area bounded by the centerlines of demising of party walls separating one unit from another unit, the centerline surface of the exterior walls, and the centerline surface of the corridor wall enclosing and abutting the Unit. 6. The balcony area is measured as the area bounded by the inner face of a solid masonry demising or party walls separating one unit from another unit, the centerline of the enclosing guard and the centerline of the suite abutting the balcony. Where a balcony is split to service two adjacent units and the split is constructed using a glazed panel, the balcony area of each unit is measured to the centerline of the glazed panel. 7. The units are measured at typical floor in the building. Columns may vary in size depending on the floor level. 8. The attached plans are for marketing purposes.

# MARASSI BOULEVARD

## THREE BEDROOM TYPE 03

SUITE AREA	107.5 sqm
BALCONY AREA	9.6 sqm
TOTAL AREA	117.1 sqm

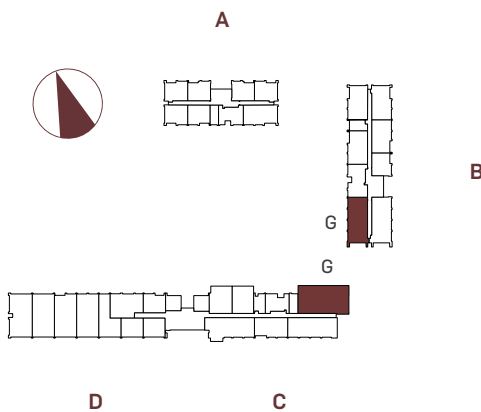
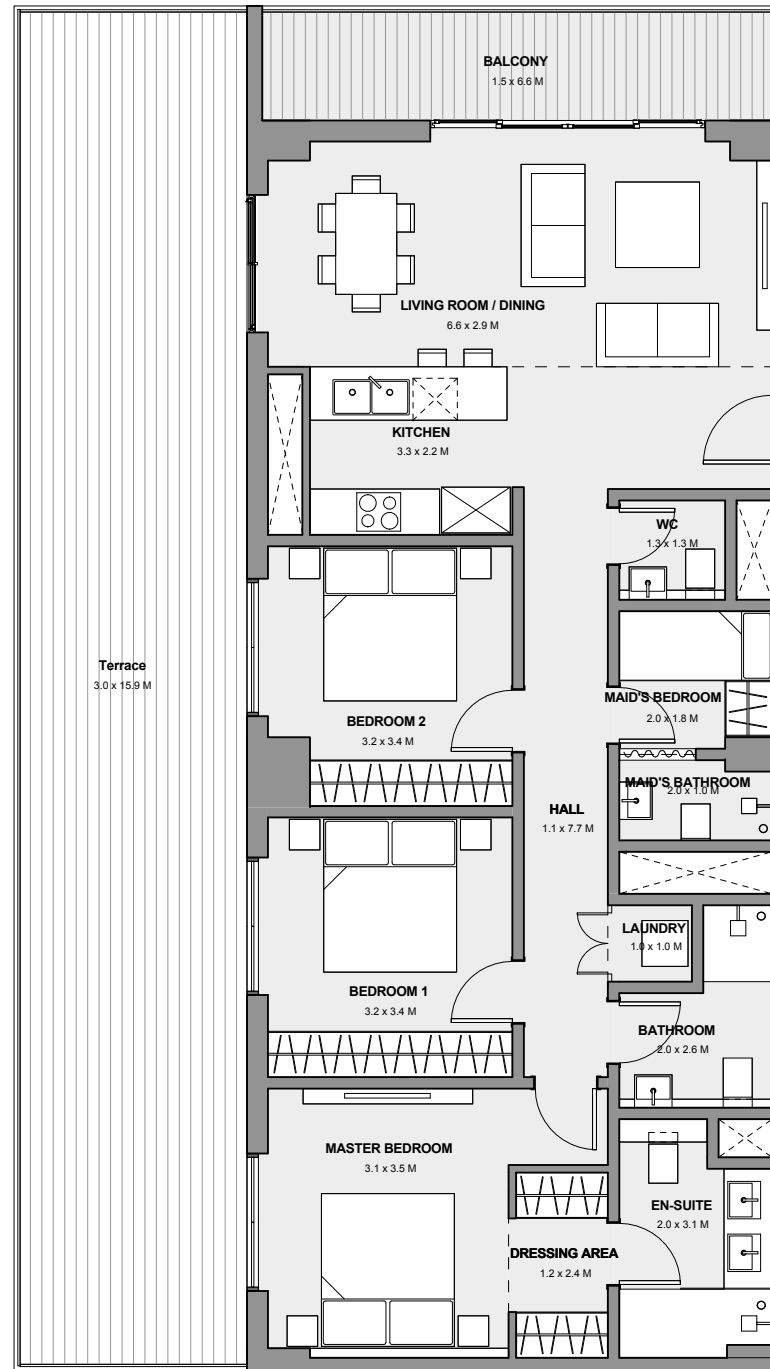


Disclaimer: 1. All room dimensions are measured to structural elements and exclude all finishes and construction tolerances. 2. All dimensions have been provided by our consultant architects. 3. All materials, dimensions and drawings are approximate. Information is subject to change without notice. 4. The attached plans are for marketing purposes only. Actual suite area may vary from the stated area. Drawings not to scale. The developer reserves the right to make revisions. 5. The suite area is measured as the area bounded by the centerlines of demising of party walls separating one unit from another unit, the centerline surface of the exterior walls, and the centerline surface of the corridor wall enclosing and abutting the Unit. 6. The balcony area is measured as the area bounded by the inner face of a solid masonry demising or party walls separating one unit from another unit, the centerline of the enclosing guard and the centerline of the suite abutting the balcony. Where a balcony is split to service two adjacent units and the split is constructed using a glazed panel, the balcony area of each unit is measured to the centerline of the glazed panel. 7. The units are measured at typical floor in the building. Columns may vary in size depending on the floor level. 8. The attached plans are for marketing purposes.



## THREE BEDROOM TYPE 05

SUITE AREA	107.7 sqm
BALCONY AREA	60.6 sqm
TOTAL AREA	168.3 sqm

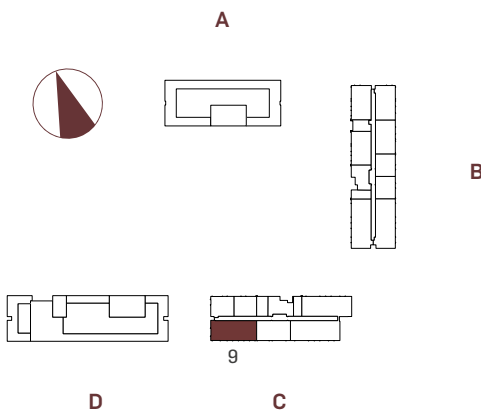
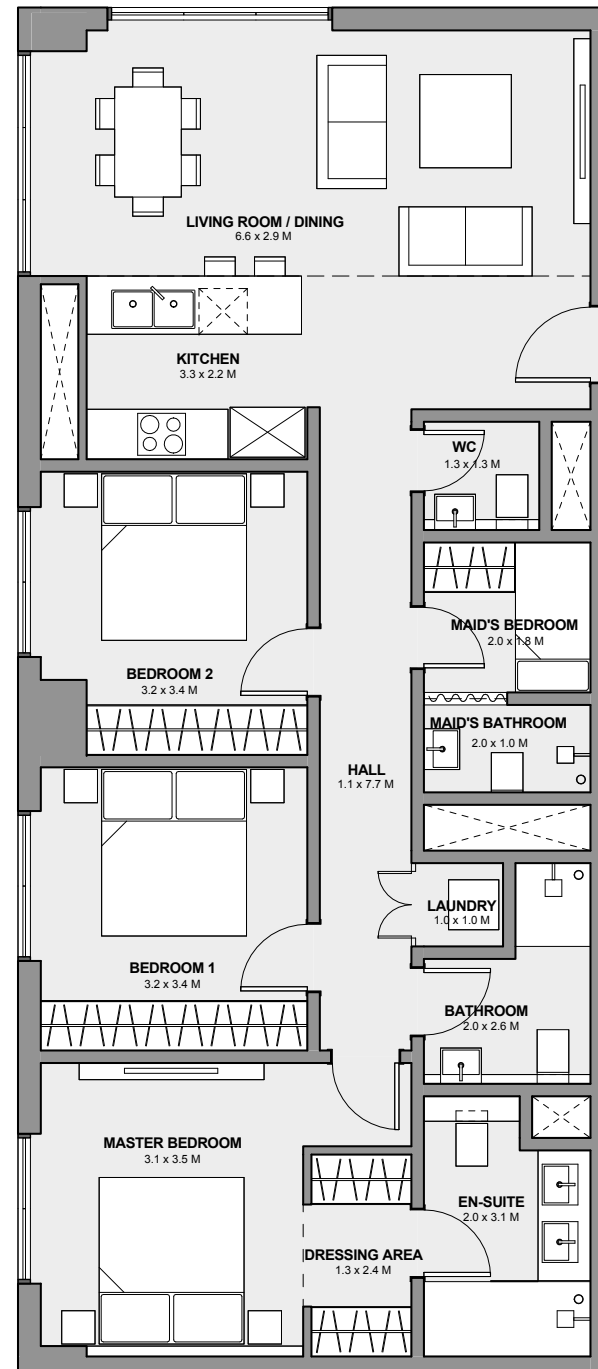


Disclaimer: 1. All room dimensions are measured to structural elements and exclude all finishes and construction tolerances. 2. All dimensions have been provided by our consultant architects. 3. All materials, dimensions and drawings are approximate. Information is subject to change without notice. 4. The attached plans are for marketing purposes only. Actual suite area may vary from the stated area. Drawings not to scale. The developer reserves the right to make revisions. 5. The suite area is measured as the area bounded by the centrelines of demising of party walls separating one unit from another unit, the centreline surface of the exterior walls, and the centreline surface of the corridor wall enclosing and abutting the Unit. 6. The balcony area is measured as the area bounded by the inner face of a solid masonry demising or party walls separating one unit from another unit, the centreline of the enclosing guard and the centreline of the suite abutting the balcony. Where a balcony is split to service two adjacent units and the split is constructed using a glazed panel, the balcony area of each unit is measured to the centreline of the glazed panel. 7. The units are measured at typical floor in the building. Columns may vary in size depending on the floor level. 8. The attached plans are for marketing purposes.

# MARASSI BOULEVARD

## THREE BEDROOM TYPE 06

SUITE AREA	106.5 sqm
BALCONY AREA	0.0 sqm
TOTAL AREA	106.5 sqm

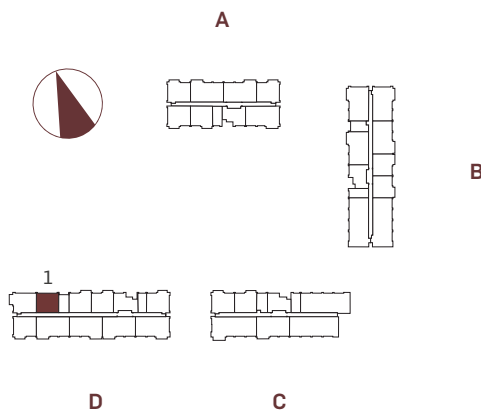
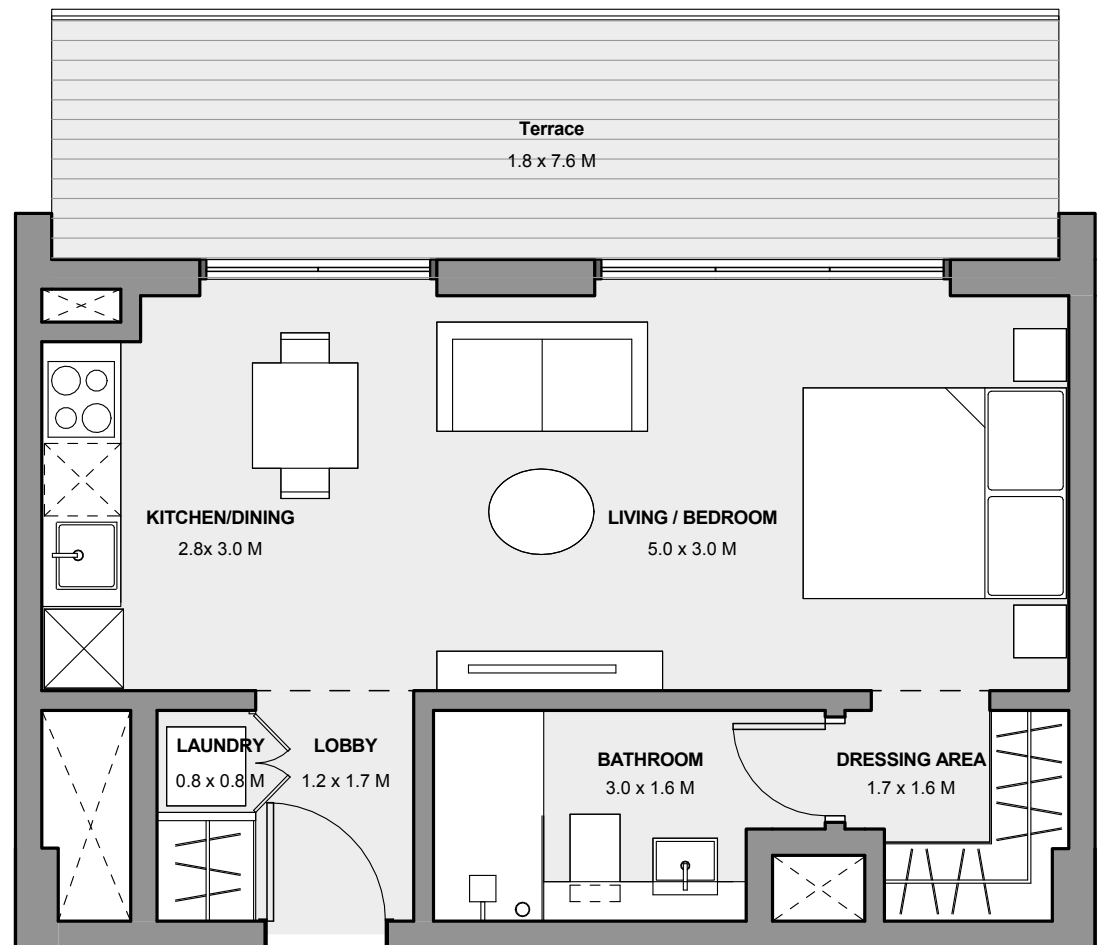


Disclaimer: 1. All room dimensions are measured to structural elements and exclude all finishes and construction tolerances. 2. All dimensions have been provided by our consultant architects. 3. All materials, dimensions and drawings are approximate. Information is subject to change without notice. 4. The attached plans are for marketing purposes only. Actual suite area may vary from the stated area. Drawings not to scale. The developer reserves the right to make revisions. 5. The suite area is measured as the area bounded by the centrelines of demising of party walls separating one unit from another unit, the centreline surface of the exterior walls, and the centreline surface of the corridor wall enclosing and abutting the Unit. 6. The balcony area is measured as the area bounded by the inner face of a solid masonry demising or party walls separating one unit from another unit, the centreline of the enclosing guard and the centreline of the suite abutting the balcony. Where a balcony is split to service two adjacent units and the split is constructed using a glazed panel, the balcony area of each unit is measured to the centreline of the glazed panel. 7. The units are measured at typical floor in the building. Columns may vary in size depending on the floor level. 8. The attached plans are for marketing purposes.

# MARASSI BOULEVARD

## STUDIO TYPE 01

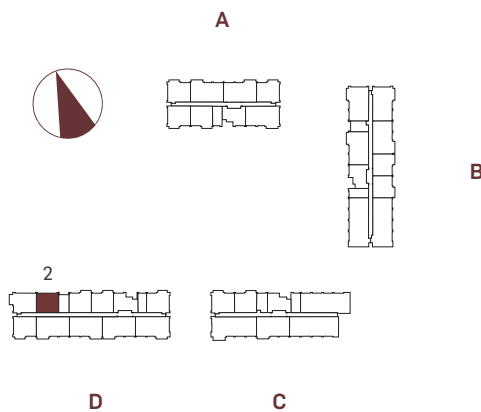
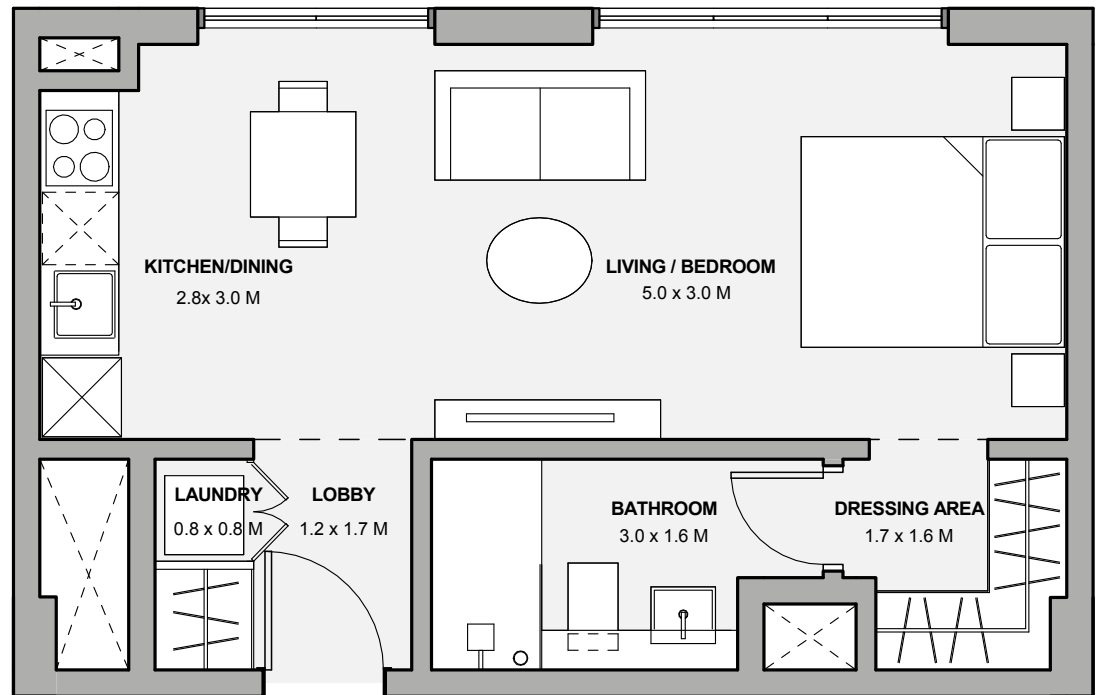
SUITE AREA	38.0 sqm
BALCONY AREA	14.8 sqm
TOTAL AREA	52.8 sqm



# MARASSI BOULEVARD

## STUDIO TYPE 02

SUITE AREA	38.0 sqm
BALCONY AREA	0.0 sqm
TOTAL AREA	38.0 sqm



Disclaimer: 1. All room dimensions are measured to structural elements and exclude all finishes and construction tolerances. 2. All dimensions have been provided by our consultant architects. 3. All materials, dimensions and drawings are approximate. Information is subject to change without notice. 4. The attached plans are for marketing purposes only. Actual suite area may vary from the stated area. Drawings not to scale. The developer reserves the right to make revisions. 5. The suite area is measured as the area bounded by the centrelines of demising of party walls separating one unit from another unit, the centreline surface of the exterior walls, and the centreline surface of the corridor wall enclosing and abutting the Unit. 6. The balcony area is measured as the area bounded by the inner face of a solid masonry demising or party walls separating one unit from another unit, the centreline of the enclosing guard and the centreline of the suite abutting the balcony. Where a balcony is split to service two adjacent units and the split is constructed using a glazed panel, the balcony area of each unit is measured to the centreline of the glazed panel. 7. The units are measured at typical floor in the building. Columns may vary in size depending on the floor level. 8. The attached plans are for marketing purposes.